

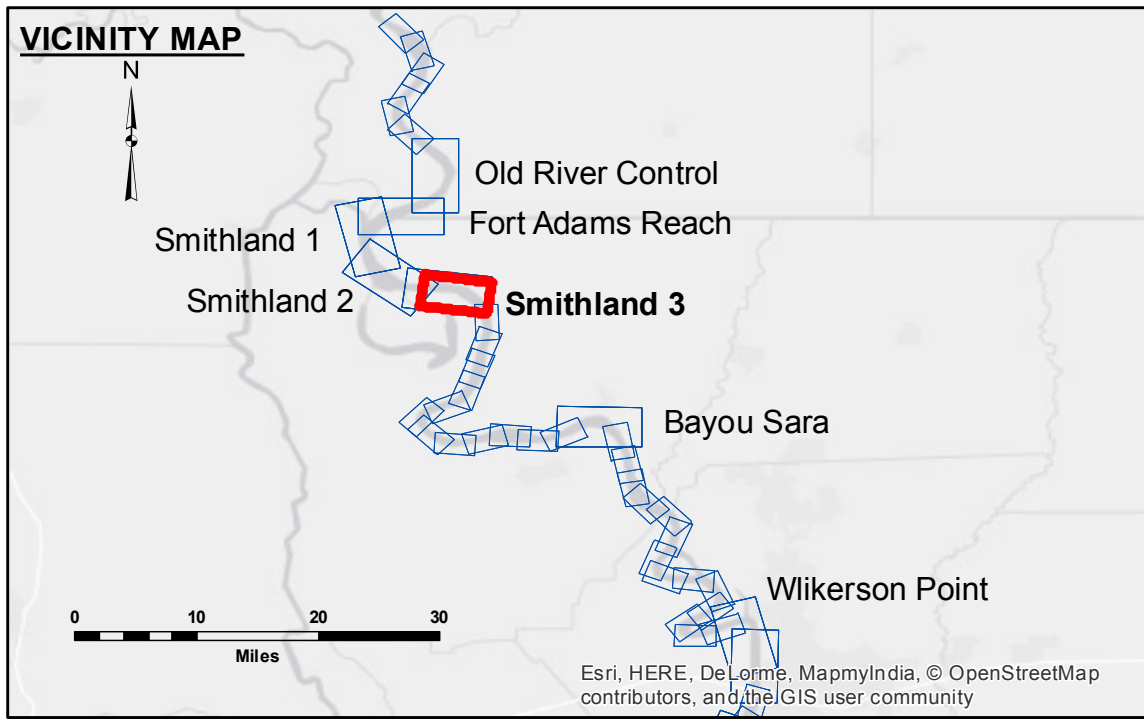
**Access/Availability:** The United States Government furnishes these data and the recipient accepts and uses them with the express understanding that the data are not to be used for any purpose other than that for which they were originally prepared. The user is responsible for the results of any use of the data for other than its intended purpose. The application of the data for other than its intended purpose may be hazardous to the user.

**Distribution Liability:** The data represents the results of data collection for a specific US Army Corps of Engineers project. It is not to be used for any other purpose. The user is responsible for the results of any use of the data for other than its intended purpose. The application of the data for other than its intended purpose may be hazardous to the user.

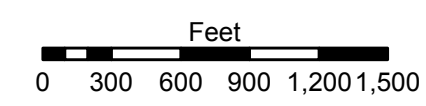
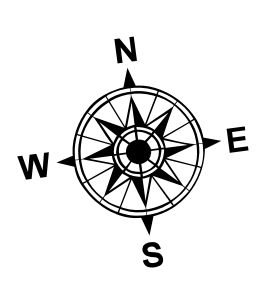
**Data Accuracy:** Hydrographic survey data is subject to change rapidly due to several factors including but not limited to changing hydrographic conditions, changes in the bathymetry of the river, and the hydrographic conditions which develop after the date of the survey. The user is responsible for the results of any use of the data for other than its intended purpose. The application of the data for other than its intended purpose may be hazardous to the user.

U.S. ARMY CORPS OF ENGINEERS NEW ORLEANS DISTRICT	
Submitted:	Surveyed By: PM,UA
Recommended: Chief, Survey Section	Plotted By: BITD
Approved: Chief, Waterways Maintenance Section	Checked By: MSK

**MISSISSIPPI RIVER - SHALLOW DRAFT  
SMITHLAND - SHEET 3  
MS\_11\_SM3\_20151006  
06 October 2015**



LEGEND			
--- Federal Navigation Channel	○ Cable Area	■ Shoaling Area	■ 0' and above
— Federal Navigation Center Line	□ Placement Area	● Shoalest Sounding**	■ 0' to -5'
— As-built Pipeline/Cable	□ Anchorage Area	☆ Beacon, General	■ -5' to -9'
..... Unconfirmed Pipeline/Cable	⊗ Obstruction Point	◆ Red Navigation Buoy	□ -9' and below
— Project Depth Contour	⚓ Wrecks-Submerged	◆ Green Navigation Buoy	



LWRP: 12.6  
 Gage Reading: RR:20.34 BR:7.7 USED:19.1 NGVD  
 Sea Conditions: CALM  
 Vessel Name: OB-167  
 Survey Type: CONDITION  
 Sounding Frequency\*\*\*: HIGH

**NOTES:**  
 Horizontal Coordinate System:  
 North American Datum of 1983 (NAD83), projected to the State Plane Coordinate System (SPCS), Louisiana South Zone. Distance units in U.S. Survey Feet.  
 Vertical Datum:  
 Soundings are shown in feet and indicate depths below Low Water Reference Plane 2007 (NGVD).  
 Distances on the Mississippi River, above and below Head of Passes are shown at 1 mile intervals.  
 The location of navigation aids are based on and provided by the U.S. Coast Guard and USACE crew.  
 2010 Aerial Photography data source: NAIP, USDA-FSA-APFO Aerial Photography Field Office.  
 Reference is USACE IENC U35LM236.  
 \*\*\* Shoalest Sounding per Quarter per Reach.  
 \*\*\* High frequency (200 kHz) survey data represents the first signal return at a sounding location and will include suspended solids, known as "fluff", if present. Low frequency (20 kHz) survey data normally penetrates through this "fluff" layer to depict elevations of consolidated bottom material. Low frequency accuracies may vary depending on channel conditions and bathymeter settings.

**Sheet Reference Number  
11 of 39**