

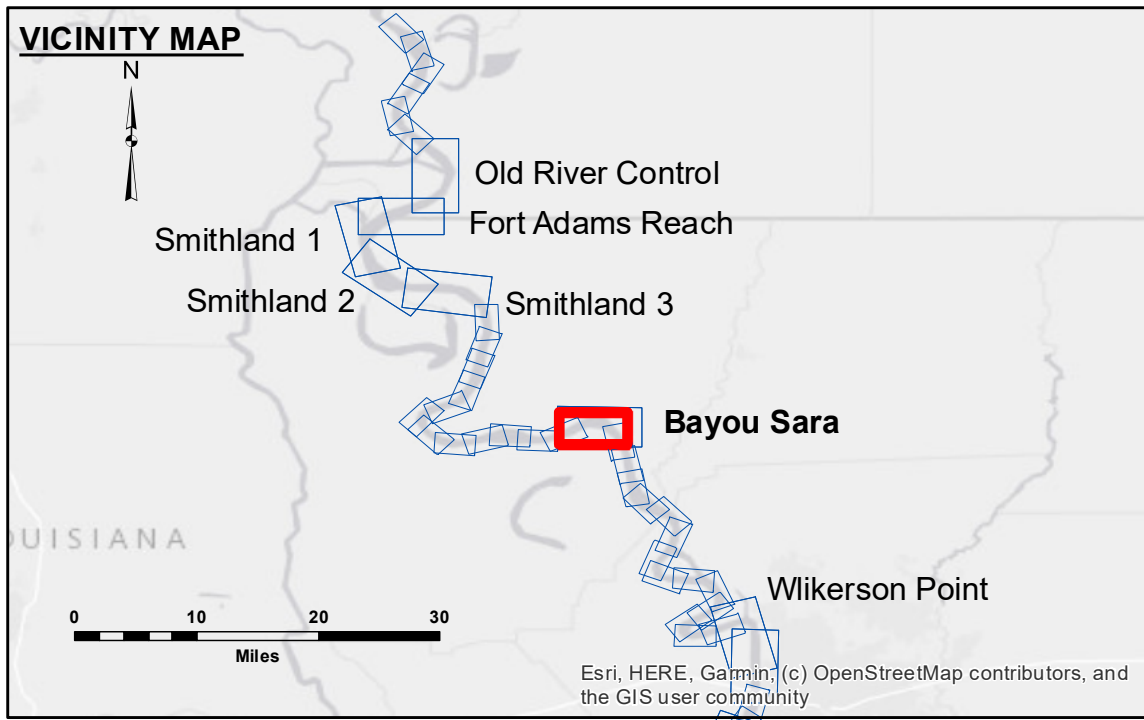
DISCLAIMER: The United States Government furnishes these data and the recipient accepts and uses them with the express understanding that the Government makes no warranty, expressed or implied, concerning the accuracy, completeness, reliability, usability or suitability for any particular purpose of the information. The user is responsible for the results. The application of the data for other than its intended purpose is at the user's risk. Data furnished hereunder is not to be used for any purpose other than that for which it was prepared. The recipient may not transfer these data to others without the written consent of the U.S. Army Corps of Engineers. The information depicted on this map represents the results of a survey conducted on the date of the survey. The information is considered to represent the general condition existing at that time.

U.S. ARMY CORPS OF ENGINEERS NEW ORLEANS DISTRICT	
Submitted: RYLAND/SIMMONS	Surveyed By: RYLAND/SIMMONS
Recommended: Chief, Survey Section	Plotted By: BD
Approved: Chief, Waterways Maintenance Section	Checked By: AC

MISSISSIPPI RIVER - SHALLOW DRAFT
BAYOU SARA
MS_24_BY SX_20221108_CS
08 November 2022

Sheet Reference Number
24 of 39

Revision Number: 4.2-202/044.20



LEGEND	
--- Federal Navigation Channel	○ Cable Area
— Federal Navigation Center Line	□ Placement Area
— As-built Pipeline/Cable	□ Anchorage Area
..... Unconfirmed Pipeline/Cable	⊗ Obstruction Point
— Project Depth Contour	★ Wrecks-Submerged
■ Shoaling Area	☆ Beacon, General
● Shoalest Sounding**	◆ Red Navigation Buoy
■ 0' and above	◆ Green Navigation Buoy
■ 0' to -5'	
■ -5' to -9'	
■ -9' and below	

LWRP: 6.6
Gage Reading: RR:15.0 BR:4.4 USED:10.10 NAVD
Sea Conditions: CALM
Vessel Name: OB-189
Survey Type: CONDITION
Sounding Frequency*:** HIGH

NOTES:
 Horizontal Coordinate System:
 North American Datum of 1983 (NAD83), projected to the State Plane Coordinate System (SPCS), Louisiana South Zone. Distance units in U.S. Survey Feet.
 Vertical Datum:
 Soundings are shown in feet and indicate depths below Low Water Reference Plane 2007 (NAVD).
 Distances on the Mississippi River, above and below Head of Passes are shown at 1 mile intervals.
 The location of navigation aids are based on and provided by the U.S. Coast Guard and USACE crew.
 2015 Aerial Photography data source: NAIP, USDA-FSA-APFO Aerial Photography Field Office.
 Reference is USACE IENC U35LM236.
 *** Shoalest Sounding per Quarter per Reach.
 *** High frequency (200 kHz) survey data represents the first signal return at a sounding location and will include suspended solids, known as "fluff", if present. Low frequency (20 kHz) survey data normally penetrates through this "fluff" layer to depict elevations of consolidated bottom material. Low frequency accuracies may vary depending on channel conditions and bathymeter settings.