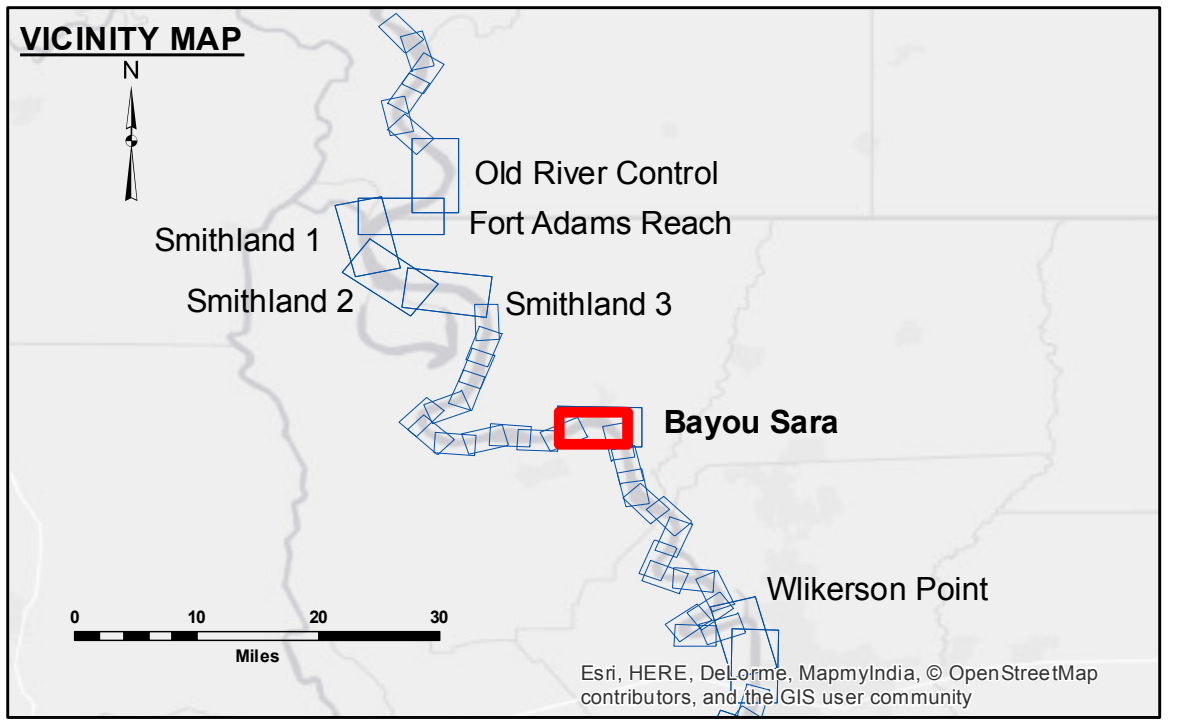


DISCLAIMER: The data represented on this map is the result of a data collection process for a specific US Army Corps of Engineers project. The data is only valid for its intended use, control, time and accuracy specifications. The user is responsible for the results of the data. The application of the data for other than its intended purpose is at the user's risk. Hydrographic survey data is subject to change due to several factors including but not limited to dredging, shoaling, and other changes in the hydrographical conditions when developed after the date of the survey. The information depicted on this map represents the results of a survey conducted on the date of the survey and is not intended to represent the general condition existing at that time.

Submitted:	Surveyed By:	DR, JA
Recommended:	Plotted By:	AO
Approved:	Checked By:	MM

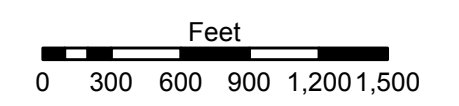
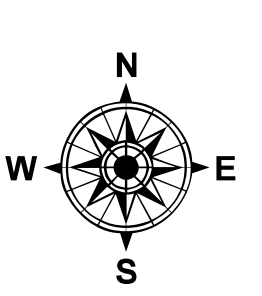
U.S. ARMY CORPS OF ENGINEERS
NEW ORLEANS DISTRICT

MISSISSIPPI RIVER - SHALLOW DRAFT
BAYOU SARA
MS_24_BYS_20151029
29 October 2015



LEGEND

--- Federal Navigation Channel	○ Cable Area	■ Shoaling Area	■ 0' and above
— Federal Navigation Center Line	□ Placement Area	● Shoalest Sounding**	■ 0' to -5'
— As-built Pipeline/Cable	□ Anchorage Area	☆ Beacon, General	■ -5' to -9'
..... Unconfirmed Pipeline/Cable	⊗ Obstruction Point	◆ Red Navigation Buoy	■ -9' and below
— Project Depth Contour	⚓ Wrecks-Submerged	◆ Green Navigation Buoy	



LWRP: 6.7
Gage Reading: RR:22.4 BR:9.8 USED: 16.0 NGVD
Sea Conditions: CALM
Vessel Name: M/V OB 189
Survey Type: CONDITION
Sounding Frequency***: HIGH

NOTES:
Horizontal Coordinate System:
North American Datum of 1983 (NAD83), projected to the State Plane Coordinate System (SPCS), Louisiana South Zone. Distance units in U.S. Survey Feet.
Vertical Datum:
Soundings are shown in feet and indicate depths below Low Water Reference Plane 2007 (NGVD).
Distances on the Mississippi River, above and below Head of Passes are shown at 1 mile intervals.
The location of navigation aids are based on and provided by the U.S. Coast Guard and USACE crew.
2010 Aerial Photography data source: NAIP, USDA-FSA-APFO Aerial Photography Field Office.
Reference is USACE IENC U35LM236.
*** Shoalest Sounding per Quarter per Reach.
*** High frequency (200 kHz) survey data represents the first signal return at a sounding location and will include suspended solids, known as "fluff", if present. Low frequency (20 kHz) survey data normally penetrates through this "fluff" layer to depict elevations of consolidated bottom material. Low frequency accuracies may vary depending on channel conditions and fathometer settings.

Sheet Reference Number
24 of 39
Revision Number:
3.8-20150202