

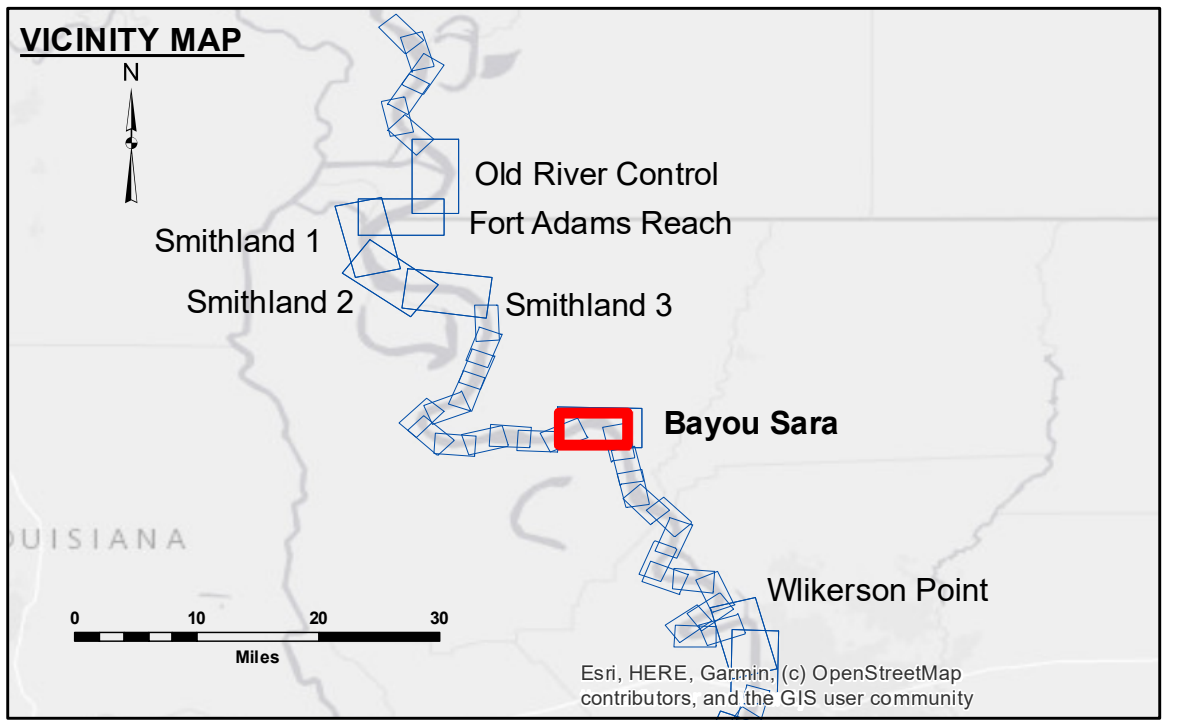
**DISCLAIMER:** The data represents the results of data collection/processing for a specific US Army Corps of Engineers project. It is only valid for its intended use, context, time and accuracy specifications. The user is responsible for the results of their use. The application of the data for other than its intended purpose is not recommended. Data Collection: Hydrographic survey data is subject to change rapidly due to several factors including but not limited to dredging, sedimentation, and channel migration. The user is responsible for the results of their use. The information depicted on this map represents the results of a survey conducted on the date of the survey. It is not intended to represent the general condition existing at that time.

U.S. ARMY CORPS OF ENGINEERS NEW ORLEANS DISTRICT		
Submitted:	Surveyed By: SP:JS	Plotted By: JH
Recommended: Chief Survey Section	Checked By: JH	Approved: Chief Waterways Maintenance Section

**MISSISSIPPI RIVER - SHALLOW DRAFT**  
**BAYOU SARA**  
**MS\_24\_BYS\_20240926\_CS**  
**26 September 2024**

**Sheet Reference Number**  
**24 of 39**

Revision Number:  
4.2-20240420



LEGEND			
--- Federal Navigation Channel	○ Cable Area	■ Shoaling Area	■ 0' and above
— Federal Navigation Center Line	□ Placement Area	● Shoalest Sounding**	■ 0' to -5'
— As-built Pipeline/Cable	□ Anchorage Area	★ Beacon, General	■ -5' to -9'
..... Unconfirmed Pipeline/Cable	⊗ Obstruction Point	◆ Red Navigation Buoy	■ -9' and below
— Project Depth Contour	⚓ Wrecks-Submerged	◆ Green Navigation Buoy	

LWRP: 6.6  
 Gage Reading: RR:16.2 SF:8.3 USED:9.2 NAVD88  
 Sea Conditions: CALM  
 Vessel Name: OB169  
 Survey Type: CONDITION  
 Sounding Frequency\*\*\*: HIGH

SCALE IN FEET  
 0 300 600 900 1,200 1,500

**NOTES:**  
 Horizontal Coordinate System: North American Datum of 1983 (NAD83), projected to the State Plane Coordinate System (SPCS), Louisiana South Zone. Distance units in U.S. Survey Feet.  
 Vertical Datum: Soundings are shown in feet and indicate depths below Low Water Reference Plane 2007 (NAVD). Distances on the Mississippi River, above and below Head of Passes are shown at 1 mile intervals.  
 The location of navigation aids are base on and provided by the U.S. Coast Guard and USACE crew. 2015 Aerial Photography data source: NAIP, USDA-FSA-APFO Aerial Photography Field Office.  
 Reference is USACE IENC U35LM236.  
 \*\*\* Shoalest Sounding per Quarter per Reach.  
 \*\*\* High frequency (200 kHz) survey data represents the first signal return at a sounding location and will include suspended solids, known as "fluff", if present. Low frequency (20 kHz) survey data normally penetrates through this "fluff" layer to depict elevations of consolidated bottom material. Low frequency accuracies may vary depending on channel conditions and fathometer settings.