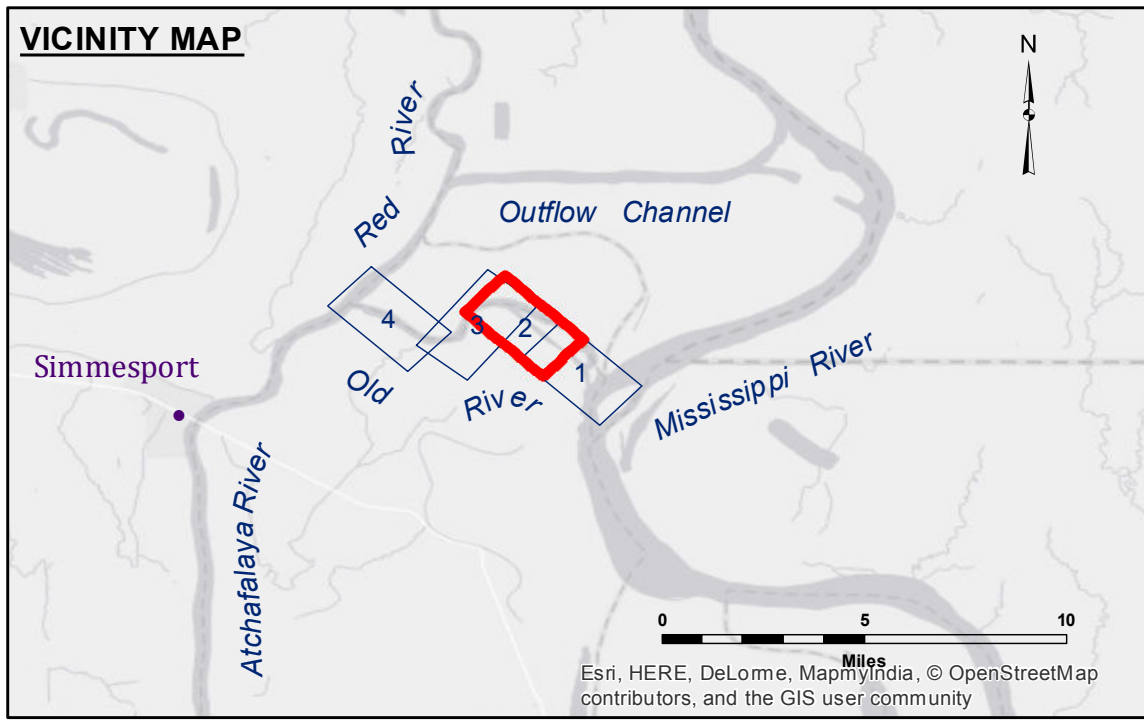
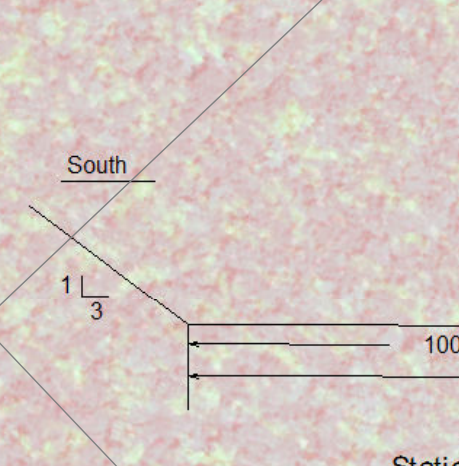
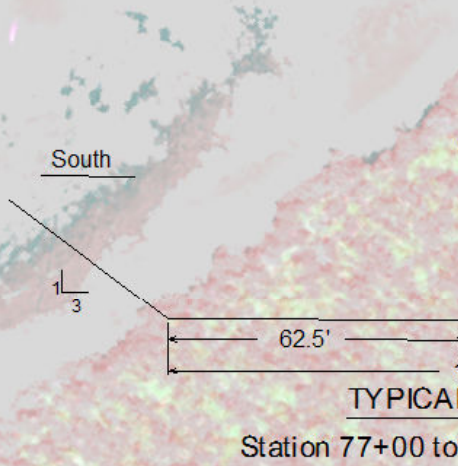
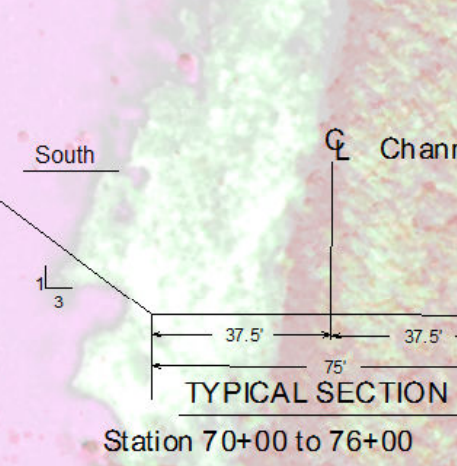


TABLE OF COORDINATES

POINT NO.	X	Y
1	3173799.847	911152.012
2	3173757.630	911193.041
3	3168453.395	916211.660
4	3166622.631	916698.836
5	3165637.125	916460.188

CURVE #2 DATA
 $\Delta = 57^{\circ}1'33.760''$
 $D = 2^{\circ}53'13.2''$
 $R = 1984.33$
 $T = 1974.99$
 $L = 1894.48$



LEGEND

--- Federal Navigation Channel	○ Cable Area	□ Borrow Area	■ -8' and above
— Federal Navigation Center Line	□ Placement Area	● Shoalest Sounding**	■ -8' to -10'
— As-built Pipeline/Cable	□ Anchorage Area	★ Beacon, General	■ -10' to -12'
..... Unconfirmed Pipeline/Cable	⊗ Obstruction Point	◆ Red Navigation Buoy	■ -12' and below
— Project Depth Contour	⚓ Wrecks-Submerged	◆ Green Navigation Buoy	

NOTES:

Horizontal Coordinate System:
 North American Datum of 1983 (NAD83), projected to the State Plane
 Coordinate System (SPCS), Louisiana South Zone. Distance units in U.S. Survey Feet.

Vertical Datum:
 Soundings are shown in feet and indicate depths below National Geodetic Vertical Datum of 1929 (NGVD29).

The location of navigation aids are based on and provided by the U.S. Coast Guard. Positions of navigation aids shown may also have been surveyed in the field by USACE.

2010 Aerial Photography data source: NAIP, 1998 DOQQ imagery shown in green from USGS.

Reference is N.O.A.A. Navigation Chart No. 11354.

** Shoalest Sounding per Quarter per Reach.

*** High frequency (200 kHz) survey data represents the first signal return at a sounding location and will include suspended solids, known as "fluff", if present. Low frequency (20 kHz) survey data normally penetrates through this "fluff" layer to depict elevations of consolidated bottom material. Low frequency accuracies may vary depending on channel conditions and fathometer settings.

Gage Reading: ORL TB: 12.60 NGVD
 Sea Conditions: CALM
 Vessel Name: OB-189
 Survey Type: CONDITION
 Sounding Frequency***: HIGH

Scale: 0 to 1,500 Feet



DISCLAIMER: The United States Government furnishes these data and the recipient accepts and uses them with the express understanding that the data are not to be used for any purpose other than that for which they were originally prepared, and that the data are not to be used for any purpose other than that for which they were originally prepared. The user is responsible for the results of any use of the data. The user is responsible for the results of any use of the data. The user is responsible for the results of any use of the data.

**U.S. ARMY CORPS OF ENGINEERS
 NEW ORLEANS DISTRICT**

Submitted:	Surveyed By: DR.SP
Recommended: Chief Survey Section	Plotted By: BITD
Approved: Chief Waterways Maintenance Section	Checked By: TC

**OLD RIVER LOCK VICINITY
 OLD RIVER LOCK TAILBAY
 OR_02_LTB_20160726
 26 July 2016**

**Sheet Reference Number
 2 of 4**