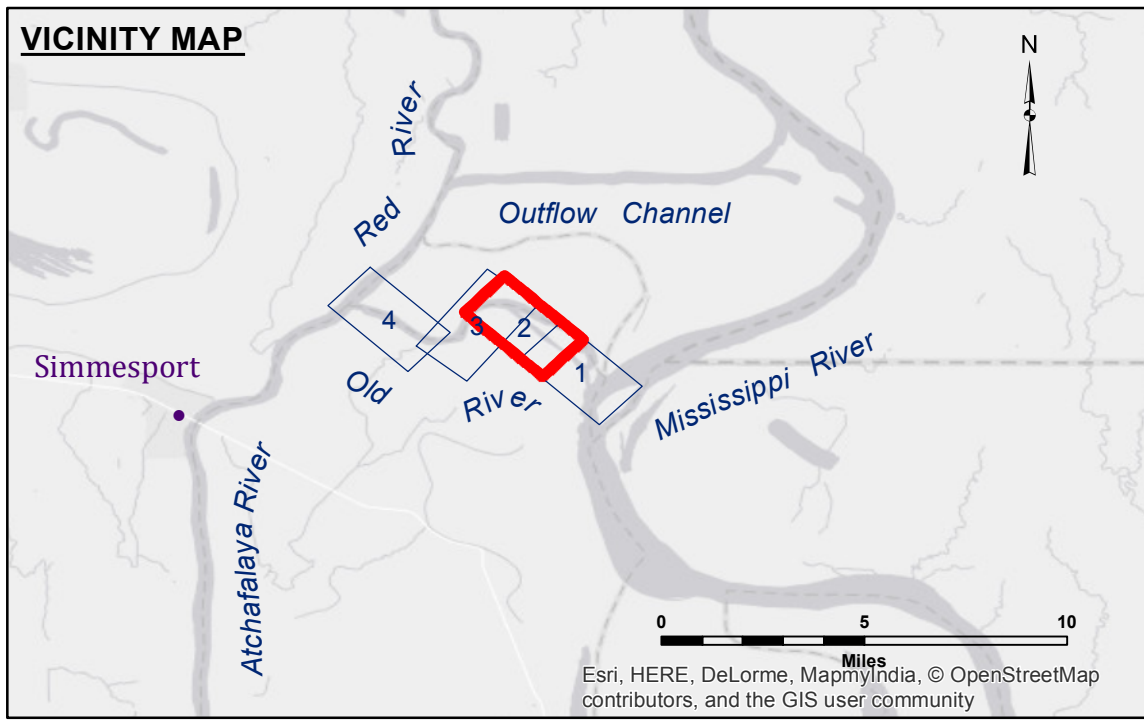
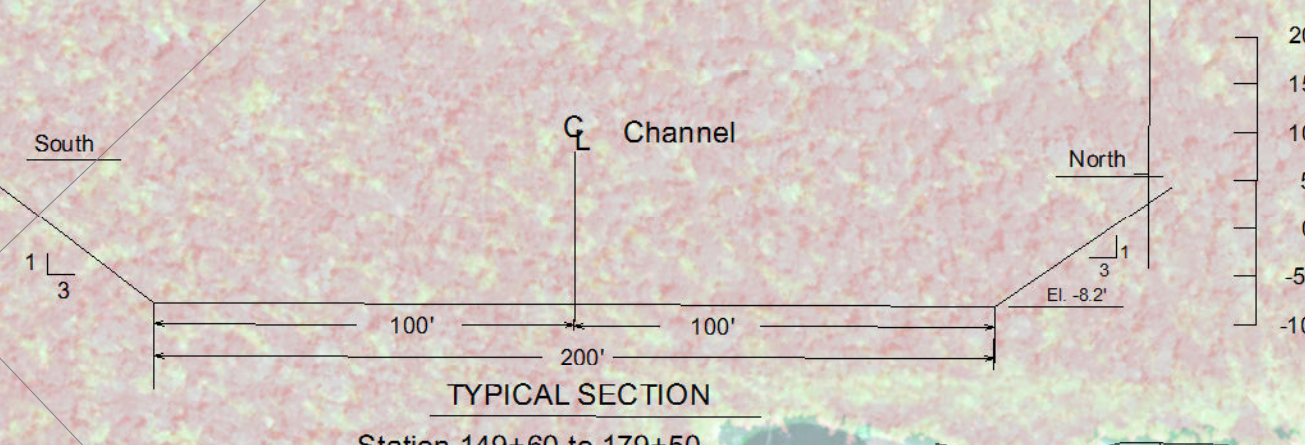
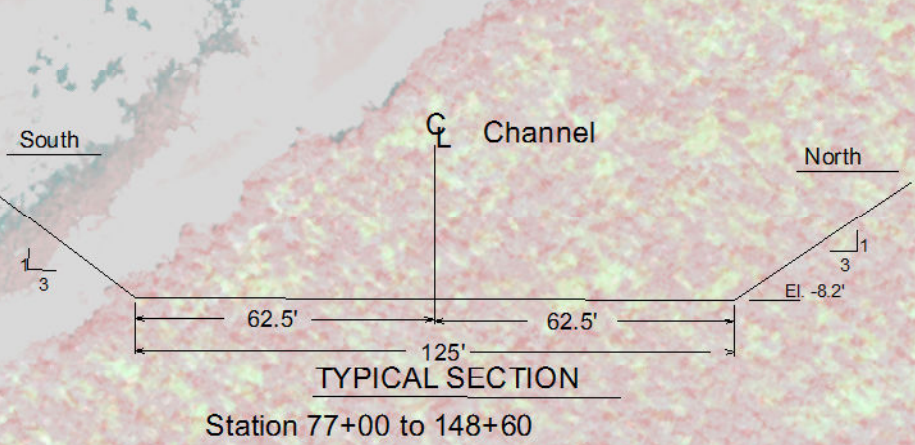
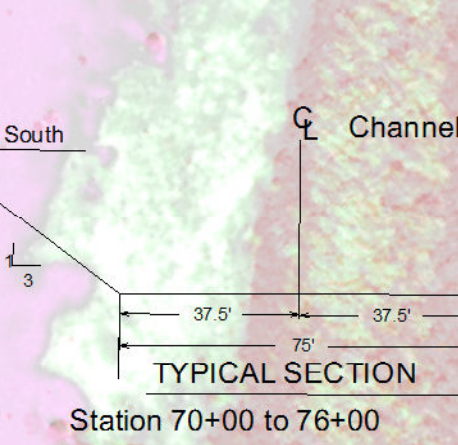


TABLE OF COORDINATES

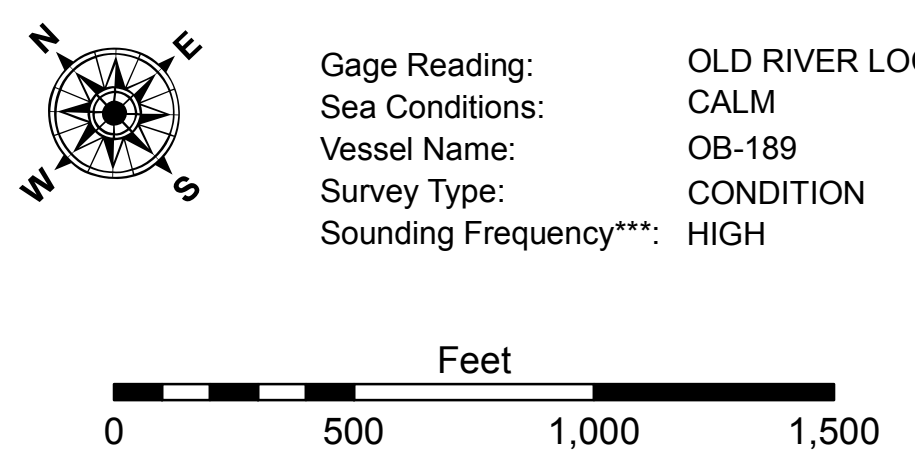
POINT NO.	X	Y
1	3173799.847	911152.012
2	3173757.630	911193.041
3	3168453.395	916211.660
4	3166622.631	916698.836
5	3165637.125	916460.188

CURVE #2 DATA
 $\Delta = 57^\circ 1'33.760''$
 $D = 2^\circ 53' 13.2''$
 $R = 1984.33$
 $L = 1974.99$
 $LC = 1894.48$



LEGEND

--- Federal Navigation Channel	○ Cable Area	□ Borrow Area	■ -8' and above
— Federal Navigation Center Line	□ Placement Area	● Shoalest Sounding**	■ -8' to -10'
— As-built Pipeline/Cable	□ Anchorage Area	★ Beacon, General	■ -10' to -12'
..... Unconfirmed Pipeline/Cable	⊗ Obstruction Point	◆ Red Navigation Buoy	■ -12' and below
— Project Depth Contour	⚓ Wrecks-Submerged	◆ Green Navigation Buoy	



DISCLAIMER

The information depicted on this map represents the results of a survey conducted under contract to the U.S. Army Corps of Engineers. The Corps of Engineers does not warrant the accuracy of the information depicted on this map. The Corps of Engineers is not responsible for any errors or omissions in this map. The Corps of Engineers is not responsible for any damage or injury resulting from the use of this map. The Corps of Engineers is not responsible for any changes in the information depicted on this map. The Corps of Engineers is not responsible for any changes in the information depicted on this map.

U.S. ARMY CORPS OF ENGINEERS
 NEW ORLEANS DISTRICT

Submitted:	Surveyed By: RYLAND/ADAMS
Recommended: Chief, Survey Section	Plotted By: BD
Approved: Chief, Waterways Maintenance Section	Checked By: AC

OLD RIVER LOCK VICINITY
OLD RIVER LOCK TAILBAY
OR_02_LTB_20170316_CS
 16 March 2017

Sheet Reference Number
2 of 4