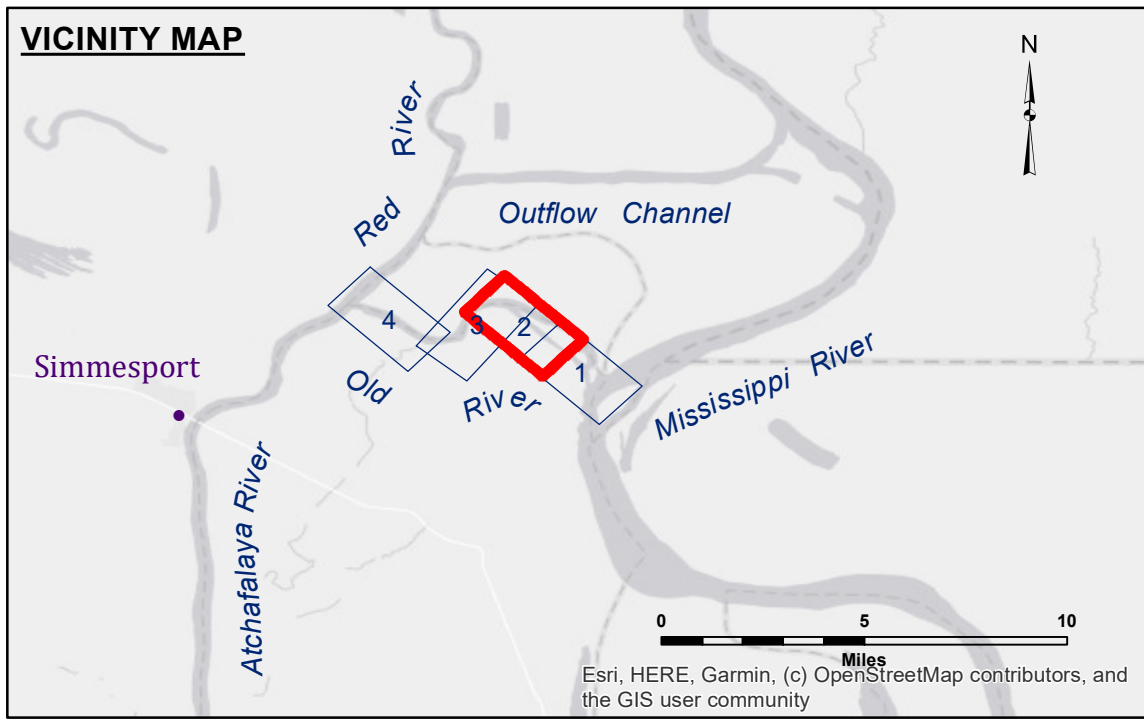
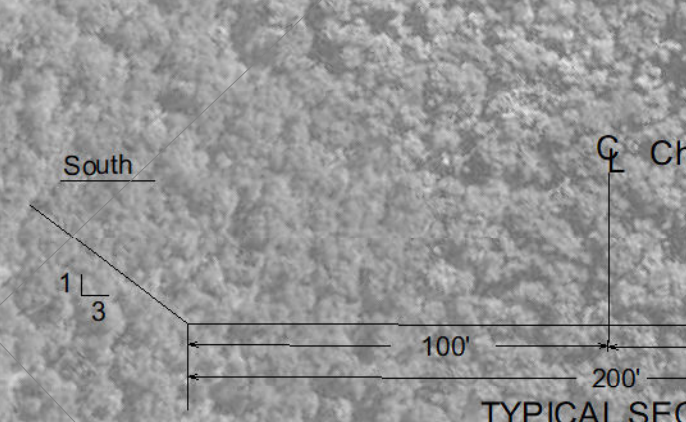
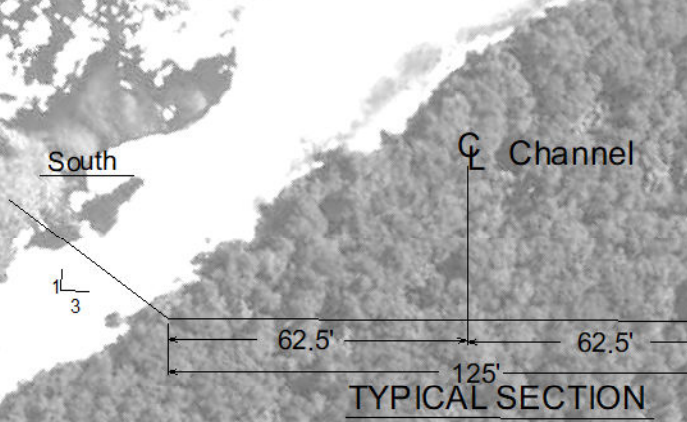
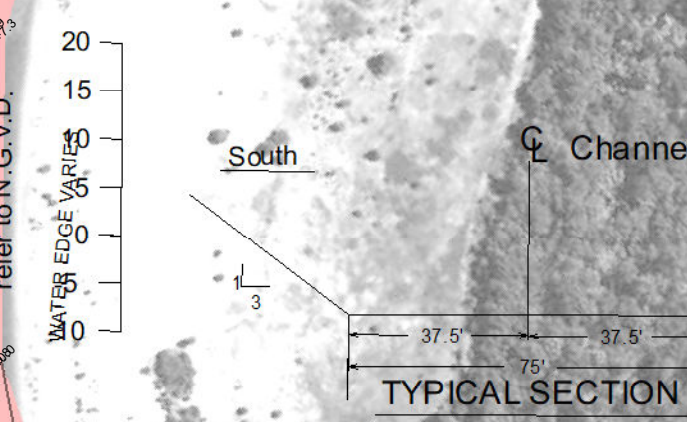


TABLE OF COORDINATES

POINT NO.	X	Y
1	3173799.847	911152.012
2	3173757.630	911193.041
3	3168453.395	916211.660
4	3166622.631	916698.836
5	3165637.125	916460.188

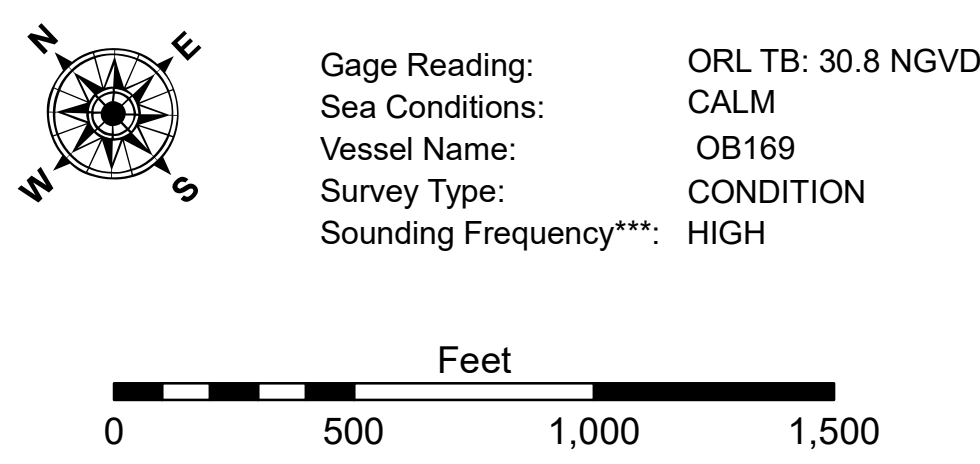
CURVE #2 DATA
 $\Delta = 57^\circ 13' 37.60''$
 $D = 2^\circ 53' 13.2''$
 $R = 1984.33$
 $T = 1076.00$
 $L = 1974.99$
 $LC = 1894.48$

APPROX LIMIT OF DREDGING
 STA. 179+50



LEGEND

--- Federal Navigation Channel	○ Cable Area	□ Borrow Area	■ -8' and above
— Federal Navigation Center Line	□ Placement Area	● Shoalest Sounding**	■ -8' to -10'
— As-built Pipeline/Cable	□ Anchorage Area	★ Beacon, General	■ -10' to -12'
..... Unconfirmed Pipeline/Cable	⊗ Obstruction Point	◆ Red Navigation Buoy	■ -12' and below
— Project Depth Contour	⚓ Wrecks-Submerged	◆ Green Navigation Buoy	



NOTES:
 Horizontal Coordinate System: North American Datum of 1983 (NAD83), projected to the State Plane Coordinate System (SPCS), Louisiana South Zone. Distance units in U.S. Survey Feet.
 Vertical Datum: Soundings are shown in feet and indicate depths below National Geodetic Vertical Datum of 1929 (NGVD29).
 The location of navigation aids are based on and provided by the U.S. Coast Guard. Positions of navigation aids shown may also have been surveyed in the field by USACE.
 2015 Aerial Photography data source: NAIP, 1998 DOQQ imagery shown in green from USGS.
 Reference is N.O.A.A. Navigation Chart No. 11354.
 ** Shoalest Sounding per Quarter per Reach.
 *** High frequency (200 kHz) survey data represents the first signal return at a sounding location and will include suspended solids, known as "fluff", if present. Low frequency (20 kHz) survey data normally penetrates through this "fluff" layer to depict elevations of consolidated bottom material. Low frequency accuracies may vary depending on channel conditions and fathometer settings.



DISCLAIMER:
 The information depicted on this map represents the results of a survey conducted by the U.S. Army Corps of Engineers. It is not intended to be used for any purpose other than that for which it was prepared. The user is responsible for the results of any application of the data for other than its intended purpose. The U.S. Army Corps of Engineers does not accept any responsibility for changes in the hydrographic conditions which develop after the date of the survey. Product manuals should not rely solely upon this information.

U.S. ARMY CORPS OF ENGINEERS
 NEW ORLEANS DISTRICT

Submitted:	Surveyed By: SP-JS
Recommended:	Plotted By: AO
Approved:	Checked By: AC

OLD RIVER LOCK VICINITY
OLD RIVER LOCK TAILBAY
OR_02_LTB_20240608_CS
 08 June 2024

Sheet Reference Number
 2 of 4