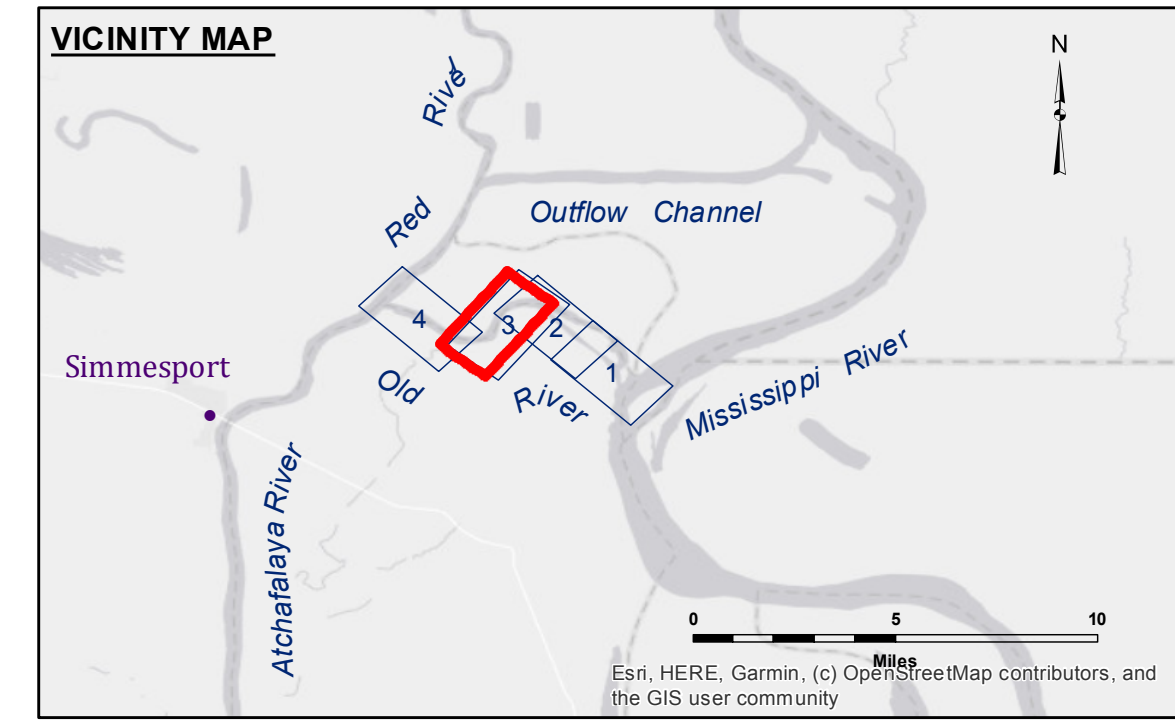
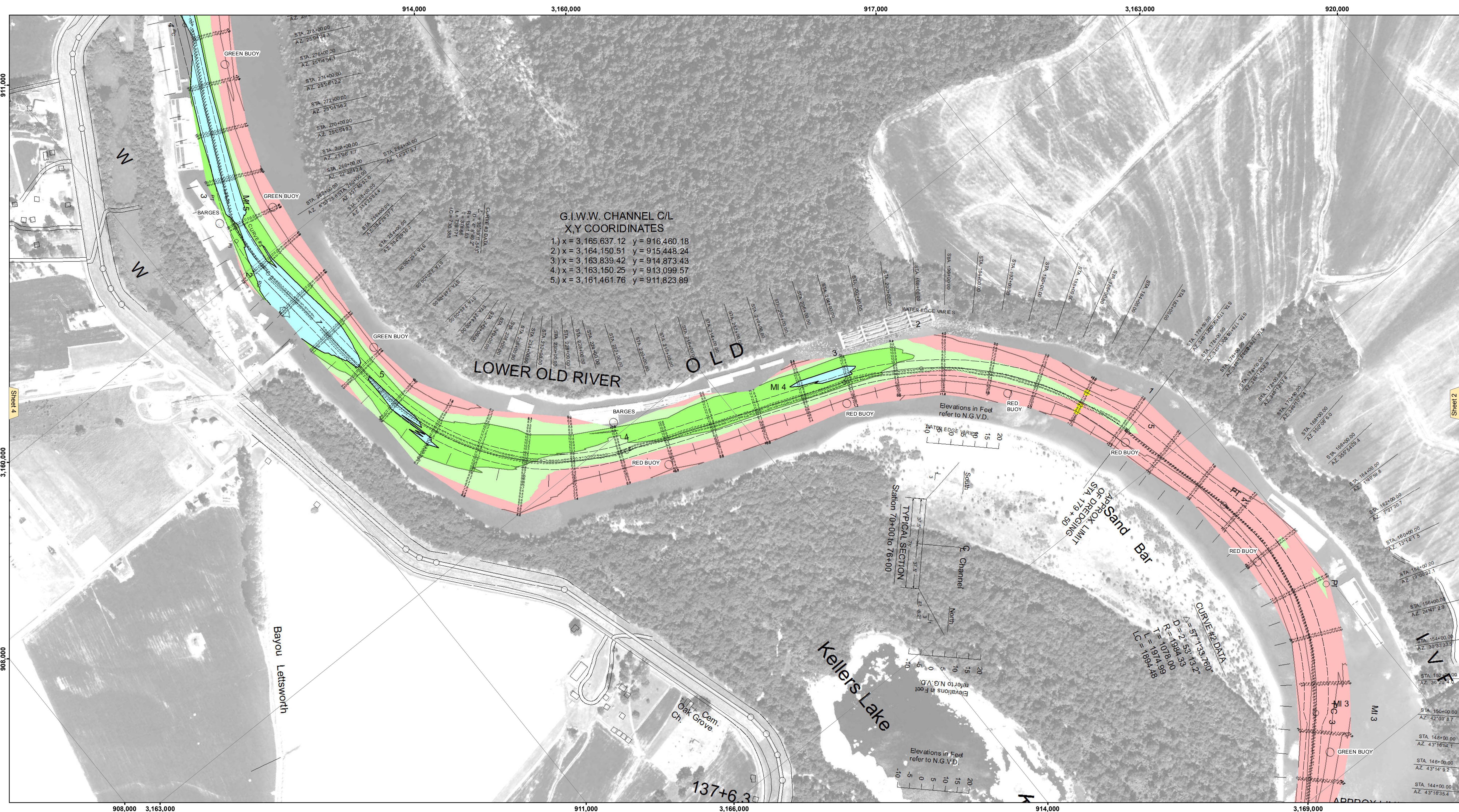




Accession: The data represents the results of data collection processing for a specific US Army Corps of Engineers project. The data is not intended for use in any other application. It is only valid for its intended use, control, time and accuracy specifications. The user is responsible for the results. The user must verify the application of the data for other than its intended purpose.

Data Constraints: Hydrographic survey data is subject to change due to several factors including but not limited to dredging, channel migration, and other factors. The user must verify the data for its intended purpose. The user must verify the data for its intended purpose. The user must verify the data for its intended purpose.

The information depicted on this map represents the results of a survey conducted on the date of the survey. The user must verify the data for its intended purpose. The user must verify the data for its intended purpose. The user must verify the data for its intended purpose.



LEGEND

--- Federal Navigation Channel	○ Cable Area	□ Borrow Area	■ -8' and above
— Federal Navigation Center Line	□ Placement Area	● Shoalest Sounding**	■ -8' to -10'
— As-built Pipeline/Cable	□ Anchorage Area	☆ Beacon, General	■ -10' to -12'
..... Unconfirmed Pipeline/Cable	⊗ Obstruction Point	♦ Red Navigation Buoy	■ -12' and below
— Project Depth Contour	⚓ Wrecks-Submerged	◆ Green Navigation Buoy	

NOTES:

Horizontal Coordinate System:
 North American Datum of 1983 (NAD83), projected to the State Plane Coordinate System (SPCS), Louisiana South Zone. Distance units in U.S. Survey Feet.

Vertical Datum:
 Soundings are shown in feet and indicate depths below National Geodetic Vertical Datum of 1929 (NGVD29).

The location of navigation aids are based on and provided by the U.S. Coast Guard. Positions of navigation aids shown may also have been surveyed in the field by USACE.

2015 Aerial Photography data source: NAIP, 1998 DOQQ imagery shown in green from USGS.

Reference is N.O.A.A. Navigation Chart No. 11354.

** Shoalest Sounding per Quarter per Reach.

*** High frequency (200 kHz) survey data represents the first signal return at a sounding location and will include suspended solids, known as "fluff", if present. Low frequency (20 kHz) survey data normally penetrates through this "fluff" layer to depict elevations of consolidated bottom material. Low frequency accuracies may vary depending on channel conditions and fathometer settings.

Gage Reading: ORL TB: 8.90 NGVD
 Sea Conditions: CALM
 Vessel Name: M/V OB 189
 Survey Type: CONDITION
 Sounding Frequency***: HIGH

Scale: 0 500 1,000 1,500 Feet

U.S. ARMY CORPS OF ENGINEERS
 NEW ORLEANS DISTRICT

Submitted:	Surveyed By: RYLANDHOSHMAN
Recommended: Chief Survey Section	Plotted By: BD
Approved: Chief Waterways Maintenance Section	Checked By: AC

OLD RIVER LOCK VICINITY
THREE RIVERS 1
OR_03_3R1_20201119_CS
19 November 2020

Sheet Reference Number
3 of 4