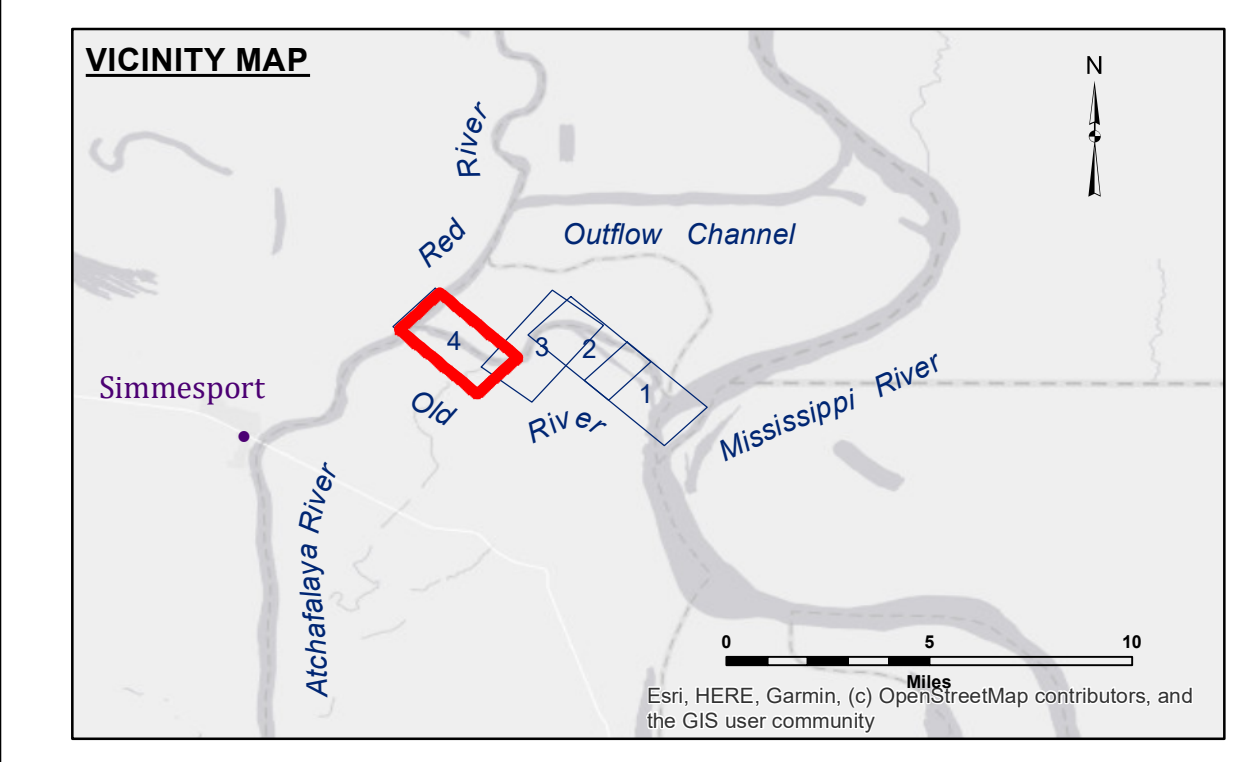


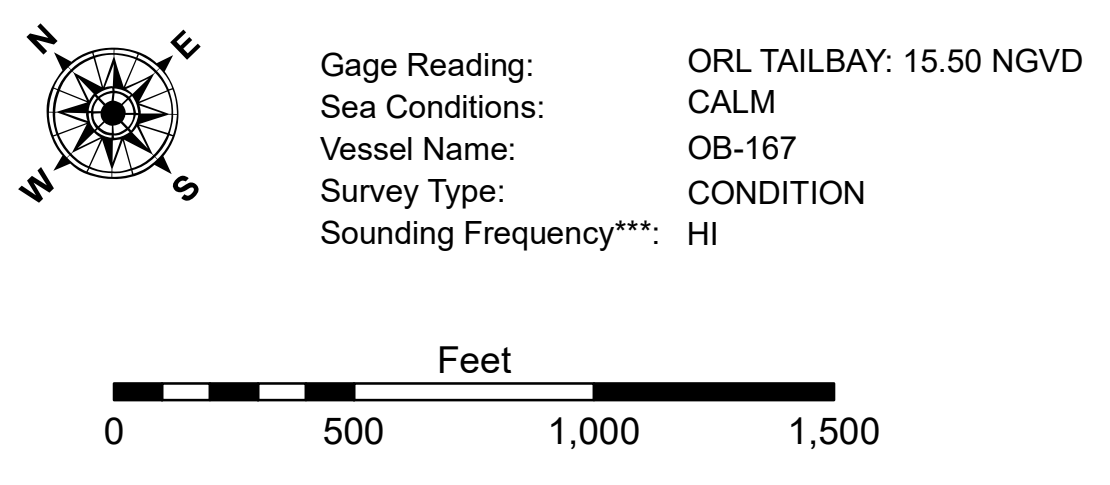
TABLE OF COORDINATES

POINT NO.	X	Y
1	3160729.903	911755.022
2	3160120.449	911697.669
3	315940.1048	911823.878
4	3158068.092	912453.314
5	3157265.795	912997.188
6	3155331.319	914800.430
7	3154295.135	915466.061
8	3152502.488	916195.316
9	3151447.847	916490.361
10	3151271.506	916518.500



LEGEND

--- Federal Navigation Channel	○ Cable Area	□ Borrow Area	■ -8' and above
— Federal Navigation Center Line	□ Placement Area	● Shoalest Sounding**	■ -8' to -10'
— As-built Pipeline/Cable	□ Anchorage Area	★ Beacon, General	■ -10' to -12'
..... Unconfirmed Pipeline/Cable	⊗ Obstruction Point	◆ Red Navigation Buoy	■ -12' and below
— Project Depth Contour	⚓ Wrecks-Submerged	◆ Green Navigation Buoy	



NOTES:
 Horizontal Coordinate System: North American Datum of 1983 (NAD83), projected to the State Plane Coordinate System (SPCS), Louisiana South Zone. Distance units in U.S. Survey Feet.
 Vertical Datum: Soundings are shown in feet and indicate depths below National Geodetic Vertical Datum of 1929 (NGVD29).
 The location of navigation aids are based on and provided by the U.S. Coast Guard. Positions of navigation aids shown may also have been surveyed in the field by USACE.
 2015 Aerial Photography data source: NAIP, 1998 DOQQ imagery shown in green from USGS.
 Reference is N.O.A.A. Navigation Chart No. 11354.
 ** Shoalest Sounding per Quarter per Reach.
 *** High frequency (200 kHz) survey data represents the first signal return at a sounding location and will include suspended solids, known as "fluff", if present. Low frequency (20 kHz) survey data normally penetrates through this "fluff" layer to depict elevations of consolidated bottom material. Low frequency accuracies may vary depending on channel conditions and fathometer settings.



DISTRIBUTION LIABILITY: The data represents the results of data collection/processing for a specific US Army Corps of Engineers project. It is only valid for its intended use, content, time and accuracy specifications. The user is responsible for the results. The user's application of the data for other than its intended purpose is at their own risk. The US Army Corps of Engineers does not warrant the accuracy of the data for other than its intended purpose.
 Data Constants: Hydrographic survey data is subject to change rapidly due to several factors including but not limited to changing hydrographic conditions when developing after the date of the survey. The US Army Corps of Engineers does not accept responsibility for changes in the hydrographic conditions when developing after the date of the survey. The user is responsible for the accuracy of the data. The user's application of the data for other than its intended purpose is at their own risk. The US Army Corps of Engineers does not warrant the accuracy of the data for other than its intended purpose.

U.S. ARMY CORPS OF ENGINEERS
NEW ORLEANS DISTRICT

Submitted:	Surveyed By: PM,JA
Recommended: Chief, Survey Section	Plotted By: BD
Approved: Chief, Waterways Maintenance Section	Checked By: AC

**OLD RIVER LOCK VICINITY
THREE RIVERS 2
OR_04_3R2_20220615_CS
15 June 2022**

**Sheet Reference Number
4 of 4**