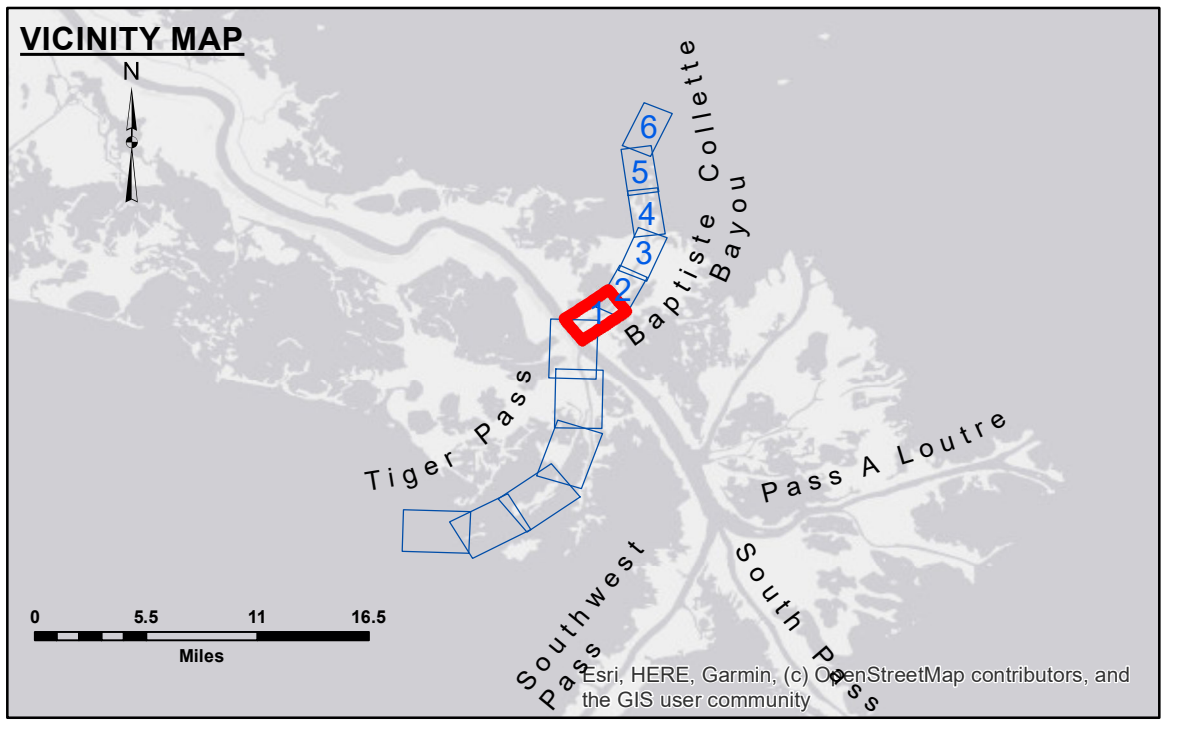


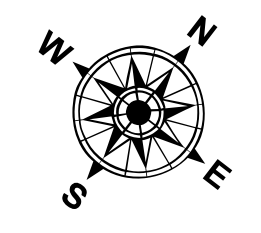
**Access/Restrictions:** The United States Government furnishes these data and the recipient accepts and uses them with the express understanding that they are not to be used for any purpose other than that for which they were prepared, or implied concerning the accuracy, completeness, reliability, usability or suitability for any particular purpose of the recipient. The user is responsible for the results of any use of these data, and the user shall indemnify and hold the United States Government harmless from any liability, whatsoever, to any person by reason of any use made hereof. These data belong to the Government. Therefore, the recipient may not transfer, copy, reproduce, or disseminate these data to others without the prior written consent of the United States Government. The recipient may not transfer these data to others without also transferring the Disclaimer. The information depicted on this map represents the results of a survey conducted by the United States Army Corps of Engineers to represent the general condition existing at that time.

U.S. ARMY CORPS OF ENGINEERS NEW ORLEANS DISTRICT		
Submitted:	Surveyed By: PM,SPS	Checked By: AC
Recommended: Chief Survey Section	Plotted By: BD	
Approved:	Chief Waterways Maintenance Section	

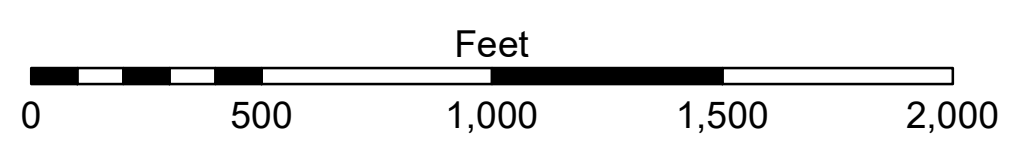


**LEGEND**

--- Federal Navigation Channel	○ Cable Area	□ Borrow Area	■ -4' and above
— Federal Navigation Center Line	■ Placement Area	● Shoalest Sounding**	■ -4' to -8'
— As-built Pipeline/Cable	□ Anchorage Area	★ Beacon, General	■ -8' to -10'
..... Unconfirmed Pipeline/Cable	⊗ Obstruction Point	◆ Red Navigation Buoy	■ -10' to -12'
— Project Depth Contour	⚓ Wrecks-Submerged	◆ Green Navigation Buoy	■ -12' to -16'
			■ -16' and below



Gage Reading: VRS RTN: 5.61 MLG AVG.  
Sea Conditions: CALM/CHOPPY  
Vessel Name: OB-167  
Survey Type: CONDITION  
Sounding Frequency\*\*\*: HI



**NOTES:**  
Horizontal Coordinate System:  
North American Datum of 1983 (NAD83), projected to the State Plane Coordinate System (SPCS), Louisiana South Zone. Distance units in U.S. Survey Feet.  
Vertical Datum:  
Soundings are shown in feet and indicate depths below Mean Low Gulf Datum (MLG).  
Datum relationships as of 01 May 2013:  
0.0' MLLW (2002-2006) = 0.0' NAVD88 (2009.55) = 3.5' MLG  
Distances on the Mississippi River, above and below Head of Passes are shown at 1 mile intervals.  
The location of navigation aids are base on and provided by the U.S. Coast Guard.  
2018 Aerial Photography data source: Precision Aerial Reconnaissance LLC.  
Reference is N.O.A. Navigation Chart No. 11353.  
\*\* Shoalest Sounding per Quarter per Reach.  
\*\*\* High frequency (200 kHz) survey data represents the first signal return at a sounding location and will include suspended solids, known as "fluff", if present. Low frequency (20 kHz) survey data normally penetrates through this "fluff" layer to depict elevations of consolidated bottom material. Low frequency accuracies may vary depending on channel conditions and fathometer settings.

**MISS. RIVER OUTLETS AT VENICE  
BAPTISTE COLLETTE, RIVER TO MI. 2.1  
OV\_01\_BAP\_20220407\_CS  
07 April 2022**

**Sheet Reference Number  
1 of 6**