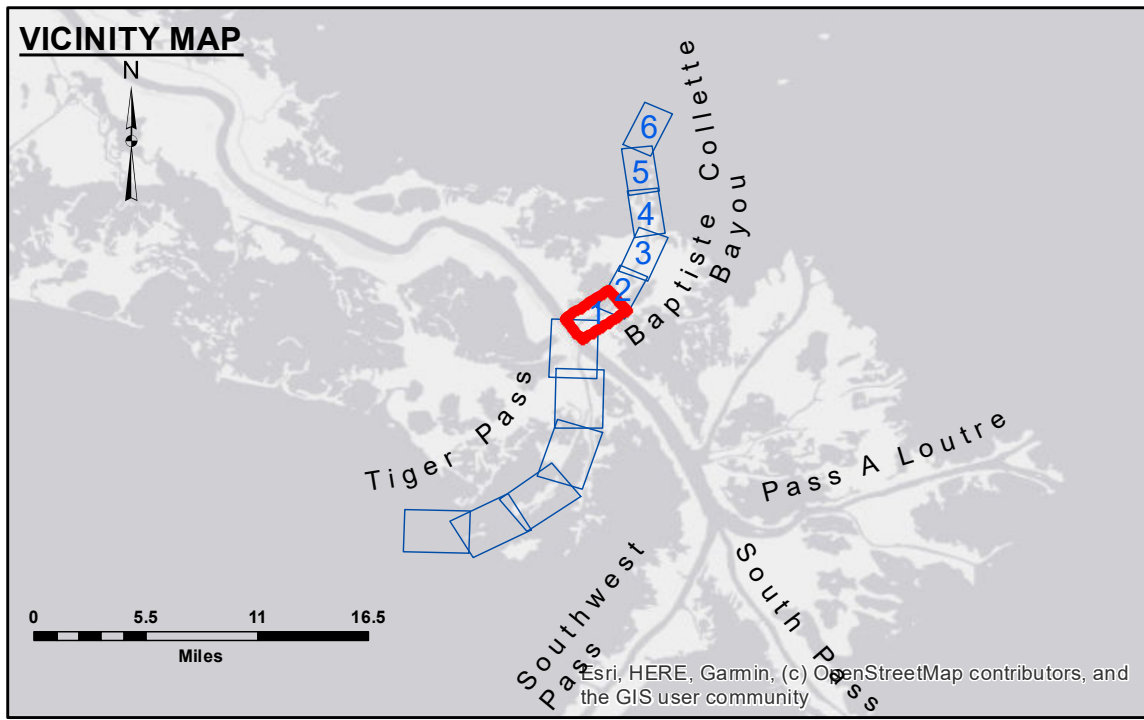


DISCLAIMER
The United States Government furnishes these data and the recipient accepts and uses them with the express understanding that the data are not to be used for any purpose other than that for which they were prepared, and that the data are not to be used for any purpose other than that for which they were prepared. The user is responsible for the results of any use of the data. The data are not to be used for any purpose other than that for which they were prepared. The user is responsible for the results of any use of the data. The data are not to be used for any purpose other than that for which they were prepared. The user is responsible for the results of any use of the data.

U.S. ARMY CORPS OF ENGINEERS NEW ORLEANS DISTRICT	
Submitted:	Surveyed By: MGF & JJC
Recommended:	Plotted By: TSS
Approved:	Checked By: MSK

**MISS. RIVER OUTLETS AT VENICE
BAPTISTE COLLETTE, RIVER TO MI. 2.1**
OV_01_BAP_20230118_AD
18 January 2023



LEGEND			
--- Federal Navigation Channel	○ Cable Area	□ Borrow Area	■ -4' and above
— Federal Navigation Center Line	■ Placement Area	● Shoalest Sounding**	■ -4' to -8'
— As-built Pipeline/Cable	□ Anchorage Area	☆ Beacon, General	■ -8' to -10'
..... Unconfirmed Pipeline/Cable	⊗ Obstruction Point	◆ Red Navigation Buoy	■ -10' to -12'
— Project Depth Contour	⚓ Wrecks-Submerged	◆ Green Navigation Buoy	■ -12' to -16'
			■ -16' and below

Vertical Datum:
 Soundings are shown in feet and indicate depths below Mean Low Gulf Datum (MLG).
 Datum relationships as of 01 May 2013:
 0.0' MLLW (2002-2006) = 0.0' NAVD88 (2009.55) = 3.5' MLG
 Distances on the Mississippi River, above and below Head of Passes are shown at 1 mile intervals.
 The location of navigation aids are based on and provided by the U.S. Coast Guard.
 2018 Aerial Photography data source: Precision Aerial Reconnaissance LLC.

Horizontal Coordinate System:
 North American Datum of 1983 (NAD83), projected to the State Plane Coordinate System (SPCS), Louisiana South Zone. Distance units in U.S. Survey Feet.

Gage Reading: 4.5 MLG @ DM25 @ 1000
Sea Conditions: CALM
Vessel Name: OB-173
Survey Type: CONDITION, SB
Sounding Frequency*:** LOW

Reference is N.O.A. Navigation Chart No. 11353.
 *** Shoalest Sounding per Quarter per Reach.

** High frequency (200 kHz) survey data represents the first signal return at a sounding location and will include suspended solids, known as "fluff", if present. Low frequency (20 kHz) survey data normally penetrates through this "fluff" layer to depict elevations of consolidated bottom material. Low frequency accuracies may vary depending on channel conditions and fathometer settings.