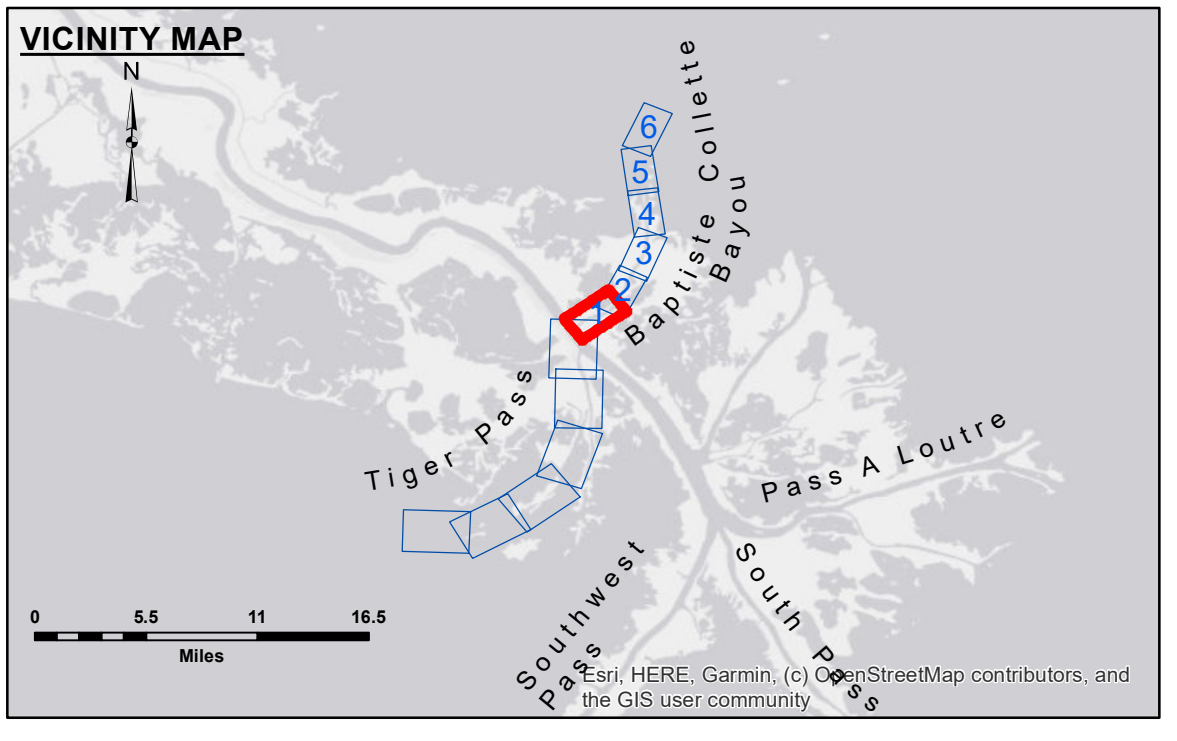


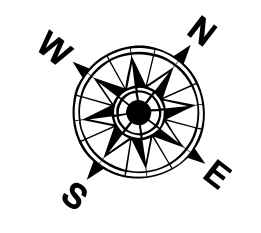
DISCLAIMER
The information depicted on this map represents the results of a survey conducted for a specific purpose and is not intended for any other purpose. The user is responsible for the accuracy, completeness, and reliability of the information for any particular purpose of the user. The information is provided as a service to the user and is not intended to be used for any purpose other than that for which it was provided. The user is responsible for the accuracy, completeness, and reliability of the information for any particular purpose of the user. The information is provided as a service to the user and is not intended to be used for any purpose other than that for which it was provided. The user is responsible for the accuracy, completeness, and reliability of the information for any particular purpose of the user.

U.S. ARMY CORPS OF ENGINEERS NEW ORLEANS DISTRICT	
Submitted:	Surveyed By: PM/KC
Recommended:	Plotted By: BD
Approved:	Checked By: AO/JH
Other: Waterways Maintenance Section	

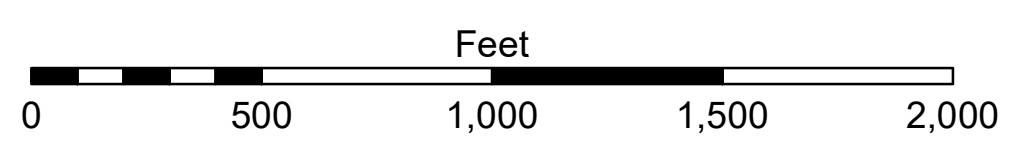


LEGEND

--- Federal Navigation Channel	○ Cable Area	□ Borrow Area	■ -4' and above
— Federal Navigation Center Line	□ Placement Area	● Shoalest Sounding**	■ -4' to -8'
— As-built Pipeline/Cable	□ Anchorage Area	★ Beacon, General	■ -8' to -10'
..... Unconfirmed Pipeline/Cable	⊗ Obstruction Point	◆ Red Navigation Buoy	■ -10' to -12'
— Project Depth Contour	⚓ Wrecks-Submerged	◆ Green Navigation Buoy	■ -12' to -16'
			■ -16' and below



Gage Reading: DM 16 VRS RTN: 3.44 MLG AVG.
Sea Conditions: CALM
Vessel Name: OB-167
Survey Type: CS
Sounding Frequency***: 24



NOTES:
Horizontal Coordinate System: North American Datum of 1983 (NAD83), projected to the State Plane Coordinate System (SPCS), Louisiana South Zone. Distance units in U.S. Survey Feet.
Vertical Datum: Soundings are shown in feet and indicate depths below Mean Low Gulf Datum (MLG). Datum relationships as of 01 May 2013: 0.0' MLLW (2002-2006) = 0.0' NAVD88 (2009.55) = 3.5' MLG
Distances on the Mississippi River, above and below Head of Passes are shown at 1 mile intervals.
The location of navigation aids are based on and provided by the U.S. Coast Guard.
2018 Aerial Photography data source: Precision Aerial Reconnaissance LLC.

**MISS. RIVER OUTLETS AT VENICE
BAPTISTE COLLETTE, RIVER TO MI. 2.1
OV_01_BAP_20230810_CS
10 August 2023**

**Sheet Reference Number
1 of 6**