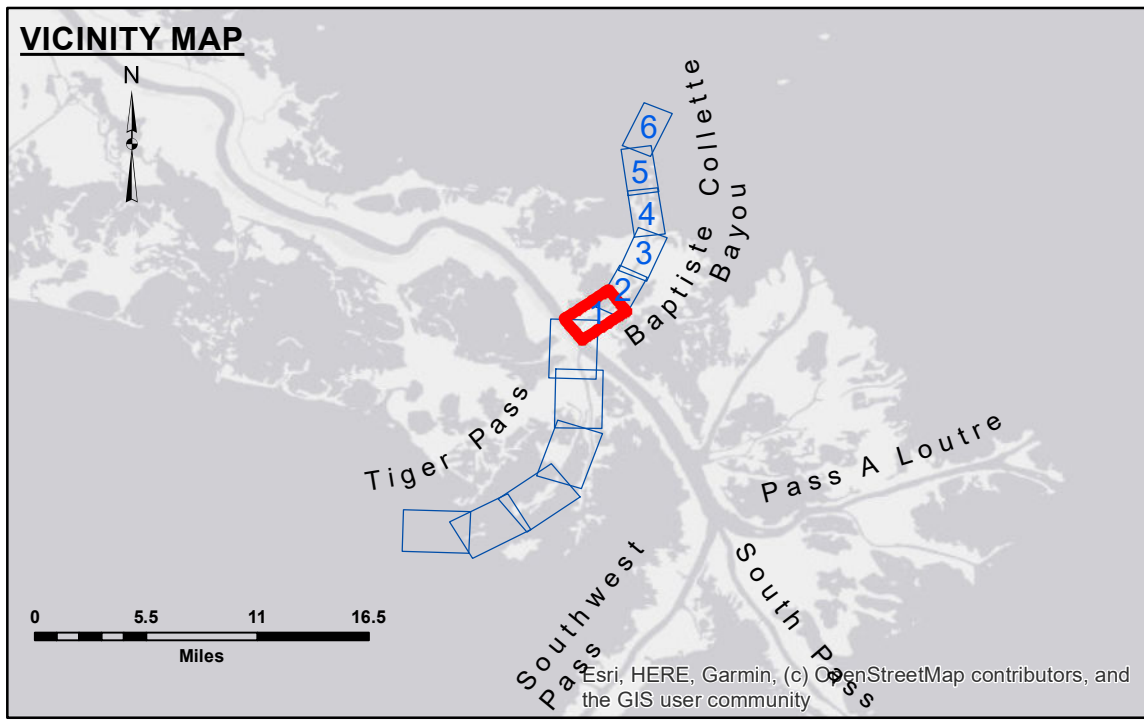


**Access/Consent:** The United States Government (USG) hereby grants to the recipient the right to use, reproduce, and disseminate the information depicted on this map for internal use only. The recipient may not transfer this data to others without also transferring the Disclaimers. The information depicted on this map represents the results of a survey conducted by the USG and is not intended to be used for any purpose other than that for which it was collected. The recipient may not transfer this data to others without also transferring the Disclaimers. The information depicted on this map represents the results of a survey conducted by the USG and is not intended to be used for any purpose other than that for which it was collected.

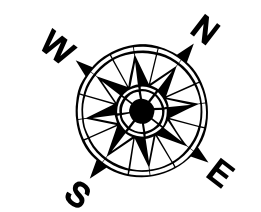
**Distribution Liability:** The data represents the results of data collection/processing for a specific US Army Corps of Engineers project. It is only valid for its intended use, content, time and accuracy specifications. The user is responsible for the results of the data. The USG does not warrant the accuracy of the data for other than its intended purpose. Data Constants: Hydrographic survey data is subject to change rapidly due to several factors including but not limited to changing hydrographic conditions which develop after the date of the survey. The US Army Corps of Engineers accepts no responsibility for changes in the hydrographic conditions which develop after the date of the survey. Prudent mariners should not rely solely upon this information.

U.S. ARMY CORPS OF ENGINEERS NEW ORLEANS DISTRICT	
Submitted:	Surveyed By: PM, JC
Recommended: Chief Survey Section	Plotted By: BD
Approved:	Checked By: AO/JH

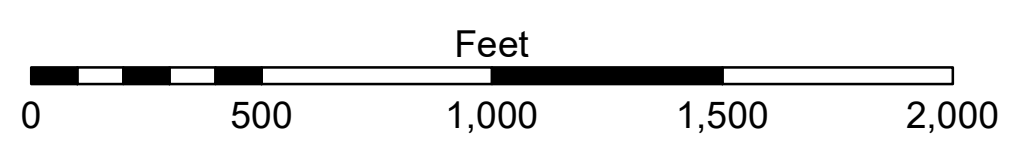
**MISS. RIVER OUTLETS AT VENICE  
BAPTISTE COLLETTE, RIVER TO MI. 2.1**  
OV\_01\_BAP\_20240717\_CS  
17 July 2024



LEGEND	
--- Federal Navigation Channel	● Cable Area
— Federal Navigation Center Line	■ Placement Area
— As-built Pipeline/Cable	□ Anchorage Area
..... Unconfirmed Pipeline/Cable	⊗ Obstruction Point
— Project Depth Contour	⚓ Wrecks-Submerged
□ Borrow Area	★ Beacon, General
● Shoalest Sounding**	◆ Red Navigation Buoy
★ Beacon, General	◆ Green Navigation Buoy
◆ Red Navigation Buoy	■ -7.5' and above
◆ Green Navigation Buoy	■ -7.5' to -11.5'
	■ -11.5' to -13.5'
	■ -13.5' to -15.5'
	■ -15.5' to -19.5'
	■ -19.5' and below



Gage Reading: DM 16 RTN: 0.56 MLLW AVG.  
Sea Conditions: CALM  
Vessel Name: DUCARPE  
Survey Type: CS  
Sounding Frequency\*\*\*: 24



**NOTES:**  
Horizontal Coordinate System:  
North American Datum of 1983 (NAD83), projected to the State Plane Coordinate System (SPCS), Louisiana South Zone. Distance units in U.S. Survey Feet.  
Vertical Datum:  
Soundings are shown in feet and indicate depths below Mean Lower Low Water Datum (MLLW). Datum relationships as of April 2023:  
0.0' NAVD88 (2009.55) = -0.51' MLLW (2002-2006) = 2.99' MLG  
Distances on the Mississippi River, above and below Head of Passes are shown at 1 mile intervals.  
The location of navigation aids are base on and provided by the U.S. Coast Guard.  
2018 Aerial Photography data source: Precision Aerial Reconnaissance LLC.  
Reference is N.O.A. Navigation Chart No. 11353.  
\*\* Shoalest Sounding per Quarter per Reach.  
\*\*\* High frequency (200 kHz) survey data represents the first signal return at a sounding location and will include suspended solids, known as "fluff", if present. Low frequency (20 kHz) survey data normally penetrates through this "fluff" layer to depict elevations of consolidated bottom material. Low frequency accuracies may vary depending on channel conditions and fathometer settings.

Sheet Reference Number  
1 of 6  
Revision Number:  
4.2-20240420