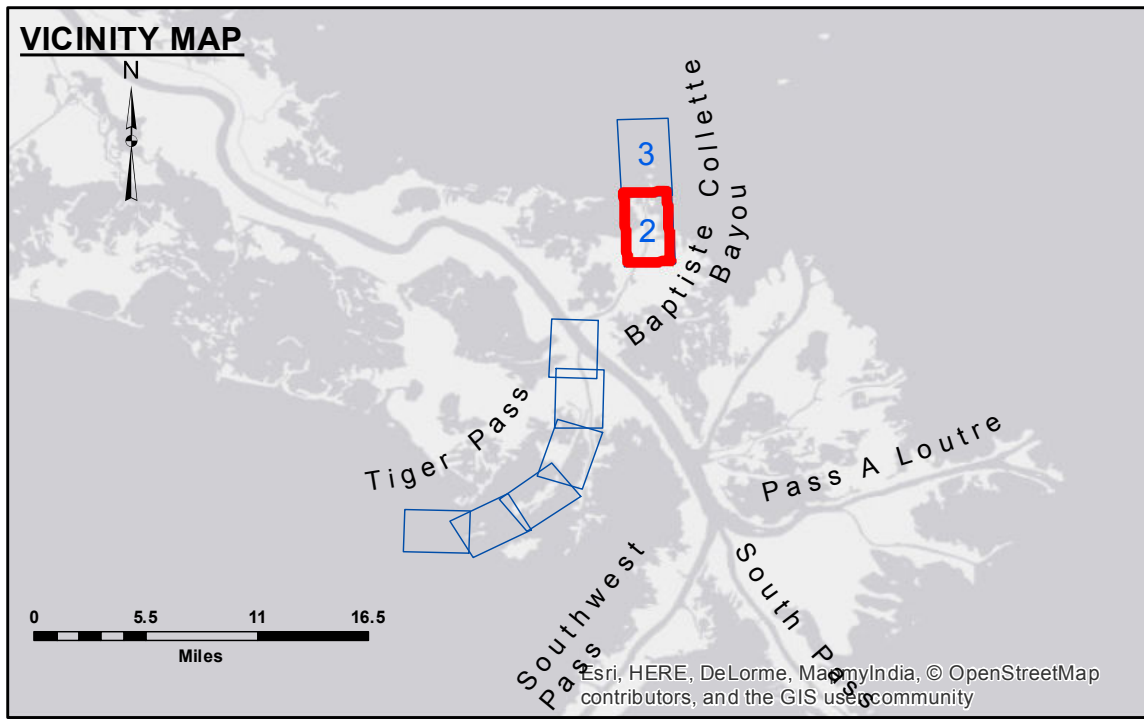


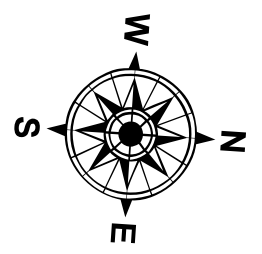
CL CURVE DATA SUMMARY

	CURVE 2	CURVE 3	CURVE 4
Δ	25°24'14"	12°12'36"	31°50'37"
D	01°00'00"	00°58'36"	01°05'46"
R	5729.58'	5866.46'	5227.04'
T	1291.43'	627.46'	1491.12'
L	2540.40'	1250.13'	2905.15'



LEGEND

--- Federal Navigation Channel	○ Cable Area	□ Borrow Area
— Federal Navigation Center Line	■ Placement Area	● Shoalest Sounding**
— As-built Pipeline/Cable	□ Anchorage Area	☆ Beacon, General
..... Unconfirmed Pipeline/Cable	⊗ Obstruction Point	◆ Red Navigation Buoy
— Project Depth Contour	⚓ Wrecks-Submerged	◆ Green Navigation Buoy
		■ -12' and above
		■ -12' to -14'
		■ -14' to -16'
		■ -16' and below



Gage Reading: DM 16: 4.3 MLG AVG.
 Sea Conditions: CHOPPY
 Vessel Name: OB-167
 Survey Type: CONDITION
 Sounding Frequency***: LOW

Vertical Datum:
 Soundings are shown in feet and indicate depths below Mean Low Gulf Datum (MLG).
 Datum relationships as of 01 May 2013:
 0.0' MLLW (2002-2006) = 0.0' NAVD83 (2009.55) = 3.5' MLG

Distances on the Mississippi River, above and below Head of Passes are shown at 1 mile intervals.

The location of navigation aids are base on and provided by the U.S. Coast Guard.

2013 Aerial Photography data source: GEOCLIP, Atlantic Group, LLC.

Reference is N.O.A. Navigation Chart No. 11353.

** Shoalest Sounding per Quarter per Reach.

*** High frequency (200 kHz) survey data represents the first signal return at a sounding location and will include suspended solids, known as "fluff", if present. Low frequency (20 kHz) survey data normally penetrates through this "fluff" layer to depict elevations of consolidated bottom material. Low frequency accuracies may vary depending on channel conditions and fathometer settings.

NOTES:

Horizontal Coordinate System:
 North American Datum of 1983 (NAD83), projected to the State Plane Coordinate System (SPCS), Louisiana South Zone. Distance units in U.S. Survey Feet.

Vertical Datum:
 Soundings are shown in feet and indicate depths below Mean Low Gulf Datum (MLG).
 Datum relationships as of 01 May 2013:
 0.0' MLLW (2002-2006) = 0.0' NAVD83 (2009.55) = 3.5' MLG

Distances on the Mississippi River, above and below Head of Passes are shown at 1 mile intervals.

The location of navigation aids are base on and provided by the U.S. Coast Guard.

2013 Aerial Photography data source: GEOCLIP, Atlantic Group, LLC.

Reference is N.O.A. Navigation Chart No. 11353.

** Shoalest Sounding per Quarter per Reach.

*** High frequency (200 kHz) survey data represents the first signal return at a sounding location and will include suspended solids, known as "fluff", if present. Low frequency (20 kHz) survey data normally penetrates through this "fluff" layer to depict elevations of consolidated bottom material. Low frequency accuracies may vary depending on channel conditions and fathometer settings.



Access/Contributor: The United States Government furnishes these data and the recipient accepts and uses them with the express understanding that the data are not to be used for any purpose other than that for which they were originally prepared. The user is responsible for the results, reliability, usability or suitability for any particular purpose of the data. The user shall not be held liable for any damage or injury resulting from the use of these data. The user shall not be held liable for any damage or injury resulting from the use of these data. The user shall not be held liable for any damage or injury resulting from the use of these data.

**U.S. ARMY CORPS OF ENGINEERS
NEW ORLEANS DISTRICT**

Submitted:	Surveyed By: SPPM
Recommended:	Plotted By: BID
Approved:	Checked By: JIB

**MISS. RIVER OUTLETS AT VENICE
BAPTISTE COLLETTE
OV_02_BAP_20150224
24 February 2015**

**Sheet Reference Number
2 of 3**

Revision Number:
3.6.1-20140429