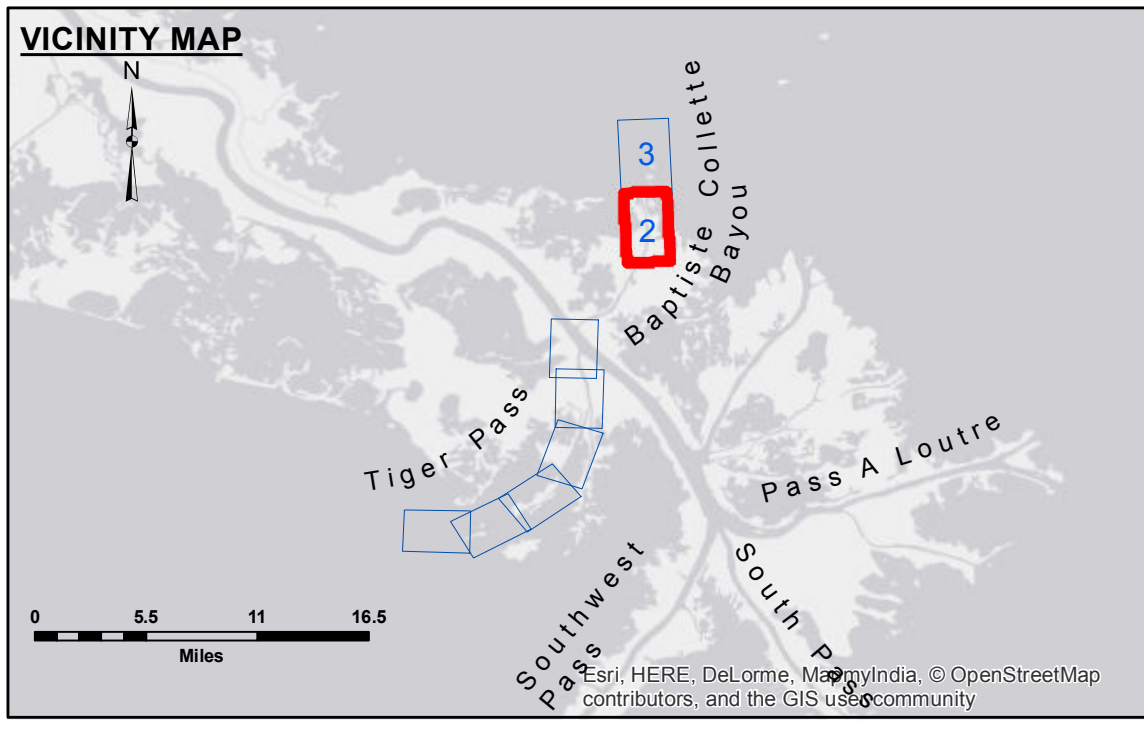
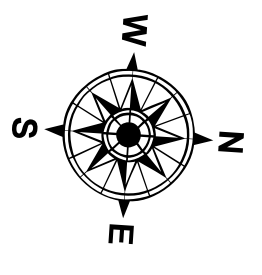


	CURVE 2	CURVE 3	CURVE 4
Δ	25°24'14"	12°12'36"	31°50'37"
D	01°00'00"	00°58'36"	01°05'46"
R	5729.58'	5866.46'	5227.04'
T	1291.43'	827.46'	1491.12'
L	2540.40'	1250.13'	2905.15'



--- Federal Navigation Channel	○ Cable Area	□ Borrow Area	■ -4' and above
— Federal Navigation Center Line	■ Placement Area	● Shoalest Sounding**	■ -4' to -8'
— As-built Pipeline/Cable	□ Anchorage Area	★ Beacon, General	■ -8' to -10'
..... Unconfirmed Pipeline/Cable	⊗ Obstruction Point	◆ Red Navigation Buoy	■ -10' to -12'
— Project Depth Contour	⚓ Wrecks-Submerged	◆ Green Navigation Buoy	■ -12' to -16'
			■ -16' and below



Gage Reading: DM 16: 3.63 MLG  
 Sea Conditions: ROUGH  
 Vessel Name: OB-167  
 Survey Type: CONDITION  
 Sounding Frequency\*\*\*: LOW

Vertical Datum:  
 Soundings are shown in feet and indicate depths below Mean Low Gulf Datum (MLG).  
 Datum relationships as of 01 May 2013:  
 0.0' MLLW (2002-2006) = 0.0' NAVD88 (2009.55) = 3.5' MLG

Distances on the Mississippi River, above and below Head of Passes are shown at 1 mile intervals.

The location of navigation aids are based on and provided by the U.S. Coast Guard.

2013 Aerial Photography data source: GEOCLIP, Atlantic Group, LLC.

Reference is N.O.A.A. Navigation Chart No. 11353.

\*\* Shoalest Sounding per Quarter per Reach.

\*\*\* High frequency (200 kHz) survey data represents the first signal return at a sounding location and will include suspended solids, known as "fluff", if present. Low frequency (20 kHz) survey data normally penetrates through this "fluff" layer to depict elevations of consolidated bottom material. Low frequency accuracies may vary depending on channel conditions and fathometer settings.



**DISCLAIMER:** The data represents the results of data collection for a specific project. The user is responsible for the accuracy, reliability, or suitability for any particular purpose of the information. The user is responsible for the results of the application of the data for other than its intended purpose. Data contained in this report is subject to change without notice. The user is responsible for the results of the application of the data for other than its intended purpose. The user is responsible for the results of the application of the data for other than its intended purpose. The user is responsible for the results of the application of the data for other than its intended purpose.

Submitted:	Checked:	Approved:
SP, PM	BITD	IB
U.S. ARMY CORPS OF ENGINEERS NEW ORLEANS DISTRICT		

**MISS. RIVER OUTLETS AT VENICE  
 BAPTISTE COLLETTE  
 OV\_02\_BAP\_20151016  
 16 October 2015**

**Sheet Reference Number  
 2 of 3**

Revision Number:  
 3.8.0-20150202