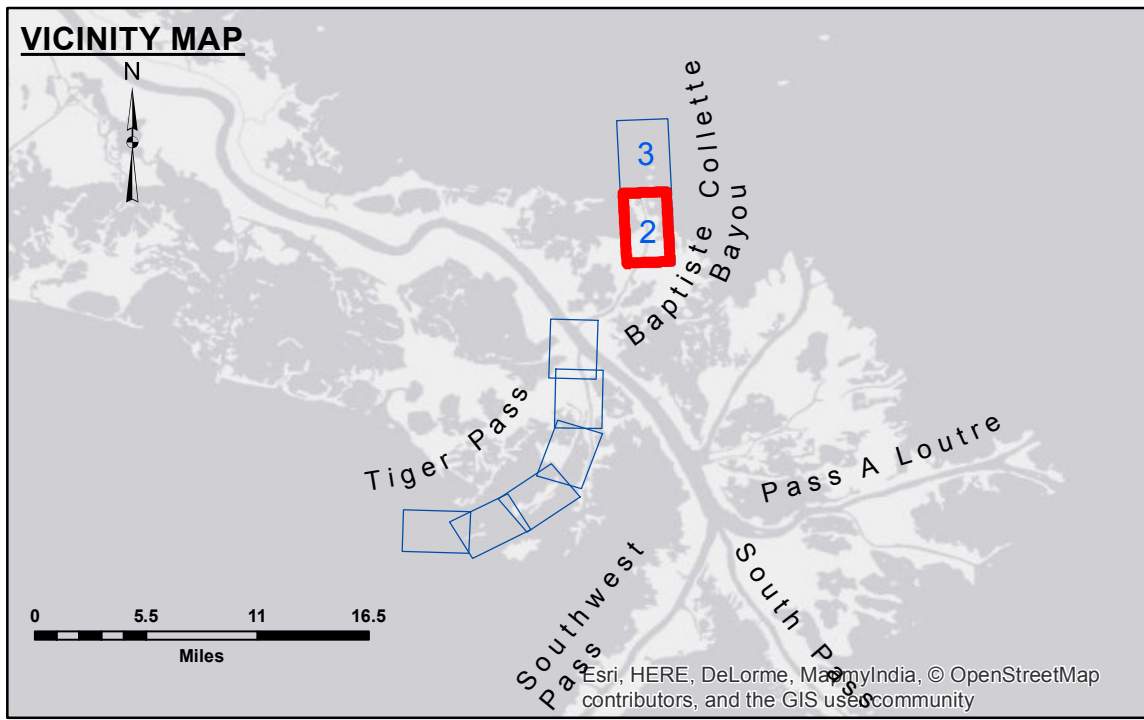
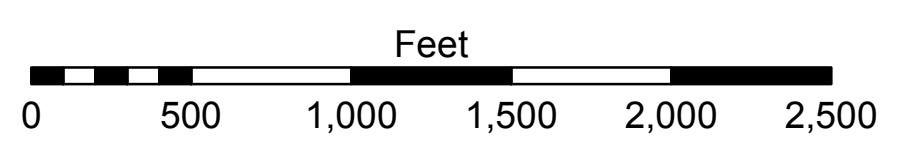
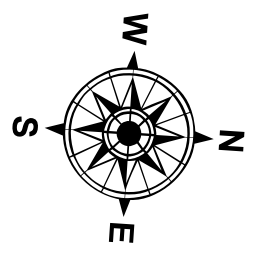


	CURVE 2	CURVE 3	CURVE 4
Δ	25 24'14"	12 12'36"	31 50'37"
D	01'00'00"	00 58'36"	01'05'46"
R	5729.58'	5866.46'	5227.04'
T	1291.43'	627.46'	1491.12'
L	2540.40'	1250.13'	2905.15'



LEGEND

- - - Federal Navigation Channel
- Cable Area
- Borrow Area
- -4' and above
- Federal Navigation Center Line
- Placement Area
- Shoalest Sounding**
- -4' to -8'
- As-built Pipeline/Cable
- Anchorage Area
- ★ Beacon, General
- -8' to -10'
- - - Unconfirmed Pipeline/Cable
- ✕ Obstruction Point
- ♦ Red Navigation Buoy
- -10' to -12'
- Project Depth Contour
- ⚓ Wrecks-Submerged
- ♦ Green Navigation Buoy
- -12' to -16'
- -16' and below



Gage Reading: DM: 5.78 MLG
 Sea Conditions: CALM
 Vessel Name: MV 167
 Survey Type: CONDITION
 Sounding Frequency***: LOW

NOTES:
 Horizontal Coordinate System: North American Datum of 1983 (NAD83), projected to the State Plane Coordinate System (SPCS), Louisiana South Zone. Distance units in U.S. Survey Feet.
 Vertical Datum: Soundings are shown in feet and indicate depths below Mean Low Gulf Datum (MLG). Datum relationships as of 01 May 2013: 0.0' MLLW (2002-2006) = 0.0' NAVD83 (2009.55) = 3.5' MLG
 Distances on the Mississippi River, above and below Head of Passes are shown at 1 mile intervals.
 The location of navigation aids are base on and provided by the U.S. Coast Guard.
 2013 Aerial Photography data source: GEOCLIP, Atlantic Group, LLC.
 Reference is N.O.A.A. Navigation Chart No. 11353.
 ** Shoalest Sounding per Quarter per Reach.
 *** High frequency (200 kHz) survey data represents the first signal return at a sounding location and will include suspended solids, known as "fluff", if present. Low frequency (20 kHz) survey data normally penetrates through this "fluff" layer to depict elevations of consolidated bottom material. Low frequency accuracies may vary depending on channel conditions and fathometer settings.



DISCLAIMER: The data represented on this map is the result of a data collection project for a specific US Army Corps of Engineers project. It is not intended for any other purpose. The user is responsible for the accuracy, reliability, or suitability of the data for any particular purpose. The user is responsible for the accuracy, reliability, or suitability of the data for any particular purpose. The user is responsible for the accuracy, reliability, or suitability of the data for any particular purpose. The user is responsible for the accuracy, reliability, or suitability of the data for any particular purpose.

Submitted:	Checked By:
Recommended:	Checked By:
Approved:	Checked By:

U.S. ARMY CORPS OF ENGINEERS
 NEW ORLEANS DISTRICT

**MISS. RIVER OUTLETS AT VENICE
 BAPTISTE COLLETTE
 OV_02_BAP_20160902
 02 September 2016**

**Sheet Reference Number
 2 of 3**