

Accession: The data represents the results of data collection processing for a specific US Army Corps of Engineers project. The user is responsible for the results, accuracy, and reliability of the data for other than its intended purpose. The user is responsible for the results, accuracy, and reliability of the data for other than its intended purpose.

Date: The data was collected on 07 December 2016. The data is subject to change due to several factors including but not limited to dredging activities, channel migration, and changes in bathymetry. The user is responsible for the results, accuracy, and reliability of the data for other than its intended purpose.

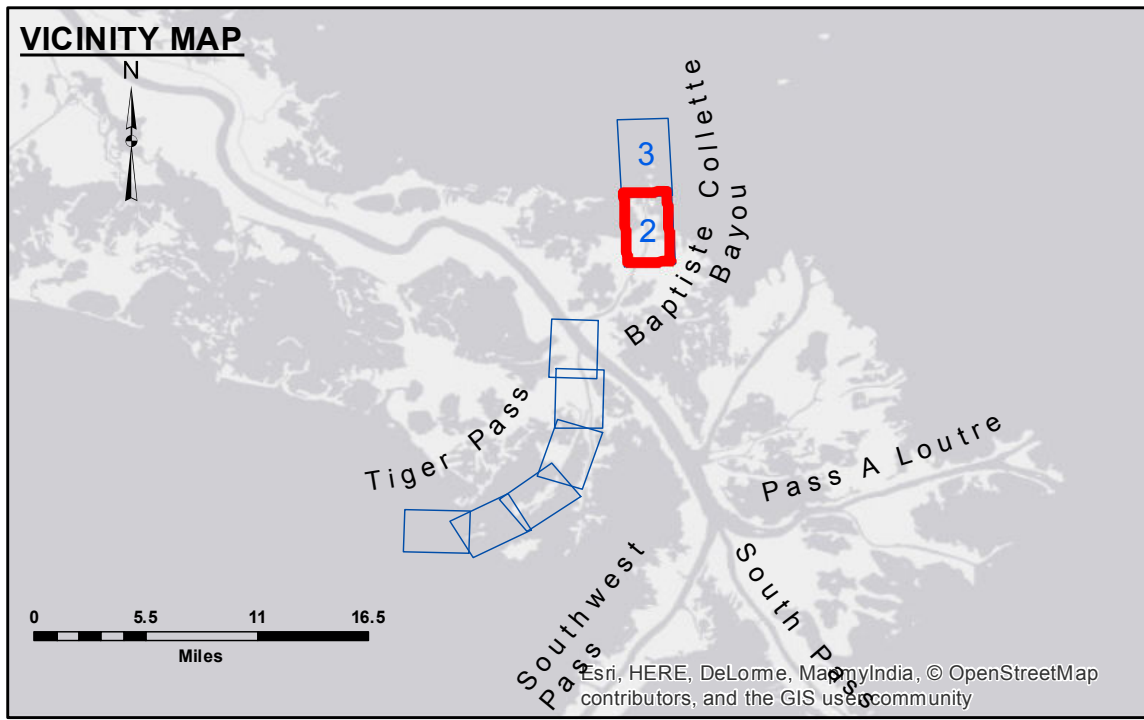
Disclaimer: The information depicted on this map represents the results of a survey conducted on the ground. It is not intended to be used for any purpose other than that for which it was collected. The user is responsible for the results, accuracy, and reliability of the data for other than its intended purpose.

Submitted:	Checked By:
Recommended:	Checked By:
Approved:	Checked By:
Surveyed By:	Plotted By:
SPPM	AO

U.S. ARMY CORPS OF ENGINEERS
NEW ORLEANS DISTRICT

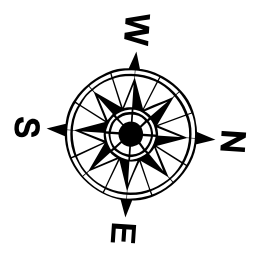
CV CURVE DATA SUMMARY

	CURVE 2	CURVE 3	CURVE 4
Δ	2524.14"	1212.36"	3150.37"
D	0100.00"	0058.36"	0105.46"
R	5729.58'	5866.46'	5227.04'
T	1291.43'	627.46'	1491.12'
L	2540.40'	1250.13'	2905.15'

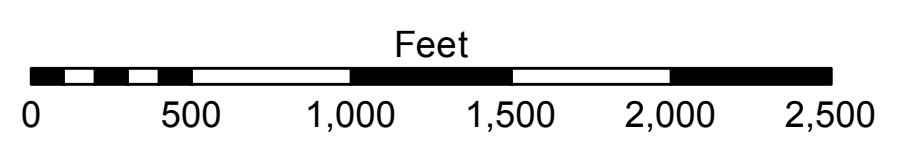


LEGEND

--- Federal Navigation Channel	○ Cable Area	■ Borrow Area	■ -4' and above
— Federal Navigation Center Line	■ Placement Area	● Shoalest Sounding**	■ -4' to -8'
— As-built Pipeline/Cable	□ Anchorage Area	☆ Beacon, General	■ -8' to -10'
..... Unconfirmed Pipeline/Cable	⊗ Obstruction Point	♦ Red Navigation Buoy	■ -10' to -12'
— Project Depth Contour	⚓ Wrecks-Submerged	♦ Green Navigation Buoy	■ -12' to -16'
			■ -16' and below



Gage Reading: DM16: 3.8 MLG
 Sea Conditions: CHOPPY; 1-2'
 Vessel Name: OB-167
 Survey Type: CONDITION
 Sounding Frequency***: LOW



NOTES:

Horizontal Coordinate System:
 North American Datum of 1983 (NAD83), projected to the State Plane Coordinate System (SPCS), Louisiana South Zone. Distance units in U.S. Survey Feet.

Vertical Datum:
 Soundings are shown in feet and indicate depths below Mean Low Gulf Datum (MLG).
 Datum relationships as of 01 May 2013:
 0.0' MLLW (2002-2006) = 0.0' NAVD88 (2009.55) = 3.5' MLG

Distances on the Mississippi River, above and below Head of Passes are shown at 1 mile intervals.

The location of navigation aids are base on and provided by the U.S. Coast Guard.

2016 Aerial Photography data source: Precision Aerial Reconnaissance LLC, 1998 imagery in transparent green.

Reference is N.O.A. Navigation Chart No. 11353.

** Shoalest Sounding per Quarter per Reach.

*** High frequency (200 kHz) survey data represents the first signal return at a sounding location and will include suspended solids, known as "fluff", if present. Low frequency (20 kHz) survey data normally penetrates through this "fluff" layer to depict elevations of consolidated bottom material. Low frequency accuracies may vary depending on channel conditions and fathometer settings.

MISS. RIVER OUTLETS AT VENICE
 BAPTISTE COLLETTE
 OV_02_BAP_20161207
 07 December 2016

Sheet Reference Number
 2 of 3