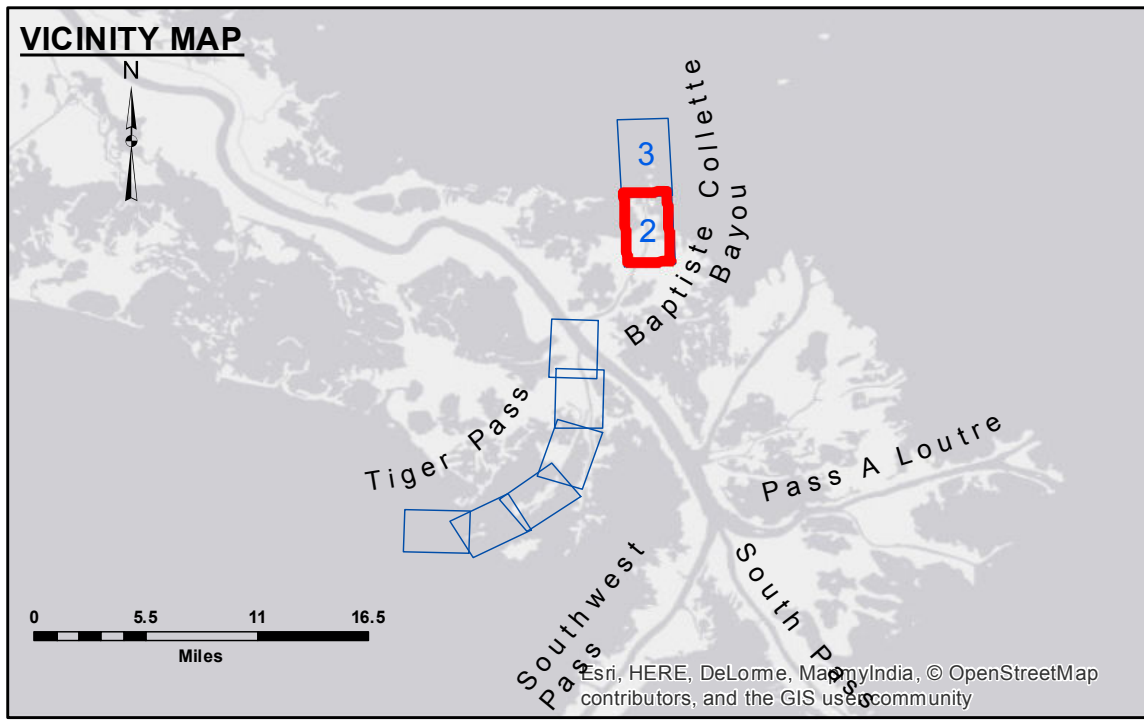


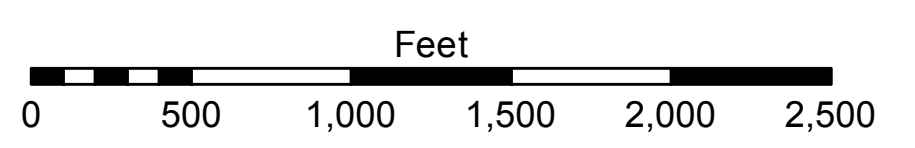
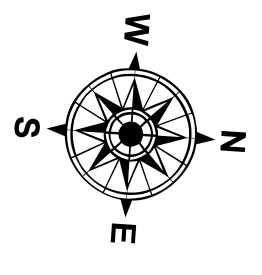
Curve Data Summary

	Curve 2	Curve 3	Curve 4
Δ	25°24'14"	12°12'36"	31°50'37"
D	01°00'00"	00°58'36"	01°05'46"
R	5729.58'	5866.46'	5227.04'
T	1291.43'	627.46'	1491.12'
L	2540.40'	1250.13'	2905.15'



LEGEND

- Federal Navigation Channel
- Federal Navigation Center Line
- As-built Pipeline/Cable
- Unconfirmed Pipeline/Cable
- Project Depth Contour
- Cable Area
- Placement Area
- Anchorage Area
- ⊗ Obstruction Point
- ✶ Wrecks-Submerged
- Borrow Area
- Shoalest Sounding**
- ☆ Beacon, General
- ◆ Red Navigation Buoy
- ◆ Green Navigation Buoy
- -4' and above
- -4' to -8'
- -8' to -10'
- -10' to -12'
- -12' to -16'
- -16' and below



Gage Reading: DM 16: 4.4 MLG
 Sea Conditions: CALM
 Vessel Name: OB-167
 Survey Type: CONDITION
 Sounding Frequency***: LOW

NOTES:
 Horizontal Coordinate System:
 North American Datum of 1983 (NAD83), projected to the State Plane Coordinate System (SPCS), Louisiana South Zone. Distance units in U.S. Survey Feet.
 Vertical Datum:
 Soundings are shown in feet and indicate depths below Mean Low Gulf Datum (MLG). Datum relationships as of 01 May 2013:
 0.0' MLLW (2002-2006) = 0.0' NAVD88 (2009.55) = 3.5' MLG
 Distances on the Mississippi River, above and below Head of Passes are shown at 1 mile intervals.
 The location of navigation aids are based on and provided by the U.S. Coast Guard.
 2016 Aerial Photography data source: Precision Aerial Reconnaissance LLC, 1998 imagery in transparent green.
 Reference is N.O.A. Navigation Chart No. 11353.
 ** Shoalest Sounding per Quarter per Reach.
 *** High frequency (200 kHz) survey data represents the first signal return at a sounding location and will include suspended solids, known as "fluff", if present. Low frequency (20 kHz) survey data normally penetrates through this "fluff" layer to depict elevations of consolidated bottom material. Low frequency accuracies may vary depending on channel conditions and fathometer settings.



Access/Availability: The United States Government furnishes these data and the recipient accepts and uses them with the express understanding that they are for official use only and that they are not to be distributed, reproduced, or modified in any way without the express written consent of the United States Government. The user is responsible for the results obtained from the use of these data. The application of the data for other than its intended purpose is not warranted. Hydrographic survey data is subject to change rapidly due to several factors including but not limited to dredging operations, channel migration, and other factors. The user is responsible for the results obtained from the use of these data. The application of the data for other than its intended purpose is not warranted. The information depicted on this map represents the results of a survey conducted on the ground and is not to be considered as a representation of the general condition existing at that time.

U.S. ARMY CORPS OF ENGINEERS
NEW ORLEANS DISTRICT

Submitted:	Surveyed By: SPPM
Recommended: Chief, Survey Section	Plotted By: AO
Approved: Chief, Waterways Maintenance Section	Checked By: AC

**MISS. RIVER OUTLETS AT VENICE
 BAPTISTE COLLETTE, MI. 4.0 TO 7.8
 OV_02_BAP_20170630_CS
 30 June 2017**

**Sheet Reference Number
 2 of 3**

Revision Number:
 1.13-20160811