

**C/L CURVE DATA SUMMARY**

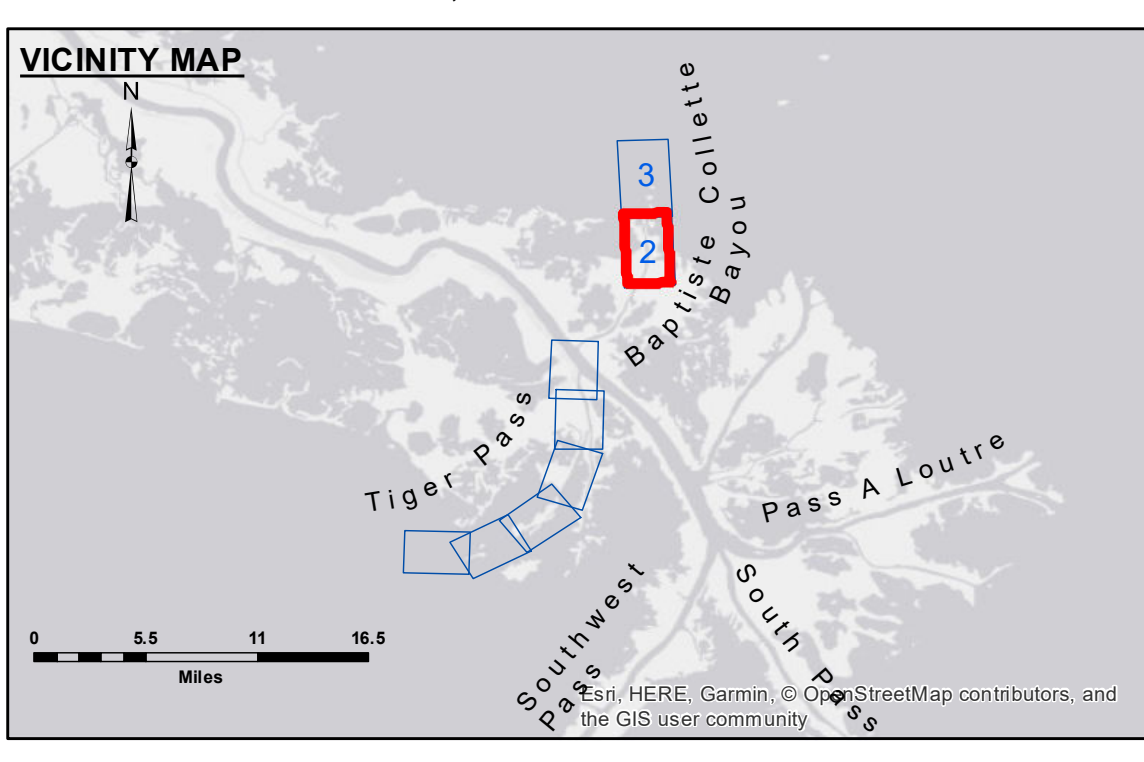
	2	3	4
Δ	25°24'14"	12°12'36"	31°50'37"
D	01°00'00"	00°58'36"	01°05'46"
R	5729.58'	5866.48'	5227.04'
T	1291.43'	627.46'	1491.12'
L	2540.40'	1250.13'	2905.15'

**ACCESS**  
 Distribution Liability: The data represents the results of data collection processing for a specific US Army Corps of Engineers project. It is only valid for its intended use, control, time and accuracy specifications. The user is responsible for the results. The application of the data for other than its intended purpose is at the user's risk. Hydrographic survey data is subject to change due to several factors including but not limited to dredging, accretion, erosion, and other natural forces. The user should verify the hydrographic conditions when developing the data of a project. The information depicted on this map represents the results of a project. The general condition existing at that time is considered to represent the general condition existing at that time.

**DISCLAIMER**  
 The United States Government furnishes these data and the recipient accepts and uses them with the express understanding that the data are not guaranteed in any way as to reliability, usability or suitability for any particular purpose of the recipient. The user is responsible for the accuracy, completeness, timeliness, or applicability of the data for other than its intended purpose. The user is responsible for the results of the use of the data. The user is not liable for any use of the data under any conditions. The user is not liable for any use of the data under any conditions. The user is not liable for any use of the data under any conditions. The user is not liable for any use of the data under any conditions.

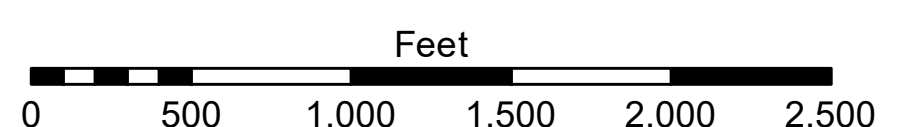
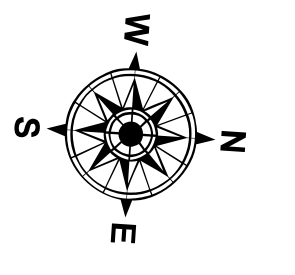
U.S. ARMY CORPS OF ENGINEERS  
 NEW ORLEANS DISTRICT

Submitted:	Surveyed By:
Recommended:	RYLAND/HOSHMAN
Approved:	Checked By:
	AO
	AO



**LEGEND**

--- Federal Navigation Channel	• Cable Area	□ Borrow Area	■ -4' and above
— Federal Navigation Center Line	□ Placement Area	● Shoalest Sounding**	■ -4' to -8'
— As-built Pipeline/Cable	□ Anchorage Area	☆ Beacon, General	■ -8' to -10'
..... Unconfirmed Pipeline/Cable	⊗ Obstruction Point	♦ Red Navigation Buoy	■ -10' to -12'
— Project Depth Contour	⚓ Wrecks-Submerged	♦ Green Navigation Buoy	■ -12' to -16'
			■ -16' and below



**NOTES:**  
 Horizontal Coordinate System: North American Datum of 1983 (NAD83), projected to the State Plane Coordinate System (SPCS), Louisiana South Zone. Distance units in U.S. Survey Feet.  
 Vertical Datum: Soundings are shown in feet and indicate depths below Mean Low Gulf Datum (MLG). Datum relationships as of 01 May 2013: 0.0' MLLW (2002-2006) = 0.0' NAVD88 (2009.55) = 3.5' MLG.  
 Distances on the Mississippi River, above and below Head of Passes are shown at 1 mile intervals.  
 The location of navigation aids are based on and provided by the U.S. Coast Guard.  
 2018 Aerial Photography data source: Precision Aerial Reconnaissance LLC.

**MISS. RIVER OUTLETS AT VENICE  
 BAPTISTE COLLETTE, MI. 4.0 TO 7.8  
 OV\_02\_BAP\_20180912\_CS  
 12 September 2018**

**Sheet Reference Number  
 2 of 3**

Reference is N.O.A. Navigation Chart No. 11353.  
 \*\* Shoalest Sounding per Quarter per Reach.  
 \*\*\* High frequency (200 kHz) survey data represents the first signal return at a sounding location and will include suspended solids, known as "fluff", if present. Low frequency (20 kHz) survey data normally penetrates through this "fluff" layer to depict elevations of consolidated bottom material. Low frequency accuracies may vary depending on channel conditions and fathometer settings.