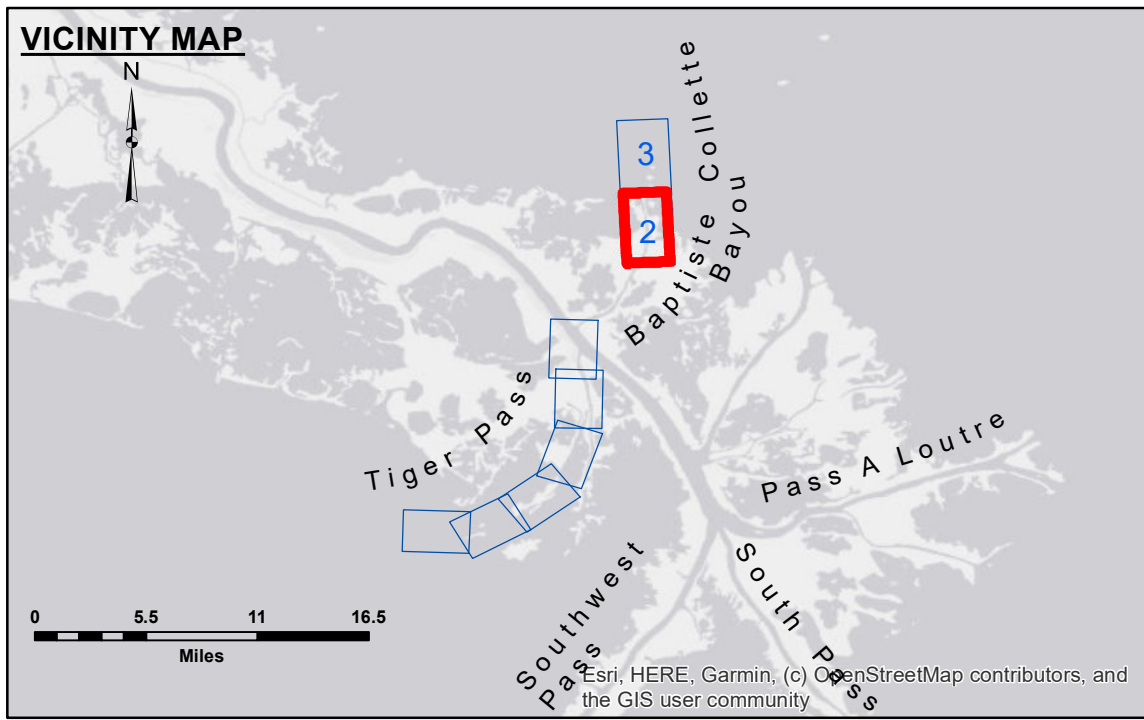


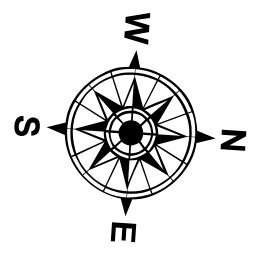
**C/L CURVE DATA SUMMARY**

	CURVE 2	CURVE 3	CURVE 4
Δ	25 24'14"	12 12'36"	31 50'37"
D	01 00'00"	00 58'36"	01 05'46"
R	5729.58'	5866.46'	5227.04'
T	1291.43'	627.46'	1491.12'
L	2540.40'	1250.13'	2905.15'



**LEGEND**

--- Federal Navigation Channel	○ Cable Area	□ Borrow Area	■ -4' and above
— Federal Navigation Center Line	□ Placement Area	● Shoalest Sounding**	■ -4' to -8'
— As-built Pipeline/Cable	□ Anchorage Area	★ Beacon, General	■ -8' to -10'
..... Unconfirmed Pipeline/Cable	⊗ Obstruction Point	◆ Red Navigation Buoy	■ -10' to -12'
— Project Depth Contour	⚓ Wrecks-Submerged	◆ Green Navigation Buoy	■ -12' to -16'
			■ -16' and below



Gage Reading: DM 16: 4.37 MLG  
 Sea Conditions: SMOOTH  
 Vessel Name: OB189  
 Survey Type: AD  
 Sounding Frequency\*\*\*: LOW

0 500 1,000 1,500 2,000 2,500  
 Feet

**NOTES:**  
 Horizontal Coordinate System:  
 North American Datum of 1983 (NAD83), projected to the State Plane  
 Coordinate System (SPCS), Louisiana South Zone. Distance units in U.S. Survey Feet.  
 Vertical Datum:  
 Soundings are shown in feet and indicate depths below Mean Low Gulf Datum (MLG).  
 Datum relationships as of 01 May 2013:  
 0.0' MLLW (2002-2006) = 0.0' NAVD88 (2009.55) = 3.5' MLG  
 Distances on the Mississippi River, above and below Head of Passes are shown  
 at 1 mile intervals.  
 The location of navigation aids are base on and provided by the U.S. Coast Guard.  
 2018 Aerial Photography data source: Precision Aerial Reconnaissance LLC.



**DISCLAIMER:**  
 Distribution Liability: The data represents the results of data collection for a specific US Army Corps of Engineers project. It is only valid for its intended use, content, time and accuracy specifications. The user is responsible for the results and any application of the data for other than its intended purpose. Data Constants: Hydrographic survey data is subject to change rapidly due to several factors including but not limited to dredging, shoaling, and other changes in the hydrographical conditions when developed after the date of the survey. The US Army Corps of Engineers accepts no responsibility for changes in the hydrographical conditions when developed after the date of the survey. The user is responsible for the results of the data when used for purposes other than those intended. The user is responsible for the results of the data when used for purposes other than those intended. The user is responsible for the results of the data when used for purposes other than those intended.

U.S. ARMY CORPS OF ENGINEERS  
 NEW ORLEANS DISTRICT

Submitted:	Surveyed By: DJS/DR	Placed By: AC	Checked By: AC
Recommended:	Chief, Survey Section		
Approved:	Chief, Waterways Maintenance Section		

**MISS. RIVER OUTLETS AT VENICE  
 BAPTISTE COLLETTE, MI. 4.0 TO 7.8  
 OV\_02\_BAP\_20200311\_AD  
 11 March 2020**

**Sheet Reference Number  
 2 of 3**

Revision Number:  
 410-210-10102