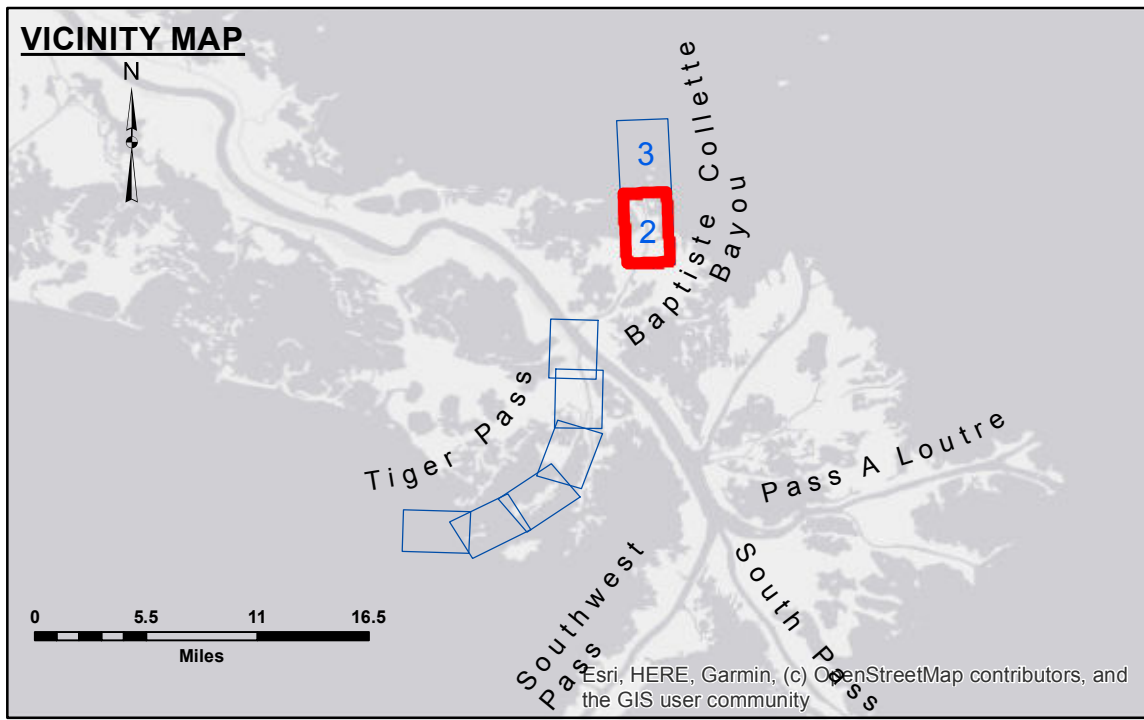


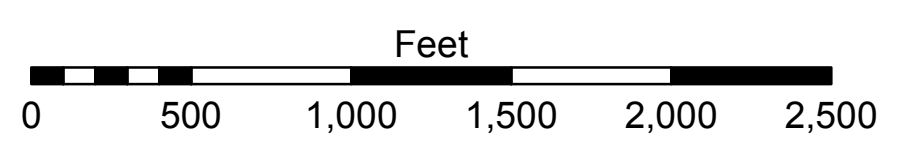
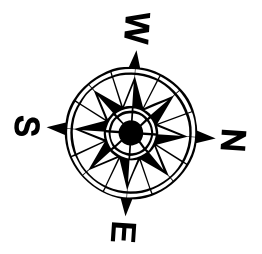
C/L CURVE DATA SUMMARY

	CURVE 2	CURVE 3	CURVE 4
Δ	25°24'14"	12°12'36"	31°50'37"
D	01°00'00"	00°58'36"	01°05'46"
R	5729.58'	5866.46'	5227.04'
T	1291.43'	827.46'	1491.12'
L	2540.40'	1250.13'	2905.15'



LEGEND

- Federal Navigation Channel
- Federal Navigation Center Line
- As-built Pipeline/Cable
- Unconfirmed Pipeline/Cable
- Project Depth Contour
- Cable Area
- Placement Area
- Anchorage Area
- ⊗ Obstruction Point
- ✦ Wrecks-Submerged
- Borrow Area
- Shoalest Sounding**
- ★ Beacon, General
- ◆ Red Navigation Buoy
- ◆ Green Navigation Buoy
- -4' and above
- -4' to -8'
- -8' to -10'
- -10' to -12'
- -12' to -16'
- -16' and below



Gage Reading: 5.37 MLG @ DM 16 @ 0930
 Sea Conditions: CALM
 Vessel Name: BLANCHARD
 Survey Type: CONDITION, SB
 Sounding Frequency***: LOW

NOTES:
 Horizontal Coordinate System:
 North American Datum of 1983 (NAD83), projected to the State Plane Coordinate System (SPCS), Louisiana South Zone. Distance units in U.S. Survey Feet.
 Vertical Datum:
 Soundings are shown in feet and indicate depths below Mean Low Gulf Datum (MLG). Datum relationships as of 01 May 2013:
 0.0' MLLW (2002-2006) = 0.0' NAVD88 (2009.55) = 3.5' MLG
 Distances on the Mississippi River, above and below Head of Passes are shown at 1 mile intervals.
 The location of navigation aids are base on and provided by the U.S. Coast Guard.
 2018 Aerial Photography data source: Precision Aerial Reconnaissance LLC.

Reference is N.O.A. Navigation Chart No. 11353.
 ** Shoalest Sounding per Quarter per Reach.
 *** High frequency (200 kHz) survey data represents the first signal return at a sounding location and will include suspended solids, known as "fluff", if present. Low frequency (20 kHz) survey data normally penetrates through this "fluff" layer to depict elevations of consolidated bottom material. Low frequency accuracies may vary depending on channel conditions and fathometer settings.



DISCLAIMER:
 The data represented on this map is the result of a survey conducted for a specific purpose. The user is responsible for the accuracy, completeness, and reliability of the data for any purpose other than that for which it was collected. The user is responsible for the accuracy, completeness, and reliability of the data for any purpose other than that for which it was collected. The user is responsible for the accuracy, completeness, and reliability of the data for any purpose other than that for which it was collected. The user is responsible for the accuracy, completeness, and reliability of the data for any purpose other than that for which it was collected.

U.S. ARMY CORPS OF ENGINEERS
 NEW ORLEANS DISTRICT

Submitted:	Surveyed By: LLB & DRD
Recommended:	Plotted By: TSS
Approved:	Checked By: MSK

MISS. RIVER OUTLETS AT VENICE
BAPTISTE COLLETTE, MI. 4.0 TO 7.8
OV_02_BAP_20200917_CS_POSTSTORM_PRO
 17 September 2020

Sheet Reference Number
2 of 3