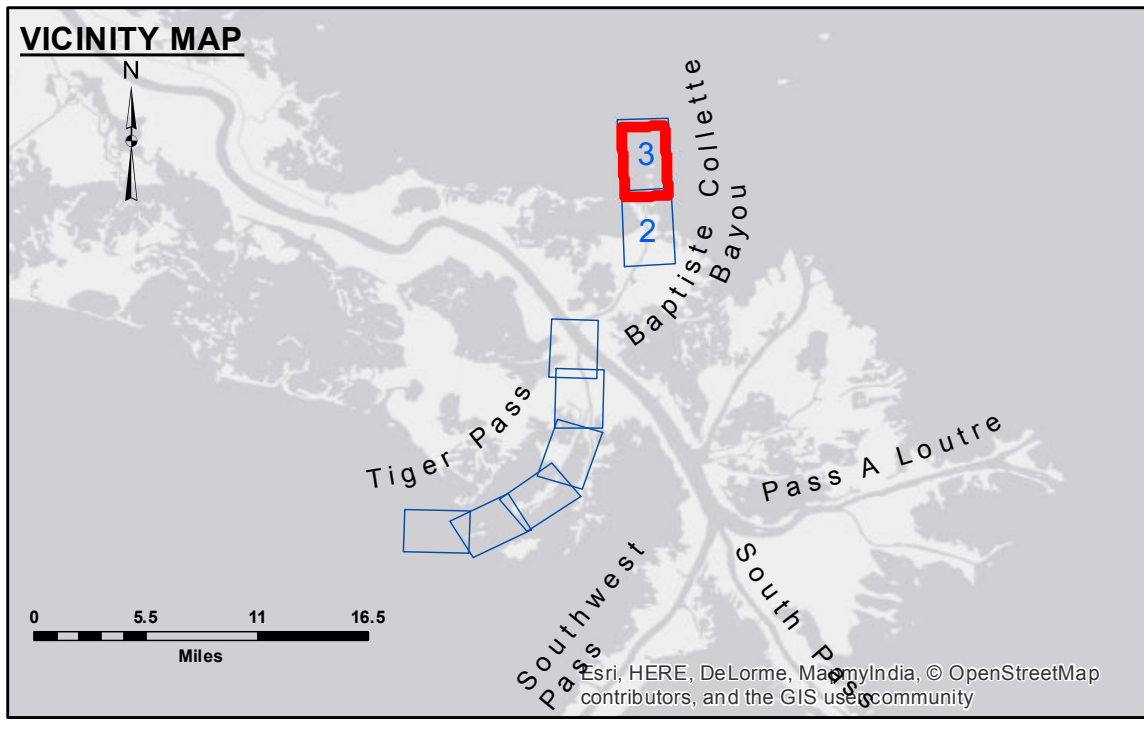


DISCLAIMER
 The United States Government furnishes these data and the recipient accepts and uses them with the express understanding that the data are not warranted for any purpose other than that for which they were originally collected. The user is responsible for the reliability, usability or suitability for any particular purpose of the data. The user shall indemnify and hold the United States Government harmless from and against all claims, damages, losses and expenses, including reasonable attorneys' fees, incurred by the United States Government as a result of the use of the data for any purpose other than that for which they were originally collected. The information depicted on this map represents the results of a survey conducted on the date indicated and is not intended to represent the general condition existing at that time.

Submitted:	Surveyed By: SPPM
Recommended: Chief Survey Section	Plotted By: BITD
Approved: Chief Waterways Maintenance Section	Checked By: JIB

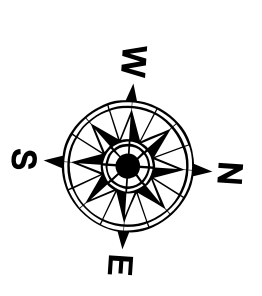
**MISS. RIVER OUTLETS AT VENICE
 BAPTISTE COLLETTE
 OV_03_BAP_20150224
 24 February 2015**

**Sheet
 Reference
 Number
 3 of 3**

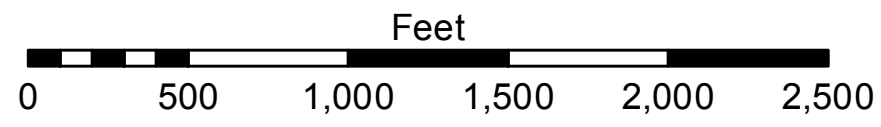


LEGEND

- - - Federal Navigation Channel	○ Cable Area	□ Borrow Area
— Federal Navigation Center Line	■ Placement Area	● Shoalest Sounding**
— As-built Pipeline/Cable	□ Anchorage Area	☆ Beacon, General
..... Unconfirmed Pipeline/Cable	⊗ Obstruction Point	◆ Red Navigation Buoy
— Project Depth Contour	⚓ Wrecks-Submerged	◆ Green Navigation Buoy
		■ -12' and above
		■ -12' to -14'
		■ -14' to -16'
		■ -16' and below



Gage Reading: DM 16: 4.3 MLG AVG.
 Sea Conditions: CHOPPY
 Vessel Name: OB-167
 Survey Type: CONDITION
 Sounding Frequency***: LOW



NOTES:
 Horizontal Coordinate System: North American Datum of 1983 (NAD83), projected to the State Plane Coordinate System (SPCS), Louisiana South Zone. Distance units in U.S. Survey Feet.
 Vertical Datum: Soundings are shown in feet and indicate depths below Mean Low Gulf Datum (MLG). Datum relationships as of 01 May 2013: 0.0' MLLW (2002-2006) = 0.0' NAVD88 (2009.55) = 3.5' MLG
 Distances on the Mississippi River, above and below Head of Passes are shown at 1 mile intervals.
 The location of navigation aids are base on and provided by the U.S. Coast Guard.
 2013 Aerial Photography data source: GEOCLIP, Atlantic Group, LLC.
 Reference is N.O.A. Navigation Chart No. 11353.
 ** Shoalest Sounding per Quarter per Reach.
 *** High frequency (200 kHz) survey data represents the first signal return at a sounding location and will include suspended solids, known as "fluff", if present. Low frequency (20 kHz) survey data normally penetrates through this "fluff" layer to depict elevations of consolidated bottom material. Low frequency accuracies may vary depending on channel conditions and fathometer settings.