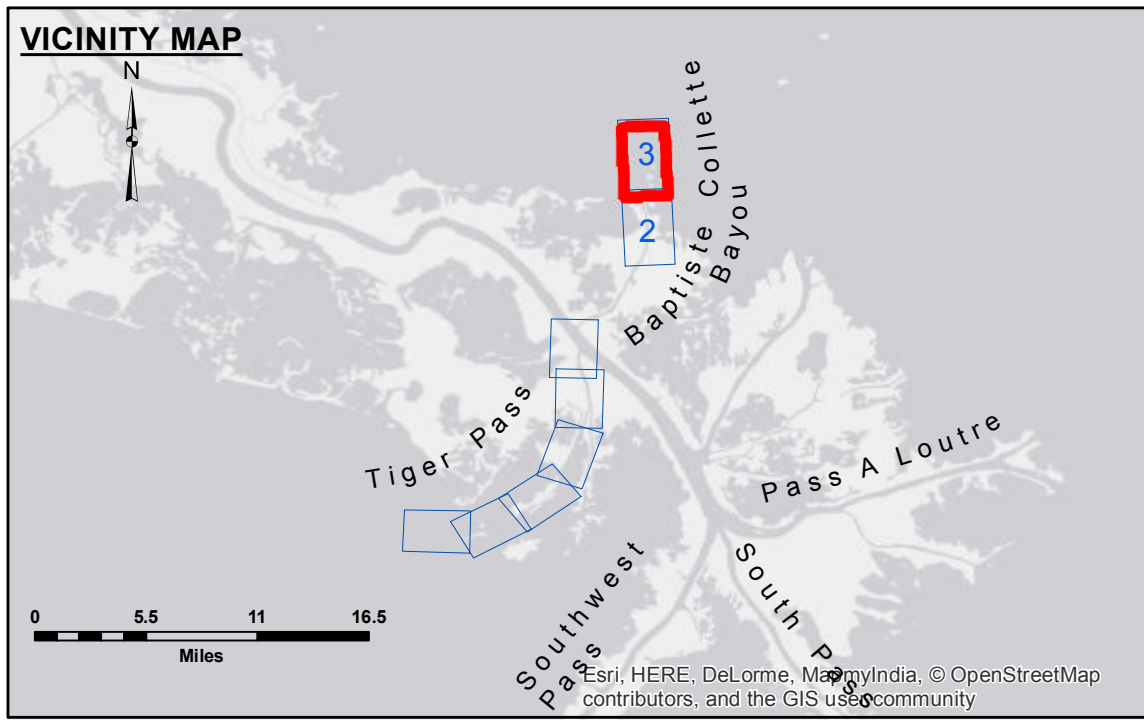


DISCLAIMER: The data represents the results of data collection/processing for a specific US Army Corps of Engineers project. It is not intended for use in any other project or application. The user is responsible for the results and accuracy of the data. The application of the data for other than its intended purpose is not supported. The user is responsible for the results and accuracy of the data. The application of the data for other than its intended purpose is not supported. The user is responsible for the results and accuracy of the data. The application of the data for other than its intended purpose is not supported.

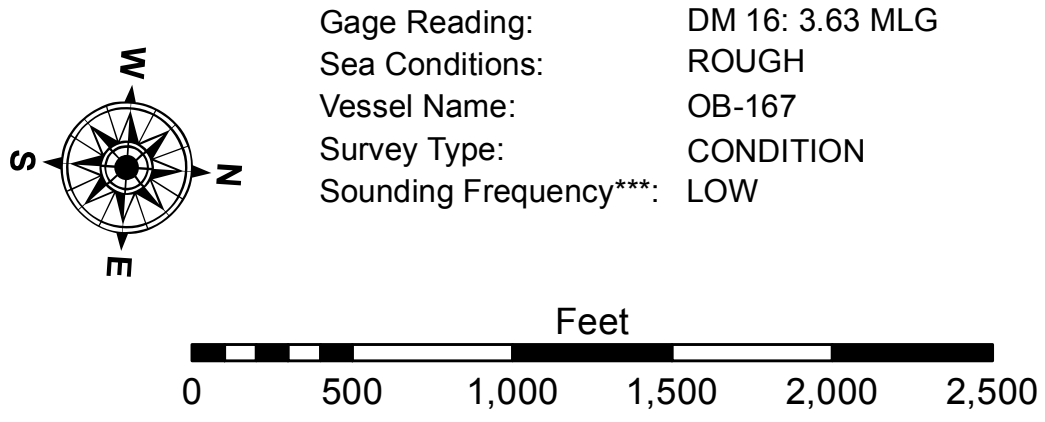
ACCESS: The United States Government furnishes these data and the recipient accepts and uses them with the express understanding that the data are not to be used for any purpose other than that for which they were provided. The recipient may not reproduce, distribute, or disseminate these data, in whole or in part, for any purpose other than that for which they were provided. The recipient may not use these data to claim any liability or to make any claim against the United States Government. The recipient may not use these data to claim any liability or to make any claim against the United States Government. The recipient may not use these data to claim any liability or to make any claim against the United States Government.

U.S. ARMY CORPS OF ENGINEERS NEW ORLEANS DISTRICT		
Submitted:	Surveyed By: SP, PM	Plotted By: BITD
Recommended:	Chief, Survey Section	Checked By: JIB
Approved:	Chief, Waterways Maintenance Section	

**MISS. RIVER OUTLETS AT VENICE
BAPTISTE COLLETTE
OV_03_BAP_20151016
16 October 2015**



LEGEND			
--- Federal Navigation Channel	○ Cable Area	□ Borrow Area	■ -4' and above
— Federal Navigation Center Line	▭ Placement Area	● Shoalest Sounding**	■ -4' to -8'
— As-built Pipeline/Cable	□ Anchorage Area	☆ Beacon, General	■ -8' to -10'
..... Unconfirmed Pipeline/Cable	⊗ Obstruction Point	◆ Red Navigation Buoy	■ -10' to -12'
— Project Depth Contour	⊙ Wrecks-Submerged	◆ Green Navigation Buoy	■ -12' to -16'
			■ -16' and below



NOTES:
 Horizontal Coordinate System: North American Datum of 1983 (NAD83), projected to the State Plane Coordinate System (SPCS), Louisiana South Zone. Distance units in U.S. Survey Feet.
 Vertical Datum: Soundings are shown in feet and indicate depths below Mean Low Gulf Datum (MLG). Datum relationships as of 01 May 2013: 0.0' MLLW (2002-2006) = 0.0' NAVD83 (2009.55) = 3.5' MLG
 Distances on the Mississippi River, above and below Head of Passes are shown at 1 mile intervals.
 The location of navigation aids are base on and provided by the U.S. Coast Guard.
 2013 Aerial Photography data source: GEOCLIP, Atlantic Group, LLC.
 Reference is N.O.A. Navigation Chart No. 11353.
 ** Shoalest Sounding per Quarter per Reach.
 *** High frequency (200 kHz) survey data represents the first signal return at a sounding location and will include suspended solids, known as "fluff", if present. Low frequency (20 kHz) survey data normally penetrates through this "fluff" layer to depict elevations of consolidated bottom material. Low frequency accuracies may vary depending on channel conditions and fathometer settings.

**Sheet Reference Number
3 of 3**

Revision Number:
3.8.0-20150202