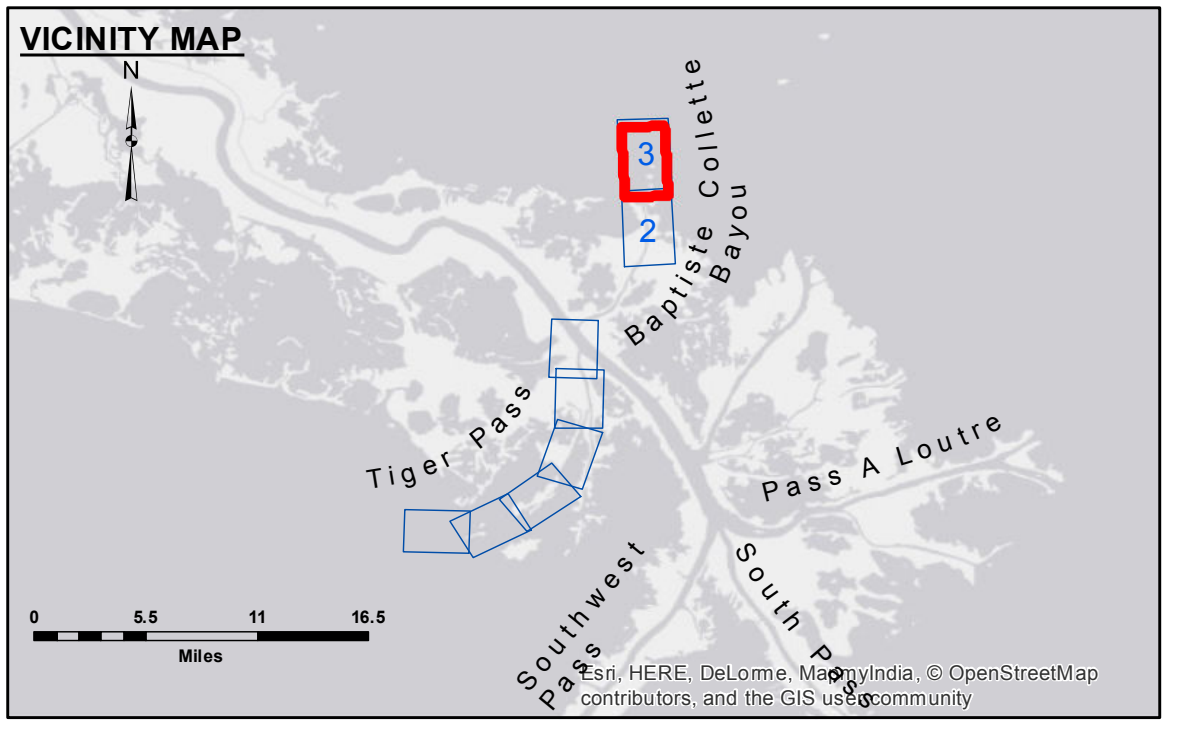


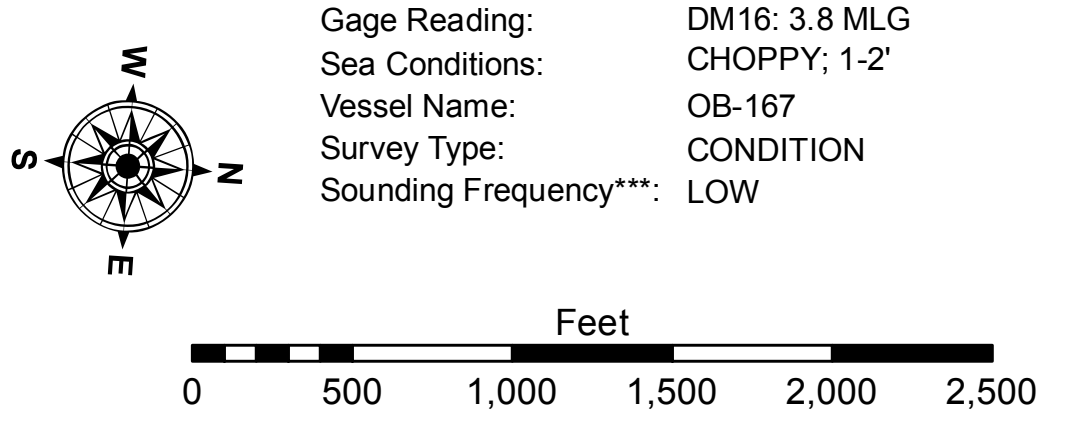
**DISCLAIMER:** The data represents the results of data collection performed for a specific US Army Corps of Engineers project and is only valid for its intended use, control, time and accuracy specifications. The user is responsible for the results and accuracy of the data for other than its intended purpose. The application of the data for other than its intended purpose is at the user's risk. Hydrographic survey data is subject to change due to several factors including but not limited to dredging, sedimentation, and channel migration. The user is responsible for the accuracy of the data and should not rely solely on this data for navigation purposes. The information depicted on this map represents the results of a survey conducted on the date indicated and is not intended to represent the general condition existing at that time.

U.S. ARMY CORPS OF ENGINEERS NEW ORLEANS DISTRICT	
Submitted:	Surveyed By: SPPM
Recommended: Chief Survey Section	Plotted By: AO
Approved: Chief Waterways Maintenance Section	Checked By: AO

**MISS. RIVER OUTLETS AT VENICE  
BAPTSTE COLLETTE  
OV\_03\_BAP\_20161207  
07 December 2016**



LEGEND			
--- Federal Navigation Channel	○ Cable Area	□ Borrow Area	■ -4' and above
— Federal Navigation Center Line	□ Placement Area	● Shoalest Sounding**	■ -4' to -8'
— As-built Pipeline/Cable	□ Anchorage Area	★ Beacon, General	■ -8' to -10'
..... Unconfirmed Pipeline/Cable	⊗ Obstruction Point	◆ Red Navigation Buoy	■ -10' to -12'
— Project Depth Contour	⊙ Wrecks-Submerged	◆ Green Navigation Buoy	■ -12' to -16'
			■ -16' and below



**NOTES:**  
Horizontal Coordinate System: North American Datum of 1983 (NAD83), projected to the State Plane Coordinate System (SPCS), Louisiana South Zone. Distance units in U.S. Survey Feet.  
Vertical Datum: Soundings are shown in feet and indicate depths below Mean Low Gulf Datum (MLG). Datum relationships as of 01 May 2013: 0.0' MLLW (2002-2006) = 0.0' NAVD88 (2009.55) = 3.5' MLG  
Distances on the Mississippi River, above and below Head of Passes are shown at 1 mile intervals.  
The location of navigation aids are base on and provided by the U.S. Coast Guard.  
2016 Aerial Photography data source: Precision Aerial Reconnaissance LLC. 1998 imagery in transparent green.  
Reference is N.O.A.A. Navigation Chart No. 11353.  
\*\* Shoalest Sounding per Quarter per Reach.  
\*\*\* High frequency (200 kHz) survey data represents the first signal return at a sounding location and will include suspended solids, known as "fluff", if present. Low frequency (20 kHz) survey data normally penetrates through this "fluff" layer to depict elevations of consolidated bottom material. Low frequency accuracies may vary depending on channel conditions and fathometer settings.

**Sheet Reference Number  
3 of 3**