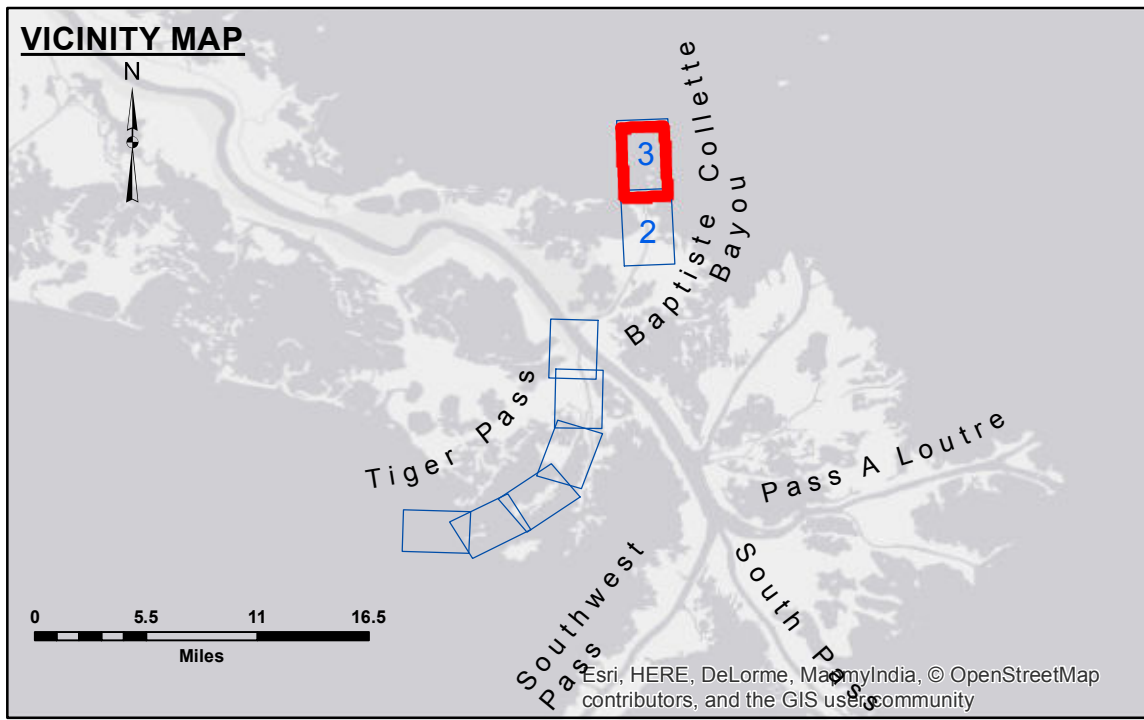


Accession
 The United States Government furnishes these data and the recipient accepts and uses them with the express understanding that the data are not to be used for any purpose other than that for which they were prepared, and that the user is responsible for the accuracy, completeness, readability, usability or suitability, for any particular purpose of the data. The user is responsible for the accuracy, completeness, readability, usability or suitability, for any particular purpose of the data. The user is responsible for the accuracy, completeness, readability, usability or suitability, for any particular purpose of the data. The user is responsible for the accuracy, completeness, readability, usability or suitability, for any particular purpose of the data.

Submitted:	Surveyed By: DD.LB
Recommended: Chief, Survey Section	Plotted By: AO
Approved: Chief, Waterways Maintenance Section	Checked By: AO

**MISS. RIVER OUTLETS AT VENICE
 BAPTSTE COLLETTE, MI. 7.8 TO 11.0
 OV_03_BAP_20170912_CS_POSTSTORM
 12 September 2017**



LEGEND

--- Federal Navigation Channel	○ Cable Area	□ Borrow Area	■ -4' and above
— Federal Navigation Center Line	□ Placement Area	● Shoalest Sounding**	■ -4' to -8'
— As-built Pipeline/Cable	□ Anchorage Area	☆ Beacon, General	■ -8' to -10'
..... Unconfirmed Pipeline/Cable	⊗ Obstruction Point	◆ Red Navigation Buoy	■ -10' to -12'
— Project Depth Contour	⚓ Wrecks-Submerged	◆ Green Navigation Buoy	■ -12' to -16'
			■ -16' and below

Gage Reading: DM 16: 3.2 MLG AVG
 Sea Conditions: CALM
 Vessel Name: OB-173
 Survey Type: CONDITION
 Sounding Frequency***: LOW

NOTES:
 Horizontal Coordinate System:
 North American Datum of 1983 (NAD83), projected to the State Plane
 Coordinate System (SPCS), Louisiana South Zone. Distance units in U.S. Survey Feet.
 Vertical Datum:
 Soundings are shown in feet and indicate depths below Mean Low Gulf Datum (MLG).
 Datum relationships as of 01 May 2013:
 0.0' MLLW (2002-2006) = 0.0' NAVD88 (2009.55) = 3.5' MLG
 Distances on the Mississippi River, above and below Head of Passes are shown
 at 1 mile intervals.
 The location of navigation aids are base on and provided by the U.S. Coast Guard.
 2016 Aerial Photography data source: Precision Aerial Reconnaissance LLC.
 1998 imagery in transparent green.
 Reference is N.O.A.A. Navigation Chart No. 11353.
 ** Shoalest Sounding per Quarter per Reach.
 *** High frequency (200 kHz) survey data represents the first signal return at a sounding
 location and will include suspended solids, known as "fluff", if present. Low frequency (20 kHz)
 survey data normally penetrates through this "fluff" layer to depict elevations of consolidated bottom
 material. Low frequency accuracies may vary depending on channel conditions and fathometer
 settings.