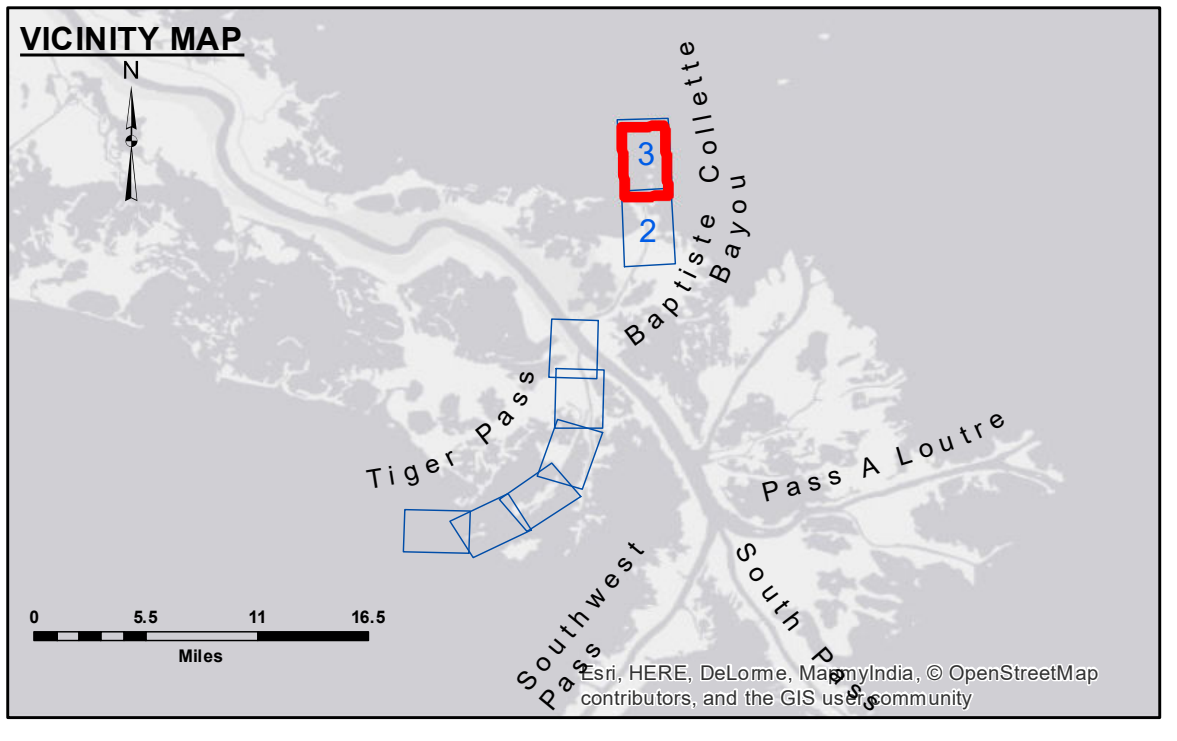


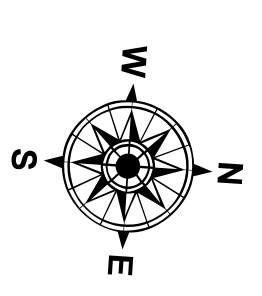
DISCLAIMER: The data represents the results of data collection processing for a specific US Army Corps of Engineers project. It is only valid for its intended use, control, time and accuracy specifications. The user is responsible for the results. The user shall be responsible for the application of the data for other than its intended purpose. Data Contaminants: Hydrographic survey data is subject to change due to several factors including but not limited to dredging, sedimentation, and other factors. The user shall be responsible for changes in the hydrographical conditions when developing after the date of the survey. The user shall be responsible for the accuracy of the data. The user shall be responsible for the accuracy of the data. The user shall be responsible for the accuracy of the data.

U.S. ARMY CORPS OF ENGINEERS NEW ORLEANS DISTRICT		
Submitted:	Surveyed By: DS/JH	Plotted By: BD
Recommended: Chief Survey Section	Checked By: AC	Approved By: AC
Approved: Chief Waterways Maintenance Section		

**MISS. RIVER OUTLETS AT VENICE
BAPTISTE COLLETTE, MI. 7.8 TO 11.0
OV_03_BAP_20180403_AD
03 April 2018**



LEGEND			
--- Federal Navigation Channel	○ Cable Area	□ Borrow Area	■ -4' and above
— Federal Navigation Center Line	□ Placement Area	● Shoalest Sounding**	■ -4' to -8'
— As-built Pipeline/Cable	□ Anchorage Area	☆ Beacon, General	■ -8' to -10'
..... Unconfirmed Pipeline/Cable	⊗ Obstruction Point	◆ Red Navigation Buoy	■ -10' to -12'
— Project Depth Contour	⊗ Wrecks-Submerged	◆ Green Navigation Buoy	■ -12' to -16'
			■ -16' and below



Gage Reading: DM 16: 4.93 MLG
 Sea Conditions: LIGHT
 Vessel Name: OB-189
 Survey Type: CONDITION
 Sounding Frequency***: LOW

0 500 1,000 1,500 2,000 2,500
Feet

NOTES:
 Horizontal Coordinate System:
 North American Datum of 1983 (NAD83), projected to the State Plane
 Coordinate System (SPCS), Louisiana South Zone. Distance units in U.S. Survey Feet.
 Vertical Datum:
 Soundings are shown in feet and indicate depths below Mean Low Gulf Datum (MLG).
 Datum relationships as of 01 May 2013:
 0.0' MLLW (2002-2006) = 0.0' NAVD88 (2009.55) = 3.5' MLG
 Distances on the Mississippi River, above and below Head of Passes are shown
 at 1 mile intervals.
 The location of navigation aids are base on and provided by the U.S. Coast Guard.
 2016 Aerial Photography data source: Precision Aerial Reconnaissance LLC.
 1998 Imagery in transparent green.
 Reference is N.O.A. Navigation Chart No. 11353.
 ** Shoalest Sounding per Quarter per Reach.
 *** High frequency (200 kHz) survey data represents the first signal return at a sounding
 location and will include suspended solids, known as "fluff", if present. Low frequency (20 kHz)
 survey data normally penetrates through this "fluff" layer to depict elevations of consolidated bottom
 material. Low frequency accuracies may vary depending on channel conditions and fathometer
 settings.

**Sheet
Reference
Number
3 of 3**

Revision Number:
3.13-20160811