

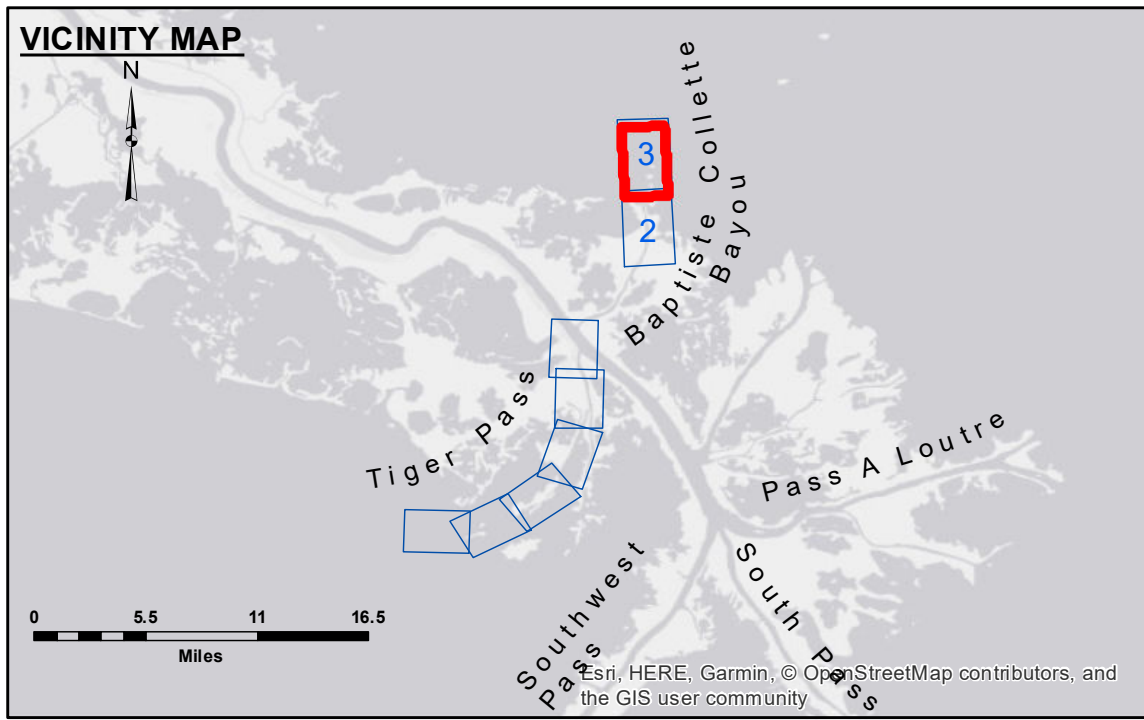
**DISTRICT NOTICE:** The data represents the results of data collection performed for a specific US Army Corps of Engineers project and is not to be used for any other purpose. It is only valid for its intended use, control, time and accuracy specifications. The user is responsible for the results. For more information, please contact the project engineer. **DATE CONTROLS:** Hydrographic survey data is subject to change due to several factors including but not limited to dredging activities. The Corps of Engineers does not assume any liability for changes in the hydrographic conditions when developed after the date of the survey. Product maintainers should not rely solely upon this information.

The United States Government furnishes these data and the recipient accepts and uses them with the express understanding that they are not to be used for any purpose other than that for which they were prepared. The user is responsible for the results. The data are not to be used for any purpose other than that for which they were prepared. The user is responsible for the results. The data are not to be used for any purpose other than that for which they were prepared. The user is responsible for the results.

Submitted:	RYLAND/HOSHMAN
Recommended:	Chief Survey Section
Approved:	Chief Waterways Maintenance Section
Surveyed By:	RYLAND/HOSHMAN
Plotted By:	AO
Checked By:	AO

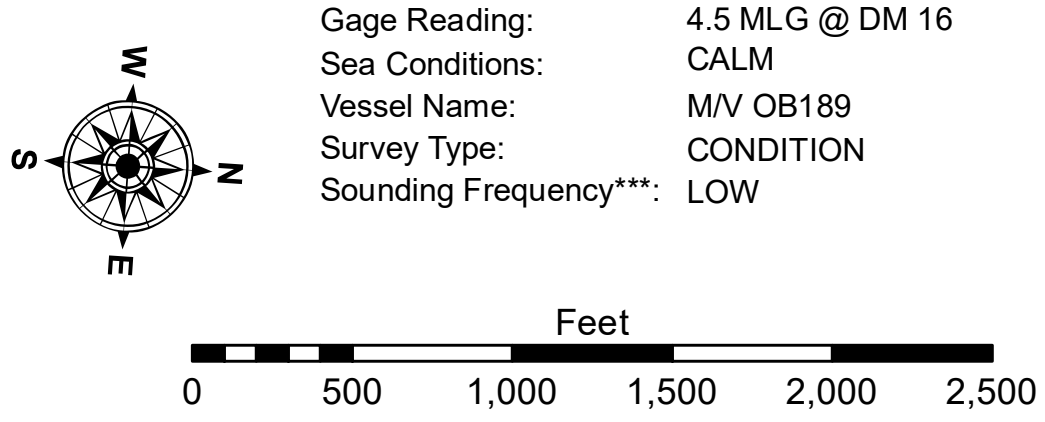
**MISS. RIVER OUTLETS AT VENICE  
BAPTISTE COLLETTE, MI. 7.8 TO 11.0  
OV\_03\_BAP\_20180814\_CS\_JETTTEXT  
14 August 2018**

**Sheet  
Reference  
Number  
3 of 3**



**LEGEND**

--- Federal Navigation Channel	● Cable Area	□ Borrow Area	■ -4' and above
— Federal Navigation Center Line	□ Placement Area	● Shoalest Sounding**	■ -4' to -8'
— As-built Pipeline/Cable	□ Anchorage Area	☆ Beacon, General	■ -8' to -10'
⋯ Unconfirmed Pipeline/Cable	⊗ Obstruction Point	◆ Red Navigation Buoy	■ -10' to -12'
— Project Depth Contour	⚓ Wrecks-Submerged	◆ Green Navigation Buoy	■ -12' to -16'
			■ -16' and below



**NOTES:**  
Horizontal Coordinate System:  
North American Datum of 1983 (NAD83), projected to the State Plane Coordinate System (SPCS), Louisiana South Zone. Distance units in U.S. Survey Feet.  
Vertical Datum:  
Soundings are shown in feet and indicate depths below Mean Low Gulf Datum (MLG).  
Datum relationships as of 01 May 2013:  
0.0' MLLW (2002-2006) = 0.0' NAVD88 (2009.55) = 3.5' MLG  
Distances on the Mississippi River, above and below Head of Passes are shown at 1 mile intervals.  
The location of navigation aids are based on and provided by the U.S. Coast Guard.  
2018 Aerial Photography data source: Precision Aerial Reconnaissance LLC, 1998 imagery in transparent green.  
Reference is N.O.A. Navigation Chart No. 11353.  
\*\* Shoalest Sounding per Quarter per Reach.  
\*\*\* High frequency (200 kHz) survey data represents the first signal return at a sounding location and will include suspended solids, known as "fluff", if present. Low frequency (20 kHz) survey data normally penetrates through this "fluff" layer to depict elevations of consolidated bottom material. Low frequency accuracies may vary depending on channel conditions and fathometer settings.