

DISCLAIMER: The United States Government furnishes these data and the recipient accepts and uses them with the express understanding that the data are not warranted for any purpose other than that for which they were prepared. The user is responsible for the results of any use of the data for other than its intended purpose. The application of the data for other than its intended purpose may result in injury or damage to persons or property. The user assumes all liability for such injury or damage. The information depicted on this map represents the results of a survey conducted on the date of the survey. The user is responsible for the results of any use of the data for other than its intended purpose. The user assumes all liability for such injury or damage.

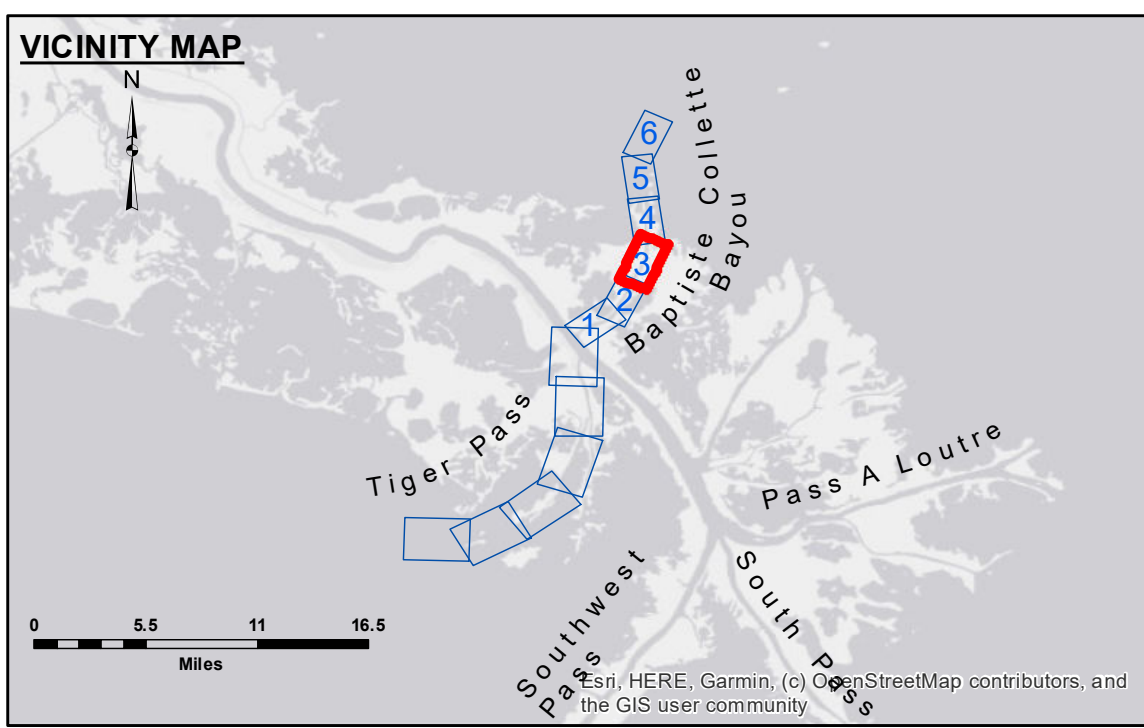
Submitted:	Surveyed By:	Checked By:
Recommended:	PM, LB	AD/JH
Chart Survey Section	Plotted By:	
	BD	
	Checked By:	
	AD/JH	

U.S. ARMY CORPS OF ENGINEERS
NEW ORLEANS DISTRICT

MISS. RIVER OUTLETS AT VENICE
BAPTISTE COLLETTE, MI. 3.6 TO 5.9
OV_03_BAP_20231220_CS
20 December 2023

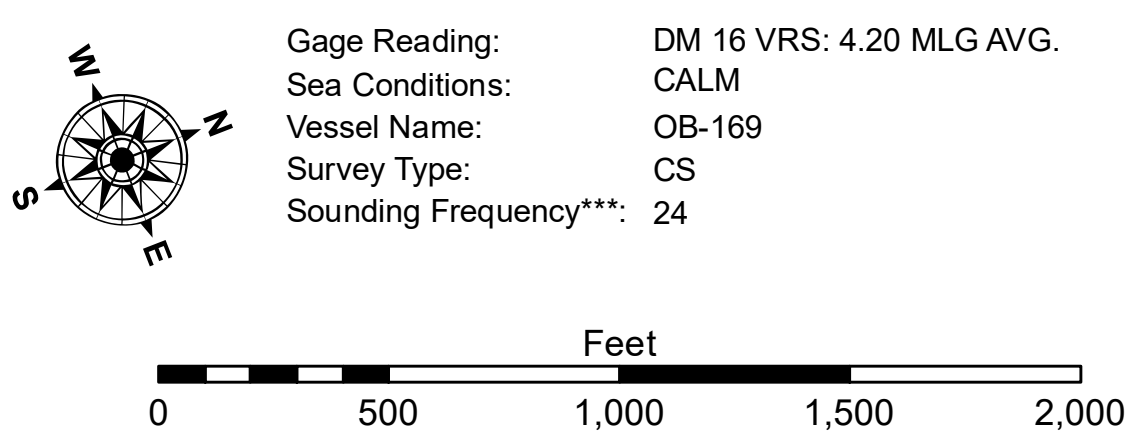
Sheet Reference Number
3 of 6

Revision Number:
4.2-2021049.20



LEGEND

--- Federal Navigation Channel	○ Cable Area	□ Borrow Area	■ -4' and above
— Federal Navigation Center Line	□ Placement Area	● Shoalest Sounding**	■ -4' to -8'
— As-built Pipeline/Cable	□ Anchorage Area	★ Beacon, General	■ -8' to -10'
..... Unconfirmed Pipeline/Cable	⊗ Obstruction Point	◆ Red Navigation Buoy	■ -10' to -12'
— Project Depth Contour	⚓ Wrecks-Submerged	◆ Green Navigation Buoy	■ -12' to -16'
			■ -16' and below



NOTES:

Horizontal Coordinate System:
North American Datum of 1983 (NAD83), projected to the State Plane Coordinate System (SPCS), Louisiana South Zone. Distance units in U.S. Survey Feet.

Vertical Datum:
Soundings are shown in feet and indicate depths below Mean Low Gulf Datum (MLG).
Datum relationships as of 01 May 2013:
0.0' MLLW (2002-2006) = 0.0' NAVD88 (2009.55) = 3.5' MLG

Distances on the Mississippi River, above and below Head of Passes are shown at 1 mile intervals.

The location of navigation aids are base on and provided by the U.S. Coast Guard.

2018 Aerial Photography data source: Precision Aerial Reconnaissance LLC.
1998 imagery in transparent green.

Reference is N.O.A.A. Navigation Chart No. 11353.

*** Shoalest Sounding per Quarter per Reach.

*** High frequency (200 kHz) survey data represents the first signal return at a sounding location and will include suspended solids, known as "fluff", if present. Low frequency (20 kHz) survey data normally penetrates through this "fluff" layer to depict elevations of consolidated bottom material. Low frequency accuracies may vary depending on channel conditions and fathometer settings.