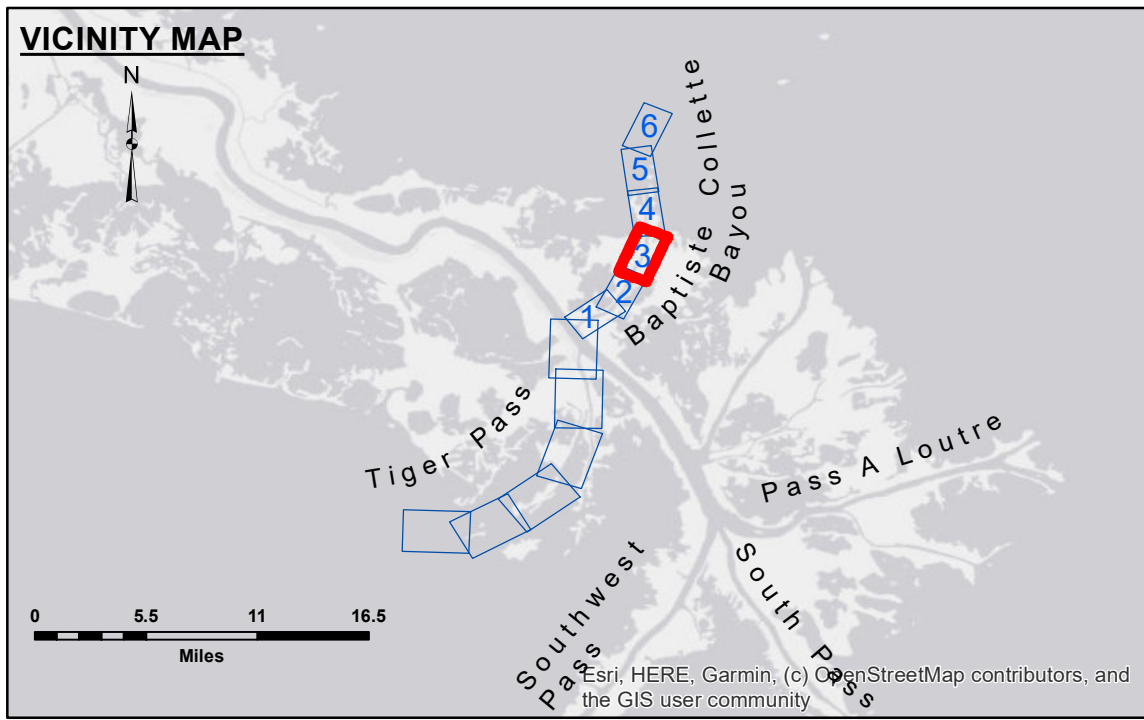


DISCLAIMER
 The information depicted on this map represents the results of a survey conducted by the U.S. Army Corps of Engineers. It is not intended for use as a navigational aid. The user is responsible for the accuracy, completeness, and reliability of the data. The Corps of Engineers does not warrant the accuracy or reliability of the data for any purpose other than that intended. The Corps of Engineers does not assume any liability for damages or injury resulting from the use of this information. The Corps of Engineers does not assume any liability for damages or injury resulting from the use of this information. The Corps of Engineers does not assume any liability for damages or injury resulting from the use of this information.

U.S. ARMY CORPS OF ENGINEERS NEW ORLEANS DISTRICT	
Submitted:	Surveyed By: PM,LT
Recommended: Chief, Survey Section	Plotted By: JHI
Approved: Chief, Waterways Maintenance Section	Checked By: JHI

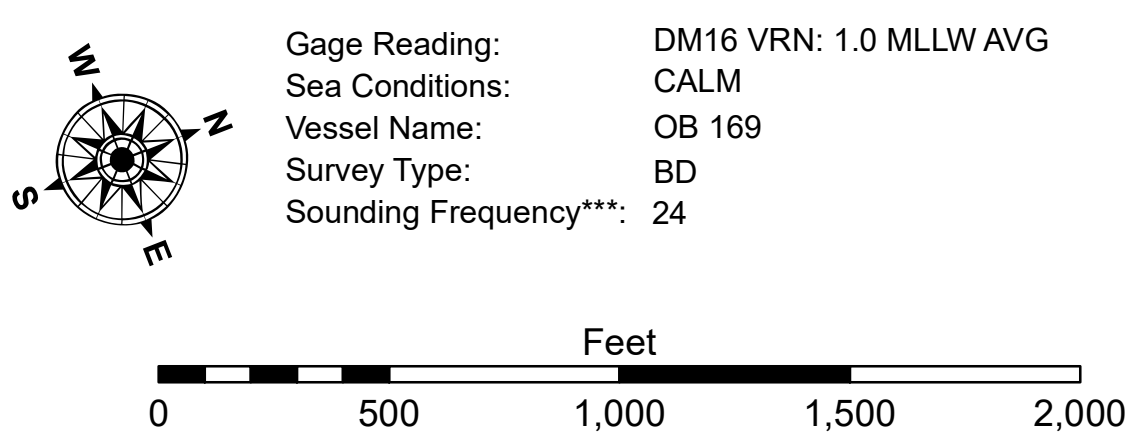
**MISS. RIVER OUTLETS AT VENICE
 BAPTISTE COLLETTE, MI. 3.6 TO 5.9
 OV_03_BAP_20241120_BD
 20 November 2024**

**Sheet Reference Number
 3 of 6**



LEGEND

--- Federal Navigation Channel	○ Cable Area	□ Borrow Area	■ -7.5' and above
— Federal Navigation Center Line	□ Placement Area	● Shoalest Sounding**	■ -7.5' to -11.5'
— As-built Pipeline/Cable	□ Anchorage Area	☆ Beacon, General	■ -11.5' to -13.5'
..... Unconfirmed Pipeline/Cable	✕ Obstruction Point	◆ Red Navigation Buoy	■ -13.5' to -15.5'
— Project Depth Contour	✶ Wrecks-Submerged	◆ Green Navigation Buoy	■ -15.5' to -19.5'
			■ -19.5' and below



NOTES:
 Horizontal Coordinate System:
 North American Datum of 1983 (NAD83), projected to the State Plane
 Coordinate System (SPCS), Louisiana South Zone. Distance units in U.S. Survey Feet.