

Disclaimer: The data represents the results of data collection processing for a specific US Army Corps of Engineers project. The user is responsible for the results. The user is responsible for the results. The user is responsible for the results. The user is responsible for the results. The user is responsible for the results.

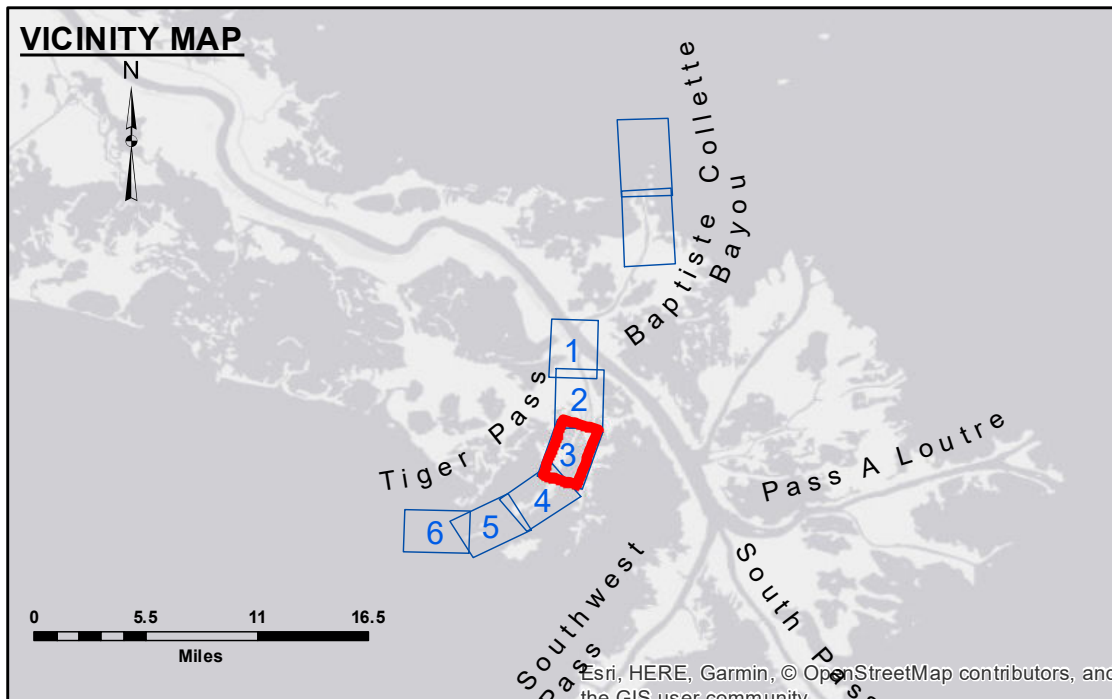
Vertical Datum: Soundings are shown in feet and indicate depths below Mean Low Gulf Datum (MLG). Datum relationships as of 01 May 2013: 0.0' MLLW (2002-2006) = 0.0' NAVD88 (2009.55) = 3.5' MLG

Table with columns for Submitted, Recommended, and Approved. Submitted: RYLANDSONNER, Recommended: Chet Survey Section, Approved: Chet Waterways Maintenance Section.

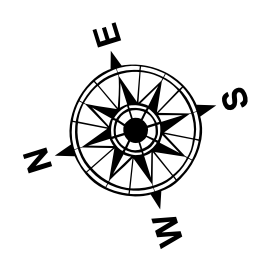
MISS. RIVER OUTLETS AT VENICE TIGER PASS OV_03_TIG_20190130_CS 30 January 2019

Sheet Reference Number 3 of 6

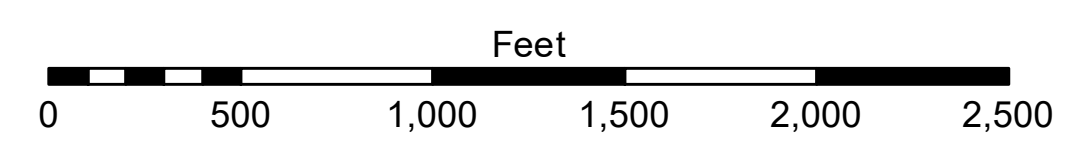
Revision Number: 3.13-20160811



LEGEND table with symbols for Federal Navigation Channel, Cable Area, Borrow Area, Shoalest Sounding, Beacon, Red Navigation Buoy, Green Navigation Buoy, Placement Area, Anchorage Area, Obstruction Point, Wrecks-Submerged, and Project Depth Contour.



Gage Reading: V.6.2DM17:3.2 USED:4.6 MLG
Sea Conditions: CHOPPY
Vessel Name: OB-189
Survey Type: CONDITION
Sounding Frequency***: HIGH



NOTES: Horizontal Coordinate System: North American Datum of 1983 (NAD83), projected to the State Plane Coordinate System (SPCS), Louisiana South Zone. Vertical Datum: Soundings are shown in feet and indicate depths below Mean Low Gulf Datum (MLG). 2019 Aerial Photography data source: P.A.R. LLC. Reference is N.O.A. Navigation Chart No. 11353. ** Shoalest Sounding per Quarter per Reach. *** High frequency (200 kHz) survey data represents the first signal return at a sounding location and will include suspended solids, known as "fluff", if present.