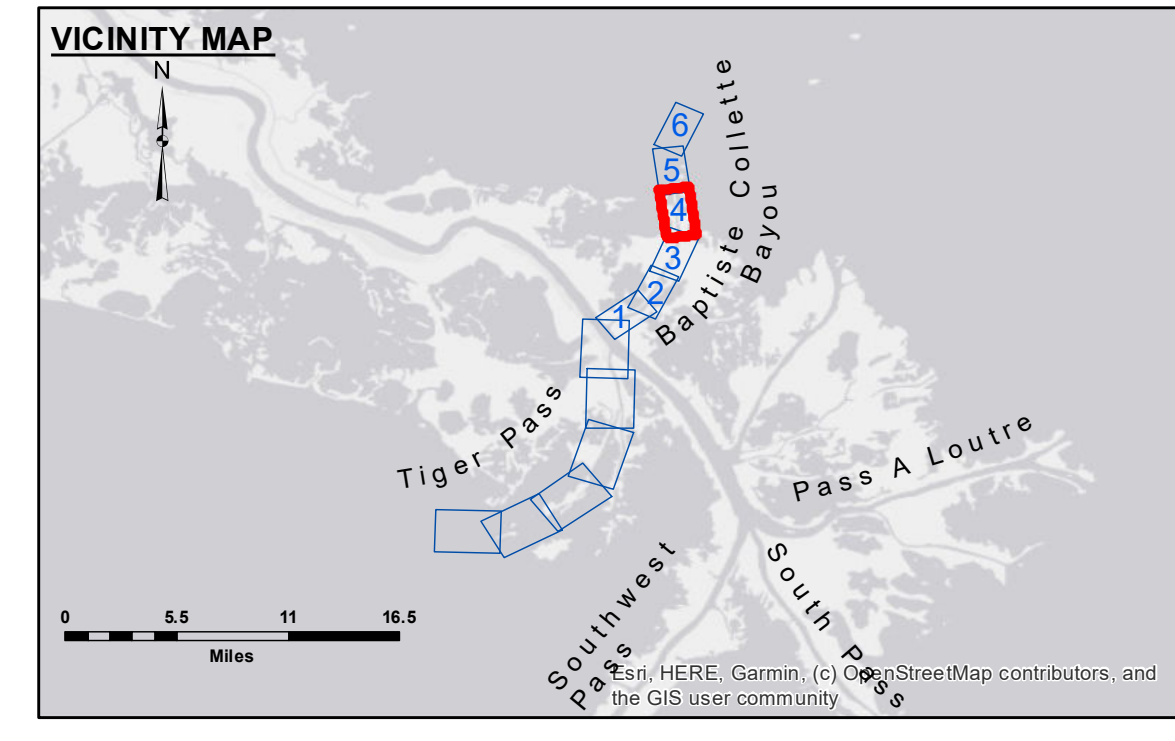


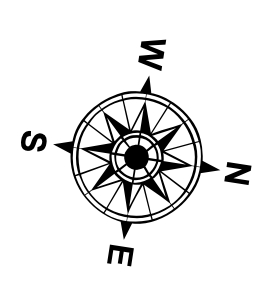
DISCLAIMER: The data represented on this map represents the results of a survey conducted by the U.S. Army Corps of Engineers. The data is provided for informational purposes only and is not intended for navigation. The user is responsible for the accuracy, reliability, and use of the data. The Corps of Engineers does not warrant the accuracy, reliability, or use of the data for any purpose other than that for which it was collected. The Corps of Engineers is not responsible for any damage or injury resulting from the use of the data. The information depicted on this map represents the results of a survey conducted by the U.S. Army Corps of Engineers. The data is provided for informational purposes only and is not intended for navigation. The user is responsible for the accuracy, reliability, and use of the data. The Corps of Engineers does not warrant the accuracy, reliability, or use of the data for any purpose other than that for which it was collected. The Corps of Engineers is not responsible for any damage or injury resulting from the use of the data.

Submitted:	Surveyed By: PM/KC
Recommended: Chief Survey Section	Plotted By: BD
Approved: Chief Waterways Maintenance Section	Checked By: AD/JH

**MISS. RIVER OUTLETS AT VENICE
BAPTISTE COLLETTE, MI. 5.9 TO 7.8
OV_04_BAP_20230808_CS
08 August 2023**



LEGEND			
--- Federal Navigation Channel	○ Cable Area	□ Borrow Area	■ -4' and above
— Federal Navigation Center Line	▭ Placement Area	● Shoalest Sounding**	■ -4' to -8'
— As-built Pipeline/Cable	⊠ Anchorage Area	★ Beacon, General	■ -8' to -10'
..... Unconfirmed Pipeline/Cable	⊗ Obstruction Point	◆ Red Navigation Buoy	■ -10' to -12'
— Project Depth Contour	⚓ Wrecks-Submerged	◆ Green Navigation Buoy	■ -12' to -16'
			■ -16' and below



Gage Reading:	DM 16: 3.46 MLG AVG.
Sea Conditions:	CALM
Vessel Name:	OB-167
Survey Type:	CS
Sounding Frequency***:	24

NOTES:
Horizontal Coordinate System: North American Datum of 1983 (NAD83), projected to the State Plane Coordinate System (SPCS), Louisiana South Zone. Distance units in U.S. Survey Feet.
Vertical Datum: Soundings are shown in feet and indicate depths below Mean Low Gulf Datum (MLG). Datum relationships as of 01 May 2013: 0.0' MLLW (2002-2006) = 0.0' NAVD88 (2009.55) = 3.5' MLG
Distances on the Mississippi River, above and below Head of Passes are shown at 1 mile intervals.
The location of navigation aids are based on and provided by the U.S. Coast Guard.
2018 Aerial Photography data source: Precision Aerial Reconnaissance LLC. 1998 imagery in transparent green.
Reference is N.O.A. Navigation Chart No. 11353.
** Shoalest Sounding per Quarter per Reach.
*** High frequency (200 kHz) survey data represents the first signal return at a sounding location and will include suspended solids, known as "fluff", if present. Low frequency (20 kHz) survey data normally penetrates through this "fluff" layer to depict elevations of consolidated bottom material. Low frequency accuracies may vary depending on channel conditions and fathometer settings.

**Sheet Reference Number
4 of 6**