

**US Army Corps of Engineers District: CEMVN**

**DISCLAIMER:** The data represents the results of data collection for a specific US Army Corps of Engineers project. The data is not intended for use in any other project, and the user is responsible for the accuracy, reliability, and suitability of the data for their intended purpose. The user is responsible for the accuracy, reliability, and suitability of the data for their intended purpose. The user is responsible for the accuracy, reliability, and suitability of the data for their intended purpose.

Submitted:	Surveyed By: PM,LT
Recommended:	Plotted By: BD
Approved:	Checked By: AOJ/H

U.S. ARMY CORPS OF ENGINEERS  
NEW ORLEANS DISTRICT

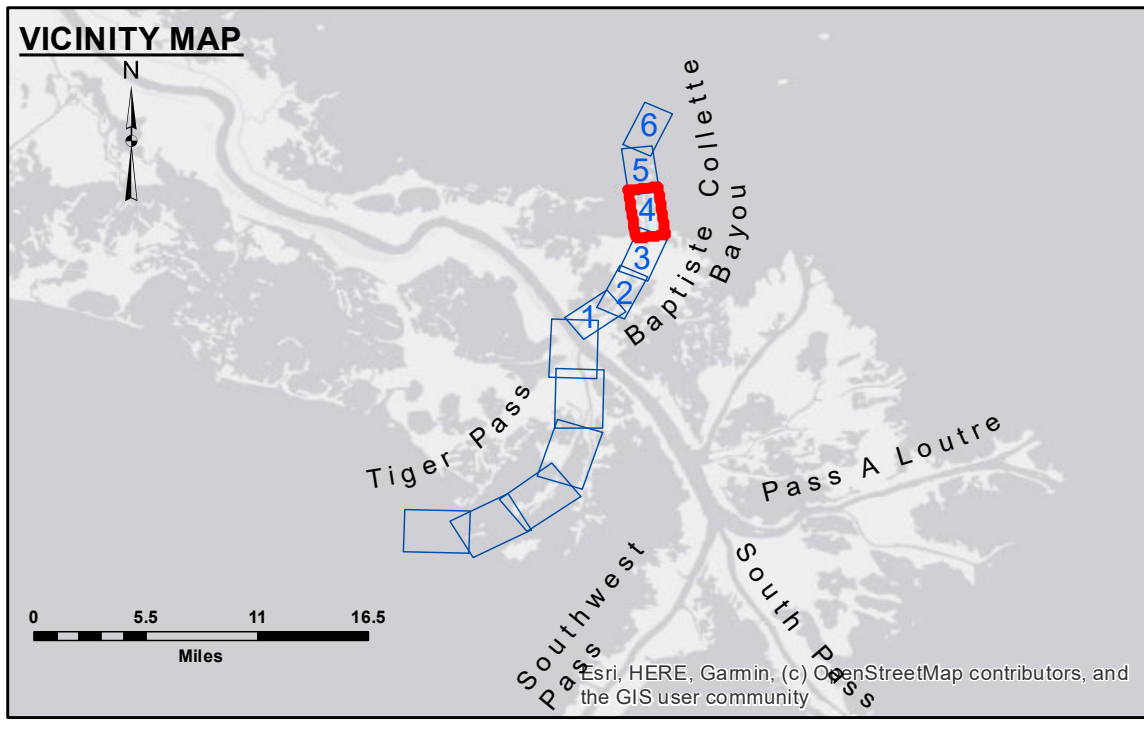
**MISS. RIVER OUTLETS AT VENICE  
BAPTISTE COLLETTE, MI. 5.9 TO 7.8**

**OV\_04\_BAP\_20250212\_BD**

**12 February 2025**

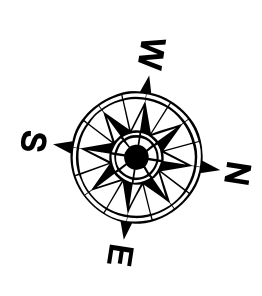
**Sheet Reference Number**

**4 of 6**

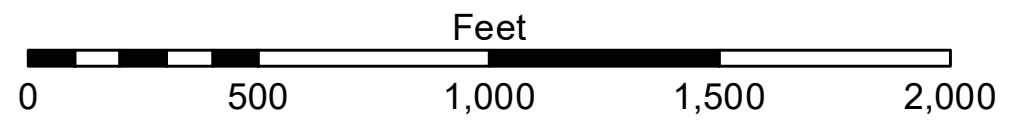


**LEGEND**

- - - Federal Navigation Channel	○ Cable Area	□ Borrow Area	■ -7.5' and above
— Federal Navigation Center Line	□ Placement Area	● Shoalest Sounding**	■ -7.5' to -11.5'
— As-built Pipeline/Cable	□ Anchorage Area	☆ Beacon, General	■ -11.5' to -13.5'
..... Unconfirmed Pipeline/Cable	⊗ Obstruction Point	◆ Red Navigation Buoy	■ -13.5' to -15.5'
— Project Depth Contour	⚓ Wrecks-Submerged	◆ Green Navigation Buoy	■ -15.5' to -19.5'
			■ -19.5' and below



Gage Reading: 0.0 MLLW AVG.  
Sea Conditions: CHOPPY  
Vessel Name: OB-169  
Survey Type: BD  
Sounding Frequency\*\*\*: 24



**NOTES:**

Horizontal Coordinate System:  
North American Datum of 1983 (NAD83), projected to the State Plane Coordinate System (SPCS), Louisiana South Zone. Distance units in U.S. Survey Feet.

Vertical Datum:  
Soundings are shown in feet and indicate depths below Mean Lower Low Water Datum (MLLW). Datum relationships as of April 2023:  
0.0' NAVD88 (2009.55) = -0.20' MLLW (2002-2006) = 3.3' MLG

Distances on the Mississippi River, above and below Head of Passes are shown at 1 mile intervals.

The location of navigation aids are base on and provided by the U.S. Coast Guard.

2018 Aerial Photography data source: Precision Aerial Reconnaissance LLC, 1998 imagery in transparent green.

Reference is N.O.A. Navigation Chart No. 11353.

\*\* Shoalest Sounding per Quarter per Reach.

\*\*\* High frequency (200 kHz) survey data represents the first signal return at a sounding location and will include suspended solids, known as "fluff", if present. Low frequency (20 kHz) survey data normally penetrates through this "fluff" layer to depict elevations of consolidated bottom material. Low frequency accuracies may vary depending on channel conditions and fathometer settings.