

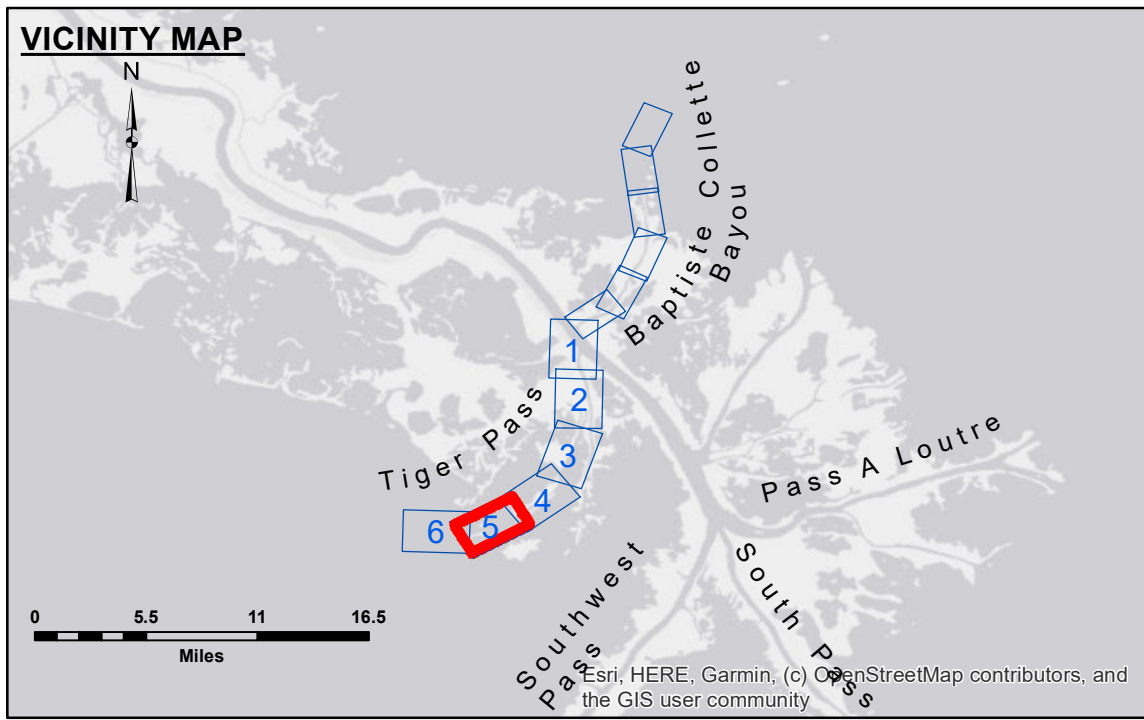
US Army Corps of Engineers
District: CEMVN

DISCLAIMER
The data represented on this map is the result of a collection of data for a specific project. The user is responsible for the accuracy, completeness, and reliability of the data for its intended use. The user is responsible for the results of the application of the data for other than its intended purpose. Data Constant Hydrographic Survey data is subject to change rapidly due to several factors including but not limited to dredging, shoaling, and other changes in the hydrographic conditions when developed after the date of the survey. The Corps of Engineers does not accept responsibility for changes in the hydrographic conditions when developed after the date of the survey. The Corps of Engineers does not accept responsibility for changes in the hydrographic conditions when developed after the date of the survey. The Corps of Engineers does not accept responsibility for changes in the hydrographic conditions when developed after the date of the survey.

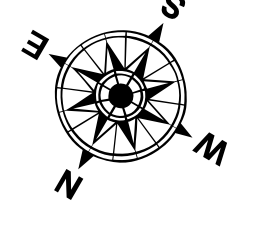
Submitted:	Surveyed By:	MOLLERE/OAKMAN
Recommended:	Plotted By:	AO
Approved:	Checked By:	AO

MISS. RIVER OUTLETS AT VENICE
TIGER PASS
OV_05_TIG_20240425_CS
25 April 2024

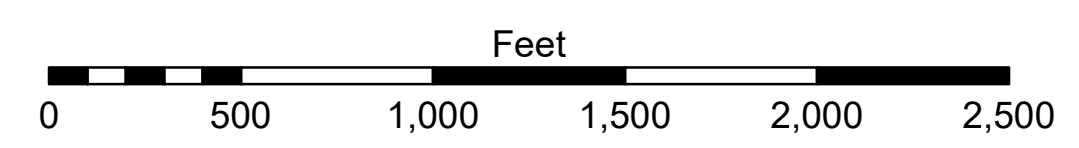
Sheet Reference Number
5 of 6



LEGEND			
--- Federal Navigation Channel	○ Cable Area	□ Borrow Area	■ -3' and above
— Federal Navigation Center Line	□ Placement Area	● Shoalest Sounding**	■ -3' to -7'
— As-built Pipeline/Cable	□ Anchorage Area	★ Beacon, General	■ -7' to -11'
..... Unconfirmed Pipeline/Cable	⊗ Obstruction Point	◆ Red Navigation Buoy	■ -11' to -13'
— Project Depth Contour	⚓ Wrecks-Submerged	◆ Green Navigation Buoy	■ -13' to -15'
			■ -15' to -19'
			■ -19' and below



Gage Reading: DM23: 0.9 MLLW AVG
Sea Conditions: CALM
Vessel Name: OB-198
Survey Type: CS
Sounding Frequency***: HIGH



NOTES:
Horizontal Coordinate System: North American Datum of 1983 (NAD83), projected to the State Plane Coordinate System (SPCS), Louisiana South Zone. Distance units in U.S. Survey Feet.
Vertical Datum: Soundings are shown in feet and indicate depths below Mean Lower Low Water Datum (MLLW). Datum relationships as of April 2023: 0.0' NAVD83 (2009.55) = -0.13' MLLW (2012-2016) = -2.87' MLG
Distances on Tiger Pass are shown at 1 mile intervals.
The location of navigation aids are based on and provided by the U.S. Coast Guard.
2022 Aerial Photography data source: P.A.R. LLC
Reference is N.O.A. Navigation Chart No. 11353.
** Shoalest Sounding per Quarter per Reach.
*** High frequency (200 kHz) survey data represents the first signal return at a sounding location and will include suspended solids, known as "fluff", if present. Low frequency (20 kHz) survey data normally penetrates through this "fluff" layer to depict elevations of consolidated bottom material. Low frequency accuracies may vary depending on channel conditions and fathometer settings.