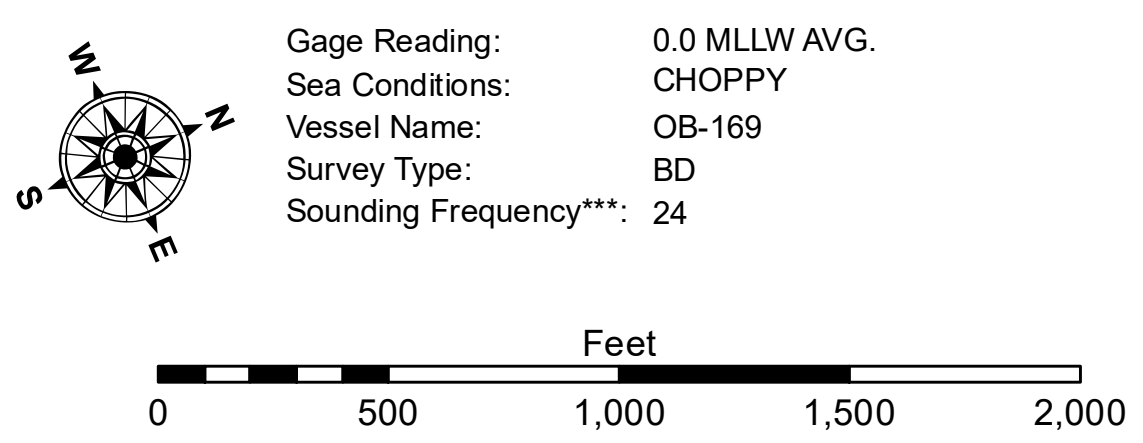


LEGEND

Federal Navigation Channel	Cable Area	Borrow Area	-7.5' and above
Federal Navigation Center Line	Placement Area	Shoalest Sounding**	-7.5' to -11.5'
As-built Pipeline/Cable	Anchorage Area	Beacon, General	-11.5' to -13.5'
Unconfirmed Pipeline/Cable	Obstruction Point	Red Navigation Buoy	-13.5' to -15.5'
Project Depth Contour	Wrecks-Submerged	Green Navigation Buoy	-15.5' to -19.5'
			-19.5' and below



NOTES:
 Horizontal Coordinate System: North American Datum of 1983 (NAD83), projected to the State Plane Coordinate System (SPCS), Louisiana South Zone. Distance units in U.S. Survey Feet.
 Vertical Datum: Soundings are shown in feet and indicate depths below Mean Lower Low Water Datum (MLLW). Datum relationships as of April 2023: 0.0' NAVD88 (2009.55) = -0.20' MLLW (2002-2006) = 3.3' MLG
 Distances on the Mississippi River, above and below Head of Passes are shown at 1 mile intervals.
 The location of navigation aids are base on and provided by the U.S. Coast Guard.
 2018 Aerial Photography data source: Precision Aerial Reconnaissance LLC, 1998 imagery in transparent green.
 Reference is N.O.A.A. Navigation Chart No. 11353.
 ** Shoalest Sounding per Quarter per Reach.
 *** High frequency (200 kHz) survey data represents the first signal return at a sounding location and will include suspended solids, known as "fluff", if present. Low frequency (20 kHz) survey data normally penetrates through this "fluff" layer to depict elevations of consolidated bottom material. Low frequency accuracies may vary depending on channel conditions and fathometer settings.



DISCLAIMER:
 The United States Government furnishes these data and the recipient accepts and uses them with the express understanding that they are not intended for navigation purposes, and that the Government makes no warranty, expressed or implied, concerning the accuracy, completeness, or reliability of the data for any particular purpose of the recipient. These data are not to be used for any purpose other than that for which they were originally prepared. The recipient may not transfer these data to others without the written consent of the U.S. Army Corps of Engineers. The information depicted on this map represents the results of a survey conducted on the date of the survey. The recipient is advised that the information depicted on this map is not a guarantee of accuracy and is subject to change without notice. The recipient is advised to verify the information depicted on this map with the appropriate authorities before use.

**U.S. ARMY CORPS OF ENGINEERS
NEW ORLEANS DISTRICT**

Submitted:	Surveyed By: PM,LT
Recommended:	Plotted By: BD
Checked:	Checked By: AOJH
Approved:	Checked: Waterways Maintenance Section

**MISS. RIVER OUTLETS AT VENICE
 BAPTISTE COLLETTE, MI. 10.0 TO 12.4
 OV_06_BAP_20250212_BD
 12 February 2025**

**Sheet
 Reference
 Number
 6 of 6**

Revision Number:
4.2-202 (04/20)