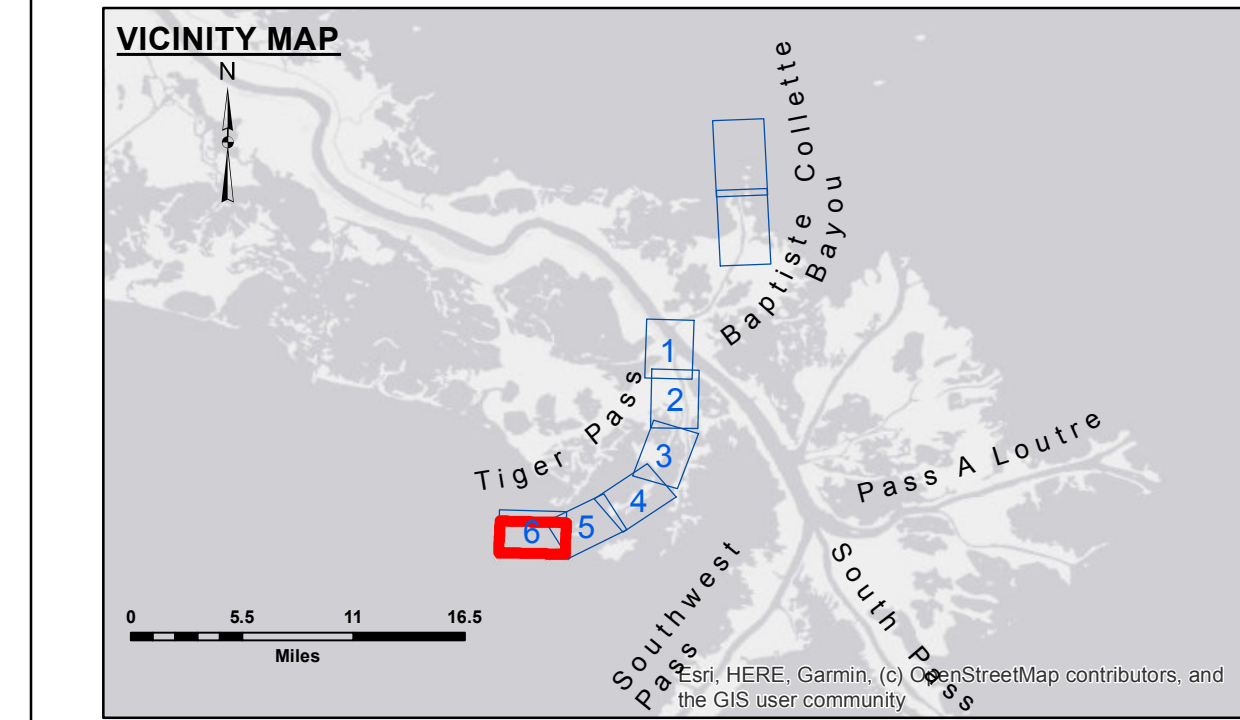


APPROXIMATE C/L STATION COORDINATES

C/L STATION	X-COORDINATE	Y-COORDINATE
P.C. #8 675+67.94	3884109.116'	236633.832'
P.O.T. 740+00.00	3877677.095'	236528.439'
P.O.T. 759+70.00	3875705.130'	236496.254'
P.O.T. 772+15.00	3874462.923'	236477.004'



LEGEND

- Federal Navigation Channel
- Federal Navigation Center Line
- As-built Pipeline/Cable
- Unconfirmed Pipeline/Cable
- Project Depth Contour
- Cable Area
- Placement Area
- Anchorage Area
- Obstruction Point
- Wrecks-Submerged
- Borrow Area
- Shoalest Sounding**
- Beacon, General
- Red Navigation Buoy
- Green Navigation Buoy
- 0' and above
- 4' to 0'
- 4' to -8'
- 8' to -10'
- 10' to -12'
- 12' to -16'
- 16' and below

NOTES:

Horizontal Coordinate System: North American Datum of 1983 (NAD83), projected to the State Plane Coordinate System (SPCS), Louisiana South Zone. Distance units in U.S. Survey Feet.

Vertical Datum: Soundings are shown in feet and indicate depths below Mean Low Gulf Datum (MLG). Datum relationships as of 01 May 2013: 0.0' MLLW (2002-2006) = 0.0' NAVD88 (2009.55) = 3.0' MLG

Distances on Tiger Pass are shown at 1 mile intervals. The location of navigation aids are base on and provided by the U.S. Coast Guard.

2019 Aerial Photography data source: P.A.R. LLC

Reference is N.O.A. Navigation Chart No. 11353.

** Shoalest Sounding per Quarter per Reach.

*** High frequency (200 kHz) survey data represents the first signal return at a sounding location and will include suspended solids, known as "fluff", if present. Low frequency (20 kHz) survey data normally penetrates through this "fluff" layer to depict elevations of consolidated bottom material. Low frequency accuracies may vary depending on channel conditions and fathometer settings.



DISCLAIMER: The information depicted on this map represents the results of a survey conducted by the U.S. Army Corps of Engineers. It is not intended to be used for any purpose other than that for which it was prepared. The user is responsible for the accuracy, completeness, and reliability of the information. The user is responsible for the accuracy, completeness, and reliability of the information. The user is responsible for the accuracy, completeness, and reliability of the information.

U.S. ARMY CORPS OF ENGINEERS
NEW ORLEANS DISTRICT

Submitted:	Surveyed By: ED-SS
Recommended: Chief, Survey Section	Plotted By: AO
Approved: Chief, Waterways Maintenance Section	Checked By: AO

**MISS. RIVER OUTLETS AT VENICE
TIGER PASS
OV_06_TIG_20190320_CS
20 March 2019**

**Sheet Reference Number
6 of 6**

Revision Number: 3.12-2016/11