

Access Constraints: The United States Government furnishes these data and the recipient accepts and uses them with the express understanding that they are not to be used for any purpose other than that for which they were prepared, or implied concerning the accuracy, completeness, readability, usability or suitability, for any particular purpose of the recipient. The user is responsible for the results of any use of these data. The application of the data for other than its intended purpose is at the user's risk. The user is responsible for the results of any use of these data. The application of the data for other than its intended purpose is at the user's risk.

Distribution Liability: The data represents the results of data collection/processing for a specific US Army Corps of Engineers project. It is only valid for its intended use, control, time and accuracy specifications. The user is responsible for the results of any use of these data. The application of the data for other than its intended purpose is at the user's risk.

Data Constants: Hydrographic survey data is subject to change rapidly due to several factors including but not limited to changing bathymetry, sedimentation, and other factors. The user is responsible for the results of any use of these data. The application of the data for other than its intended purpose is at the user's risk.

Disclaimer: The information depicted on this map represents the results of a survey conducted on the ground. It is not to be used for any purpose other than that for which it was prepared. The user is responsible for the results of any use of these data. The application of the data for other than its intended purpose is at the user's risk.

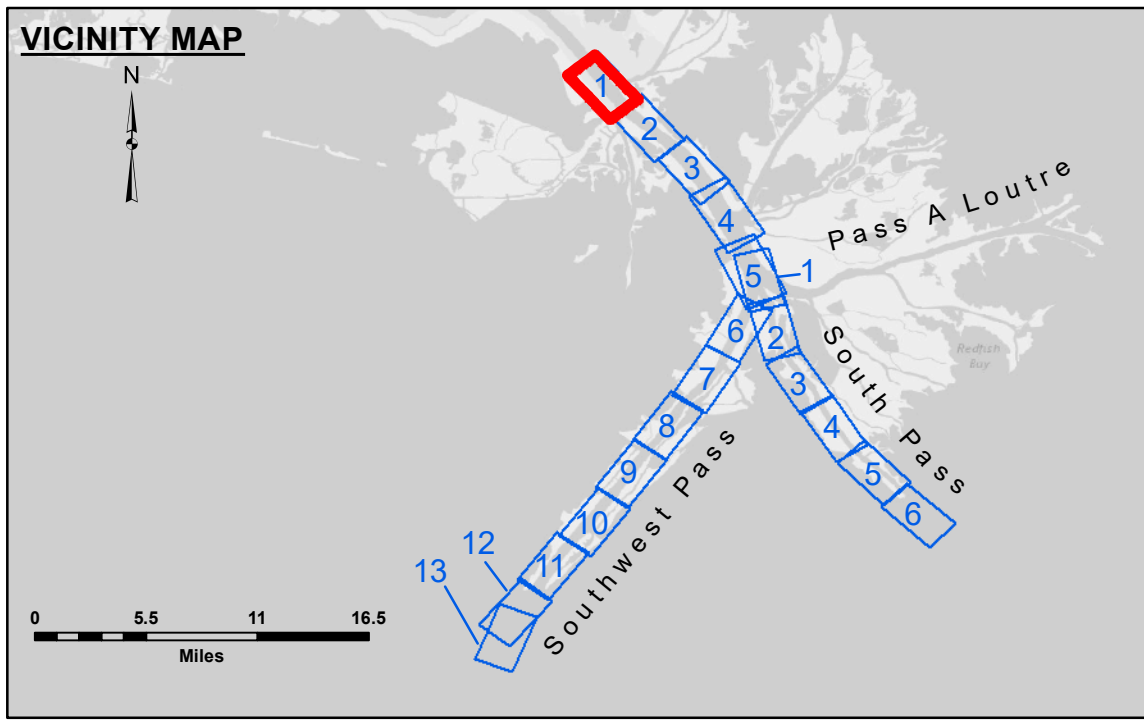
Submitted:	Surveyed By: LLB & JH
Recommended:	Plotted By: TSS
Approved:	Checked By: MSK

U.S. ARMY CORPS OF ENGINEERS
NEW ORLEANS DISTRICT

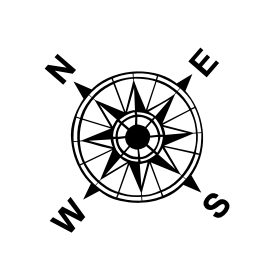
**MISSISSIPPI RIVER - B.R. TO GULF
SOUTHWEST PASS - SHEET 1
SW_01_SWP_20200608_CS_POSTSTORM
08 June 2020**

**Sheet Reference Number
1 of 13**

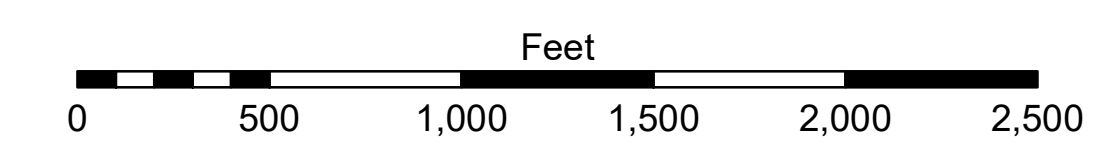
Revision Number:
4.1-20191105



LEGEND			
--- Federal Navigation Channel	○ Cable Area	□ Borrow Area	■ -10' and above
— Federal Navigation Center Line	□ Placement Area	● Shoalest Sounding**	■ -10' to -20'
— As-built Pipeline/Cable	□ Anchorage Area	★ Beacon, General	■ -20' to -30'
..... Unconfirmed Pipeline/Cable	⊗ Obstruction Point	◆ Red Navigation Buoy	■ -30' to -40'
— Project Depth Contour	⚓ Wrecks-Submerged	◆ Green Navigation Buoy	■ -40' to -45'
			■ -45' to -48.5'
			■ -48.5' to -55'
			■ -55' and below



Gage Reading: 3.68 AVG MLLW @ VENICE @ 1005 & 1410
 Sea Conditions: VERY ROUGH 3'- 4' SEAS
 Vessel Name: BEAUVAIS & JOHN BOPP
 Survey Type: CONDITION, SB
 Sounding Frequency***: LOW



NOTES:
 Horizontal Coordinate System: North American Datum of 1983 (NAD83), projected to the State Plane Coordinate System (SPCS), Louisiana South Zone. Distance units in U.S. Survey Feet.
 Vertical Datum: VENICE - 01480 (0.0 NAVD88; 2009.55 = 3.20' MLLW; 2015 = -0.3' MLLW; 07-11)
 Datum Relationships for gage 01480 as of July 2015:
 0.0' NAVD88 = -0.3' MLLW = 3.20' MLG
 Distances on the Mississippi River, above and below Head of Passes are shown at 1 mile intervals.
 The location of navigation aids are base on and provided by the U.S. Coast Guard.
 2016 Aerial Photography data source: Precision Aerial Reconnaissance, LLC (1998 DOQQ in green)
 Reference is N.O.A. Navigation Chart No. 11361.
 ** Shoalest Sounding per Quarter per Reach.
 *** High frequency (200 kHz) survey data represents the first signal return at a sounding location and will include suspended solids, known as "fluff", if present. Low frequency (24 kHz) survey data normally penetrates through this "fluff" layer to depict elevations of consolidated bottom material. Low frequency accuracies may vary depending on channel conditions and fathometer settings.