

US Army Corps of Engineers District: CEMVN

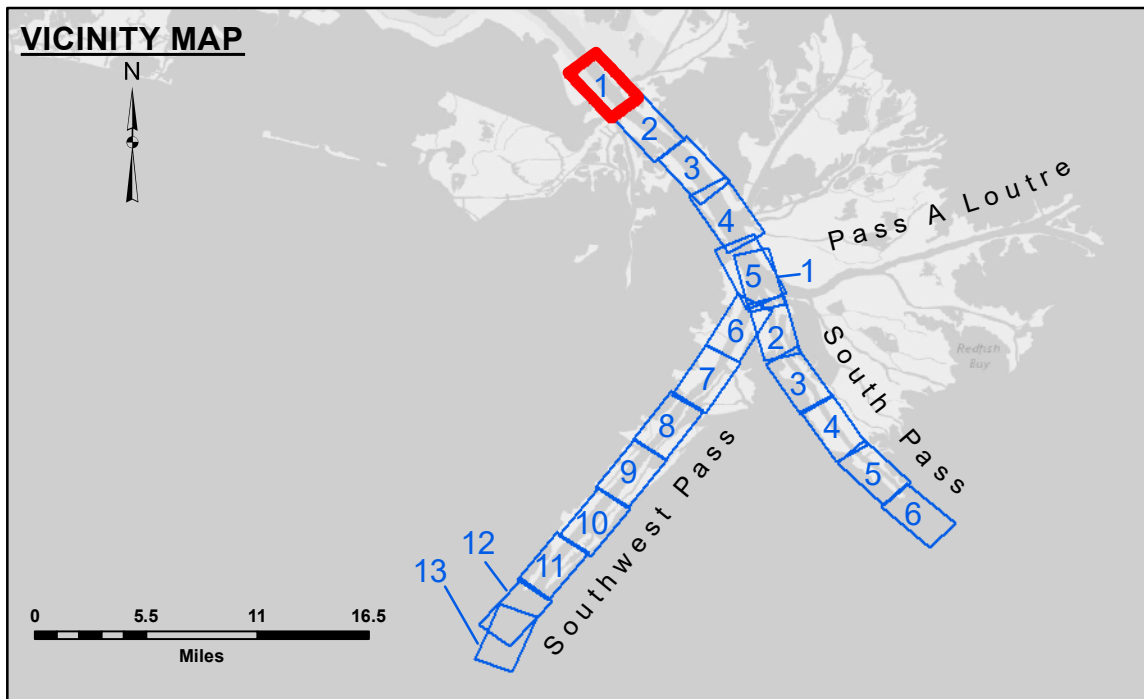
NOTES:
 Distribution Liability: The data represents the results of data collection/processing for a specific US Army Corps of Engineers project. It is only valid for its intended use, content, time and accuracy specifications. The user is responsible for the results of their use. The application of the data for other than its intended purpose is not supported.
 Data Constants: Hydrographic survey data is subject to change rapidly due to several factors including but not limited to changing bathymetry, sedimentation, and other factors. The user is responsible for the hydrographic conditions when developing after the date of the survey. The user is responsible for the accuracy of the data. The user is responsible for the accuracy of the data. The user is responsible for the accuracy of the data.

ACCESS NOTES:
 Access Constraints: The United States Government furnishes these data and the recipient accepts and uses them with the express understanding that the data are not to be used for any purpose other than that for which they were provided. The user is responsible for the accuracy, completeness, reliability, usability or suitability, for any particular purpose of the data. The user is responsible for the accuracy, completeness, reliability, usability or suitability, for any particular purpose of the data. The user is responsible for the accuracy, completeness, reliability, usability or suitability, for any particular purpose of the data. The user is responsible for the accuracy, completeness, reliability, usability or suitability, for any particular purpose of the data.

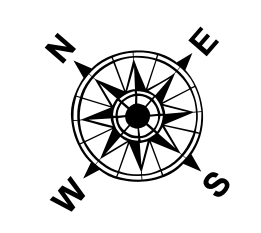
Submitted:	JUC & MGF
Recommended:	TSS
Approved:	MSK

U.S. ARMY CORPS OF ENGINEERS
NEW ORLEANS DISTRICT

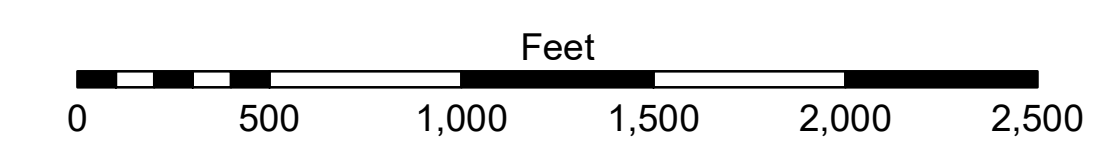
**MISSISSIPPI RIVER - B.R. TO GULF
 SOUTHWEST PASS - SHEET 1
 SW_01_SWP_2021020_CS_PRO
 20 October 2021**



LEGEND			
--- Federal Navigation Channel	○ Cable Area	□ Borrow Area	■ -10' and above
— Federal Navigation Center Line	□ Placement Area	● Shoalest Sounding**	■ -10' to -20'
— As-built Pipeline/Cable	□ Anchorage Area	★ Beacon, General	■ -20' to -30'
..... Unconfirmed Pipeline/Cable	⊗ Obstruction Point	◆ Red Navigation Buoy	■ -30' to -40'
— Project Depth Contour	⚓ Wrecks-Submerged	◆ Green Navigation Buoy	■ -40' to -45'
			■ -45' to -50'
			■ -50' to -55'
			■ -55' and below



Gage Reading: 0.8 MLLW @ VENICE @ 0935
 Sea Conditions: CALM
 Vessel Name: BEAUVAIS
 Survey Type: CONDITION, SB
 Sounding Frequency***: LOW



NOTES:
 Horizontal Coordinate System: North American Datum of 1983 (NAD83), projected to the State Plane Coordinate System (SPCS), Louisiana South Zone. Distance units in U.S. Survey Feet.
 Vertical Datum: Soundings are shown in feet and indicate depths below Mean Lower Low Water (MLLW, 12-16). Datum Relationships for gage 01480 as of March 2020: 0.0' NAVD83, 2009.55 = -0.53' MLLW = 2.97' MLG
 Distances on the Mississippi River, above and below Head of Passes are shown at 1 mile intervals.
 The location of navigation aids are base on and provided by the U.S. Coast Guard.
 2016 Aerial Photography data source: Precision Aerial Reconnaissance, LLC (1998 DOQQ in green)
 Reference is N.O.A. Navigation Chart No. 11361.
 ** Shoalest Sounding per Quarter per Reach.
 *** High frequency (200 kHz) survey data represents the first signal return at a sounding location and will include suspended solids, known as "fluff", if present. Low frequency (24 kHz) survey data normally penetrates through this "fluff" layer to depict elevations of consolidated bottom material. Low frequency accuracies may vary depending on channel conditions and fathometer settings.

**Sheet Reference Number
 1 of 13**

Revision Number:
4.2-302(04/20)