

Distribution Liability: The data represents the results of data collection/processing for a specific US Army Corps of Engineers project. It is only valid for its intended use, control, time and accuracy specifications. The user is responsible for the results. The user's application of the data for other than its intended purpose. Data Constants: Hydrographic survey data is subject to change rapidly due to several factors including but not limited to changing hydrographic conditions when developed after the date of the survey. The user is responsible for the results of the data. The user's application of the data for other than its intended purpose. The user is responsible for the results of the data. The user's application of the data for other than its intended purpose.

Access Constraints: The United States Government furnishes these data and the recipient accepts and uses them with the express understanding that the data are not to be used for any purpose other than that for which they were provided, and that the user is responsible for the results. The user is responsible for the results of the data. The user's application of the data for other than its intended purpose. The user is responsible for the results of the data. The user's application of the data for other than its intended purpose.

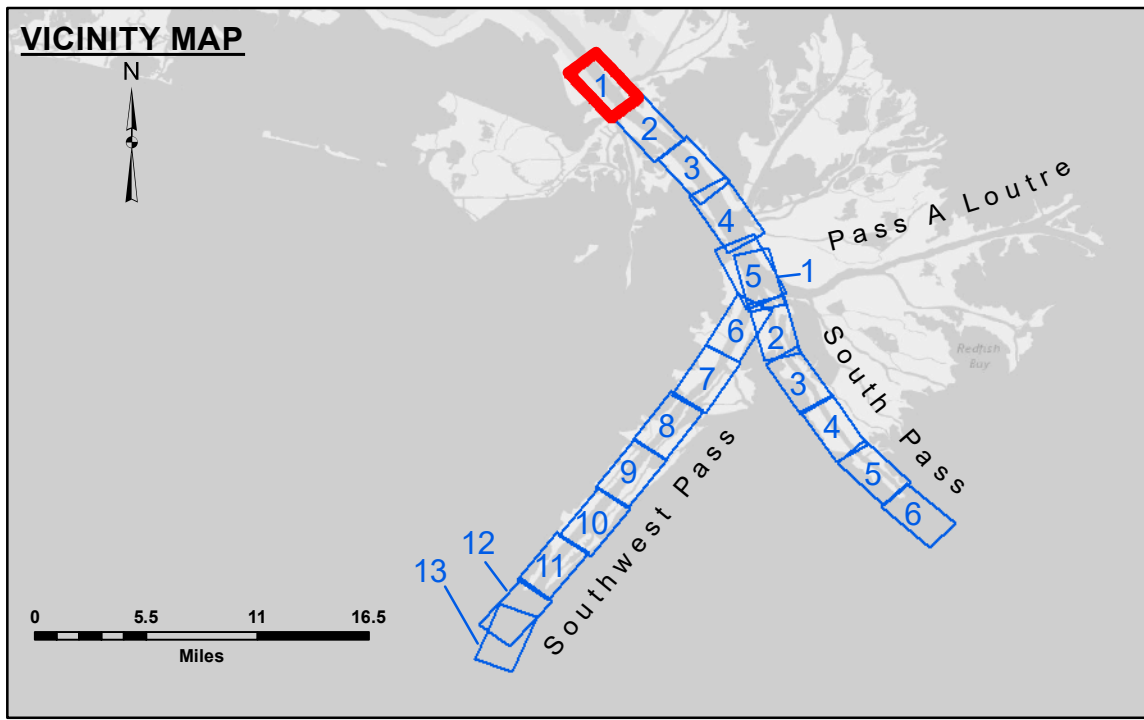
Submitted:	JUC & RCC
Recommended:	TSS
Approved:	MSK

U.S. ARMY CORPS OF ENGINEERS
NEW ORLEANS DISTRICT

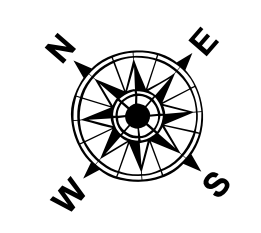
**MISSISSIPPI RIVER - B.R. TO GULF
SOUTHWEST PASS - SHEET 1
SW_01_SWP_20230426_CS_PRO
26 April 2023**

**Sheet Reference Number
1 of 13**

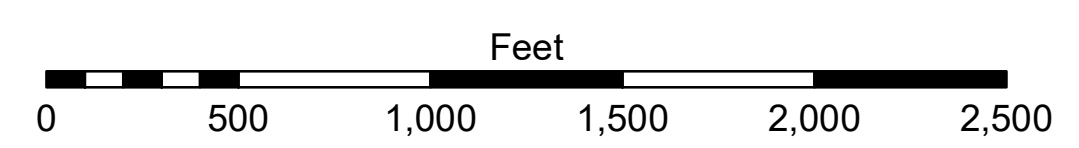
Revision Number:
4.2-302(04/20)



LEGEND	
--- Federal Navigation Channel	● Cable Area
— Federal Navigation Center Line	■ Placement Area
— As-built Pipeline/Cable	□ Anchorage Area
..... Unconfirmed Pipeline/Cable	⊗ Obstruction Point
— Project Depth Contour	★ Wrecks-Submerged
□ Borrow Area	★ Beacon, General
● Shoalest Sounding**	◆ Red Navigation Buoy
◆ Green Navigation Buoy	



Gage Reading: 1.2 MLLW @ VENICE @ 0900
Sea Conditions: CALM
Vessel Name: TOBIN
Survey Type: CONDITION, SB
Sounding Frequency***: LOW



NOTES:
Horizontal Coordinate System:
North American Datum of 1983 (NAD83), projected to the State Plane Coordinate System (SPCS), Louisiana South Zone. Distance units in U.S. Survey Feet.
Vertical Datum:
Soundings are shown in feet and indicate depths below Mean Lower Low Water (MLLW, 12-16). Datum Relationships for gage 01480 as of March 2020:
0.0' NAVD83, 2009.55 = -0.53' MLLW = 2.97' MLG
Distances on the Mississippi River, above and below Head of Passes are shown at 1 mile intervals.
The location of navigation aids are base on and provided by the U.S. Coast Guard.
2022 Aerial Photography data source: Optimal GEO (1998 DOQQ in green)
Reference is N.O.A. Navigation Chart No. 11361.
** Shoalest Sounding per Quarter per Reach.
*** High frequency (200 kHz) survey data represents the first signal return at a sounding location and will include suspended solids, known as "fluff", if present. Low frequency (24 kHz) survey data normally penetrates through this "fluff" layer to depict elevations of consolidated bottom material. Low frequency accuracies may vary depending on channel conditions and fathometer settings.