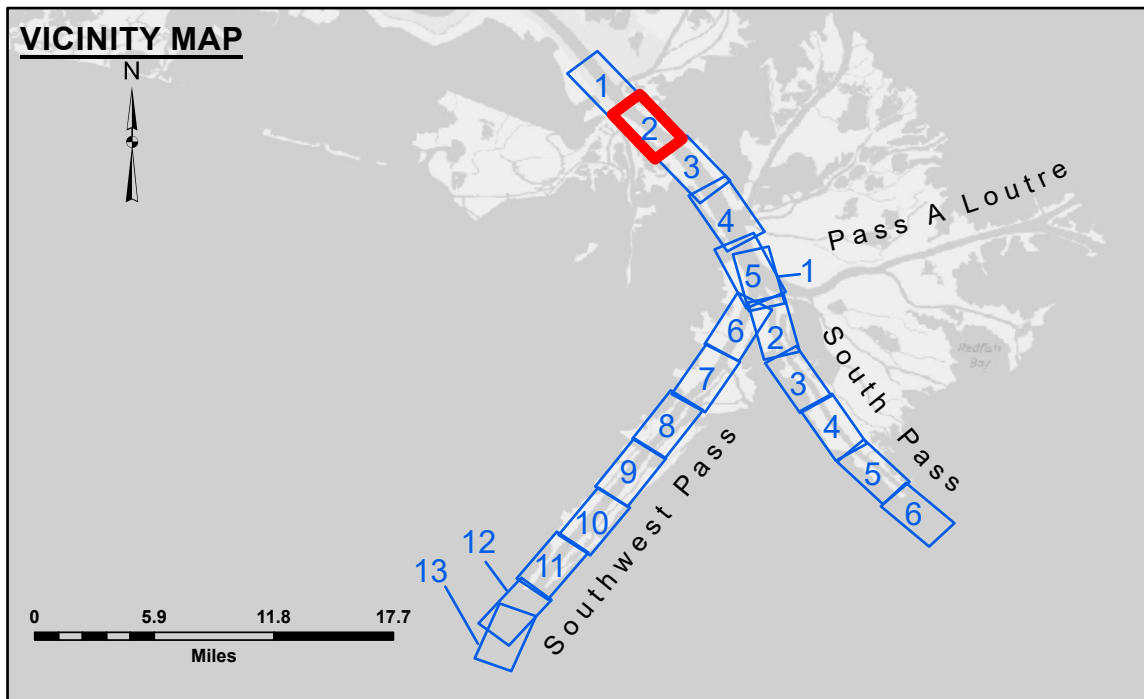


DISCLAIMER: The data represented on this map was collected by the Corps of Engineers and is intended for general use only. The user is responsible for the accuracy of the data and for the application of the data for other than its intended purpose. The Corps of Engineers does not warrant the accuracy of the data for any other use. The user is responsible for the accuracy of the data and for the application of the data for other than its intended purpose. The Corps of Engineers does not warrant the accuracy of the data for any other use.

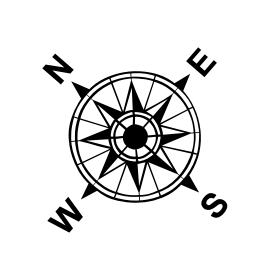
DISCLAIMER: The United States Government furnishes these data and the recipient accepts them with the express understanding that the data are not to be used for any purpose other than that for which they were prepared, and that the data are not to be used for any purpose other than that for which they were prepared. The recipient agrees not to release these data to anyone as they are the property of the United States Government. The recipient may not transfer these data to others without obtaining the permission of the United States Government.

Submitted:	Surveyed By:	JTB & DBD
Recommended:	Plotted By:	RSL
Approved:	Checked By:	MSK

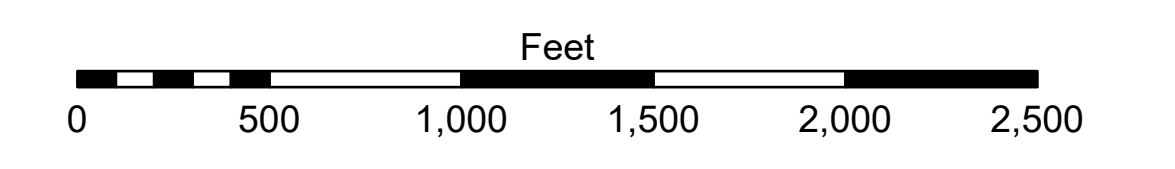
MISSISSIPPI RIVER - B. R. TO GULF SOUTHWEST PASS - SHEET 2
SW_02_SWPX_20240812_CS_B2B
 12 August 2024



LEGEND	
--- Federal Navigation Channel	● Cable Area
— Federal Navigation Center Line	□ Placement Area
— As-built Pipeline/Cable	□ Anchorage Area
..... Unconfirmed Pipeline/Cable	⊗ Obstruction Point
— Project Depth Contour	★ Wrecks-Submerged
3 Fluff Thickness (feet)*	★ Beacon, General
□ Borrow Area	◆ Red Navigation Buoy
● Shoalest Sounding**	◆ Green Navigation Buoy
■ -10' and above	
■ -10' to -20'	
■ -20' to -30'	
■ -30' to -40'	
■ -40' to -45'	
■ -45' to -50'	
■ -50' to -55'	
■ -55' and below	



Gage Reading: 0.5 MLLW @ VENICE (01480) @ 0955
 Sea Conditions: CALM
 Vessel Name: OB-173
 Survey Type: CONDITION, SB
 Sounding Frequency***: LOW



NOTES:
 Horizontal Coordinate System: North American Datum of 1983 (NAD83), projected to the State Plane Coordinate System (SPCS), Louisiana South Zone. Distance units in U.S. Survey Feet.
 Vertical Datum: Soundings are shown in feet and indicate depths below Mean Lower Low Water (MLLW, 12-16). Datum Relationships for gage 01480 as of March 2020: 0.0' NAVD83, 2009.55 = -0.53' MLLW = 2.97' MLG
 Distances on the Mississippi River, above and below Head of Passes are shown at 1 mile intervals.
 The location of navigation aids are base on and provided by the U.S. Coast Guard.
 2024 Aerial Photography data source: Optimal GEO (1998 DOQQ in green)
 Reference is N.O.A.A. Navigation Chart No. 11361.
 ** Shoalest Sounding per Quarter Per Reach.
 *** High frequency (200 kHz) survey data represents the first signal return at a sounding location and will include suspended solids, known as "fluff", if present. Low frequency (24 kHz) survey data normally penetrates through this "fluff" layer to depict elevations of consolidated bottom material. Low frequency accuracies may vary depending on channel conditions and fathometer settings.

Sheet Reference Number
 2 of 13

Revision Number: 5.23.12.3-23.12.3