

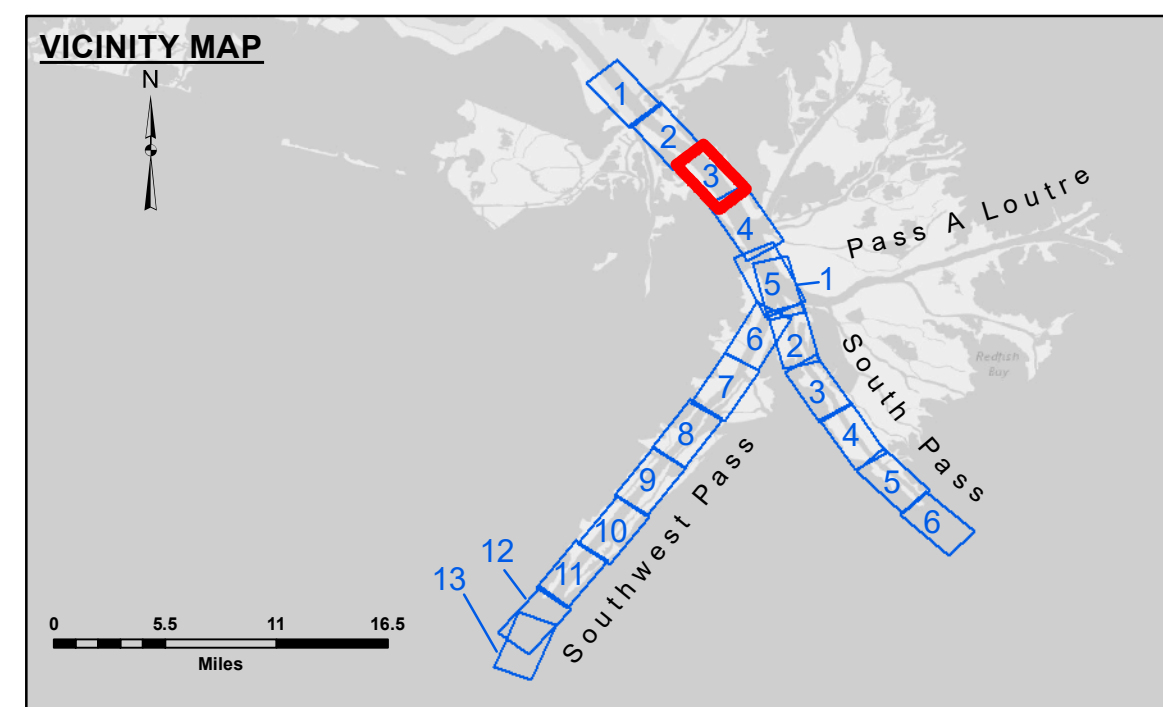
DISTRIBUTION LIABILITY: The data represents the results of data collection/processing for a specific US Army Corps of Engineers project. It is only valid for its intended use, contract, time and accuracy specifications. The user is responsible for the results and any errors. The user is responsible for the results and any errors. The user is responsible for the results and any errors.

DISCLAIMER: The United States Government furnishes these data and the recipient accepts and uses them with the express understanding that the data are provided for informational purposes only, and that the data are not intended for use in any other manner. The recipient is responsible for the results and any errors. The recipient is responsible for the results and any errors.

Submitted:	Surveyed by: JTB & MF
Recommended:	Plotted by: TSS
Checked by:	Checked by: MSK
Approved:	Checked by: MSK

U.S. ARMY CORPS OF ENGINEERS
NEW ORLEANS DISTRICT

**MISSISSIPPI RIVER - B. R. TO GULF
SOUTHWEST PASS - SHEET 3
SW_03_SWP_20200108_CS
08 January 2020**



LEGEND

--- Federal Navigation Channel	○ Cable Area	□ Borrow Area	■ -10' and above
— Federal Navigation Center Line	□ Placement Area	● Shoalest Sounding**	■ -10' to -20'
— As-built Pipeline/Cable	□ Anchorage Area	★ Beacon, General	■ -20' to -30'
..... Unconfirmed Pipeline/Cable	⊗ Obstruction Point	◆ Red Navigation Buoy	■ -30' to -40'
— Project Depth Contour	⚓ Wrecks-Submerged	◆ Green Navigation Buoy	■ -40' to -45'
			■ -45' to -48.5'
			■ -48.5' to -55'
			■ -55' and below

NOTES:

Horizontal Coordinate System:
North American Datum of 1983 (NAD83), projected to the State Plane Coordinate System (SPCS), Louisiana South Zone. Distance units in U.S. Survey Feet.

Vertical Datum:
Soundings are shown in feet and indicate depths below Mean Lower Low Water (MLLW, 07-11). Datum Relationships for gage 01525 as of July 2015:
0.0' NAVD86 = -0.3' MLLW = 3.20' MLG

Distances on the Mississippi River, above and below Head of Passes are shown at 1 mile intervals.

The location of navigation aids are base on and provided by the U.S. Coast Guard.

2016 Aerial Photography data source: Precision Aerial Reconnaissance, LLC (1998 DOQQ in green)

Reference is N.O.A. Navigation Chart No. 11361.

** Shoalest Sounding per Quarter per Reach.

*** High frequency (200 kHz) survey data represents the first signal return at a sounding location and will include suspended solids, known as "fluff", if present. Low frequency (24 kHz) survey data normally penetrates through this "fluff" layer to depict elevations of consolidated bottom material. Low frequency accuracies may vary depending on channel conditions and fathometer settings.

Gage Reading: 0.7 MLLW @ VENICE @ 0840
Sea Conditions: CHOPPY
Vessel Name: BEAUVAIS
Survey Type: CONDITION, SB
Sounding Frequency***: LOW

Feet
0 500 1,000 1,500 2,000 2,500

**Sheet Reference Number
3 of 13**

Revision Number:
410-201-00102