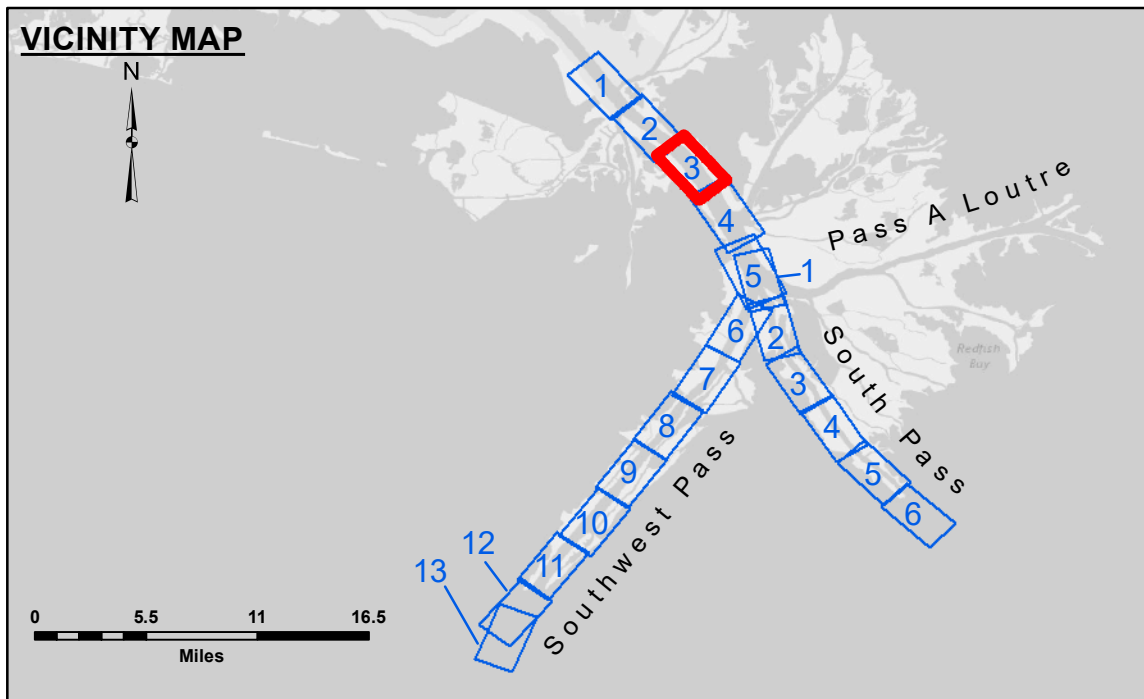


DREDGE NEWPORT
DREDGING STATION 2875+00 TO STATION 2920+00
WEST HALF OF THE CHANNEL



LEGEND			
--- Federal Navigation Channel	○ Cable Area	□ Borrow Area	■ -10' and above
— Federal Navigation Center Line	□ Placement Area	● Shoalest Sounding**	■ -10' to -20'
— As-built Pipeline/Cable	□ Anchorage Area	★ Beacon, General	■ -20' to -30'
..... Unconfirmed Pipeline/Cable	⊗ Obstruction Point	◆ Red Navigation Buoy	■ -30' to -40'
— Project Depth Contour	⚓ Wrecks-Submerged	◆ Green Navigation Buoy	■ -40' to -45'
			■ -45' to -50'
			■ -50' to -55'
			■ -55' and below

Gage Reading: 1.0 MLLW @ VENICE @ 0850
Sea Conditions: CALM
Vessel Name: JOHN BOPP
Survey Type: CONDITION, SB
Sounding Frequency*:** LOW

Vertical Datum:
 Soundings are shown in feet and indicate depths below Mean Lower Low Water (MLLW, 12-16).
 Datum Relationships for gage 01480 as of March 2020:
 0.0' NAVD86, 2009.55 = -0.53' MLLW = 2.97' MLG

Distances on the Mississippi River, above and below Head of Passes are shown at 1 mile intervals.

The location of navigation aids are base on and provided by the U.S. Coast Guard.

2016 Aerial Photography data source: Precision Aerial Reconnaissance, LLC (1998 DOQQ in green)

Reference is N.O.A.A. Navigation Chart No. 11361.

** Shoalest Sounding per Quarter Per Reach.

*** High frequency (200 kHz) survey data represents the first signal return at a sounding location and will include suspended solids, known as "fluff", if present. Low frequency (24 kHz) survey data normally penetrates through this "fluff" layer to depict elevations of consolidated bottom material. Low frequency accuracies may vary depending on channel conditions and fathometer settings.



Access/Restrictions: The United States Government furnishes these data and the recipient accepts and uses them with the express understanding that they are not to be used for any purpose other than that for which they were prepared, and that the recipient shall not be held liable for any damage or injury resulting from the use of these data.

Access/Restrictions: The United States Government furnishes these data and the recipient accepts and uses them with the express understanding that they are not to be used for any purpose other than that for which they were prepared, and that the recipient shall not be held liable for any damage or injury resulting from the use of these data.

Access/Restrictions: The United States Government furnishes these data and the recipient accepts and uses them with the express understanding that they are not to be used for any purpose other than that for which they were prepared, and that the recipient shall not be held liable for any damage or injury resulting from the use of these data.

U.S. ARMY CORPS OF ENGINEERS NEW ORLEANS DISTRICT	
Surveyed By: JUC & RCC	Plotted By: TSS
Submitted:	Checked By: MSK
Recommended:	Checked By:
Approved:	Checked By:

MISSISSIPPI RIVER - B. R. TO GULF
SOUTHWEST PASS - SHEET 3
SW_03_SWP_20210630_CS_PRO
30 June 2021

Sheet Reference Number
3 of 13

Revision Number: 4.1-20191105