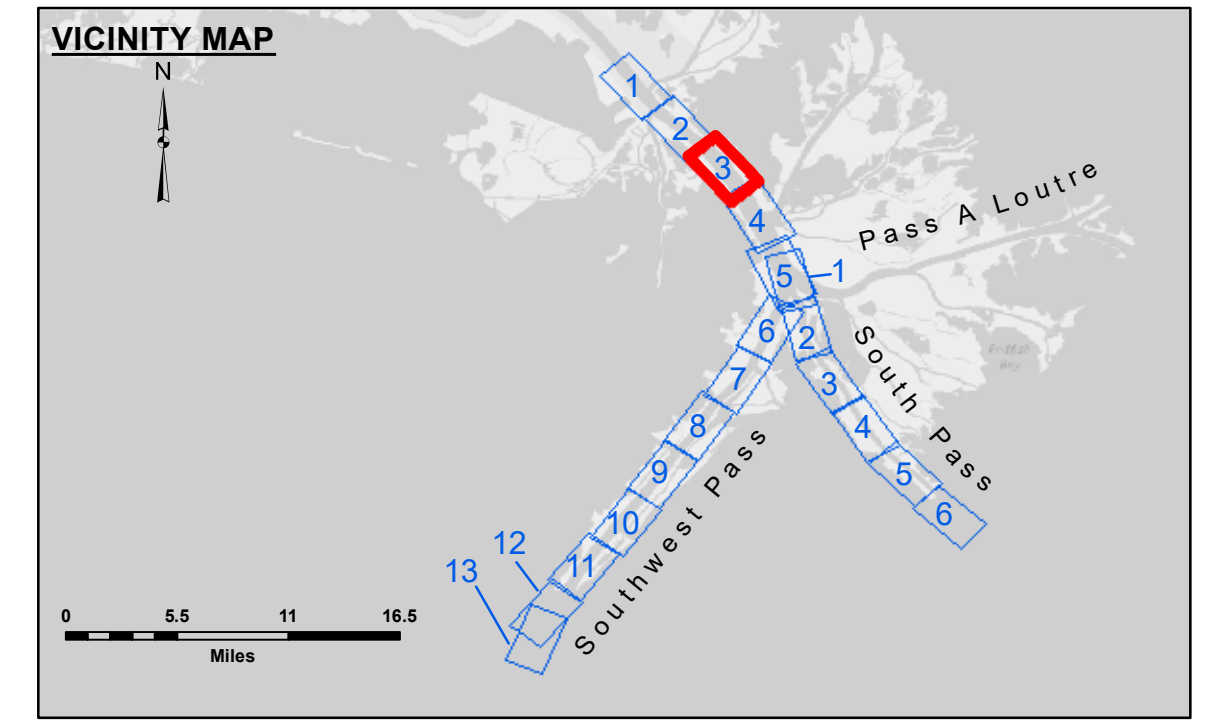


DISCLAIMER: The United States Government furnishes these data and the recipient accepts and uses them with the express understanding that the data are not to be used for any purpose other than that for which they were originally collected, processed, or derived. The user is responsible for the results of any use of the data for other than the intended purpose. The user is responsible for the accuracy, completeness, reliability, usability or suitability for any particular purpose of the data. The user is responsible for the accuracy, completeness, reliability, usability or suitability for any particular purpose of the data. The user is responsible for the accuracy, completeness, reliability, usability or suitability for any particular purpose of the data. The user is responsible for the accuracy, completeness, reliability, usability or suitability for any particular purpose of the data.

| | |
|--|--------------------------|
| U.S. ARMY CORPS OF ENGINEERS NEW ORLEANS DISTRICT | |
| Submitted: | Surveyed By: JH & ROC |
| Recommended: | Plotted By: TSS |
| Approved: | Checked By: MSK |

**MISSISSIPPI RIVER - B. R. TO GULF
SOUTHWEST PASS - SHEET 3
SW_03_SWP_20210831_CS_PRO
31 August 2021**



LEGEND

| | | | |
|----------------------------------|---------------------|-------------------------|------------------|
| --- Federal Navigation Channel | ○ Cable Area | □ Borrow Area | ■ -10' and above |
| — Federal Navigation Center Line | □ Placement Area | ● Shoalest Sounding** | ■ -10' to -20' |
| — As-built Pipeline/Cable | ⊗ Anchorage Area | ★ Beacon, General | ■ -20' to -30' |
| Unconfirmed Pipeline/Cable | ⊗ Obstruction Point | ◆ Red Navigation Buoy | ■ -30' to -40' |
| — Project Depth Contour | ⊗ Wrecks-Submerged | ◆ Green Navigation Buoy | ■ -40' to -45' |
| | | | ■ -45' to -50' |
| | | | ■ -50' to -55' |
| | | | ■ -55' and below |

NOTES:

Horizontal Coordinate System:
North American Datum of 1983 (NAD83), projected to the State Plane Coordinate System (SPCS), Louisiana South Zone. Distance units in U.S. Survey Feet.

Vertical Datum:
Soundings are shown in feet and indicate depths below Mean Lower Low Water (MLLW, 12-16). Datum Relationships for gage 01480 as of March 2020:
0.0' NAVD86, 2009.55 = -0.53' MLLW = 2.97' MLG

Distances on the Mississippi River, above and below Head of Passes are shown at 1 mile intervals.

The location of navigation aids are based on and provided by the U.S. Coast Guard.

2016 Aerial Photography data source: Precision Aerial Reconnaissance, LLC (1998 DOQQ in green)

Reference is N.O.A. Navigation Chart No. 11361.

** Shoalest Sounding per Quarter per Reach.

*** High frequency (200 kHz) survey data represents the first signal return at a sounding location and will include suspended solids, known as "fluff", if present. Low frequency (24 kHz) survey data normally penetrates through this "fluff" layer to depict elevations of consolidated bottom material. Low frequency accuracies may vary depending on channel conditions and fathometer settings.

Gage Reading: 0.5 MLLW @ VENICE @ 1425
Sea Conditions: CALM, FLUFF
Vessel Name: JOHN BOPP
Survey Type: CONDITION, SB
Sounding Frequency***: LOW

Feet
0 500 1,000 1,500 2,000 2,500