

**Access/Conformance:** The United States Government furnishes these data and the recipient accepts and uses them with the express understanding that the data are not to be used for any purpose other than that for which they were originally collected, and that the data are not to be used for any purpose other than that for which they were originally collected.

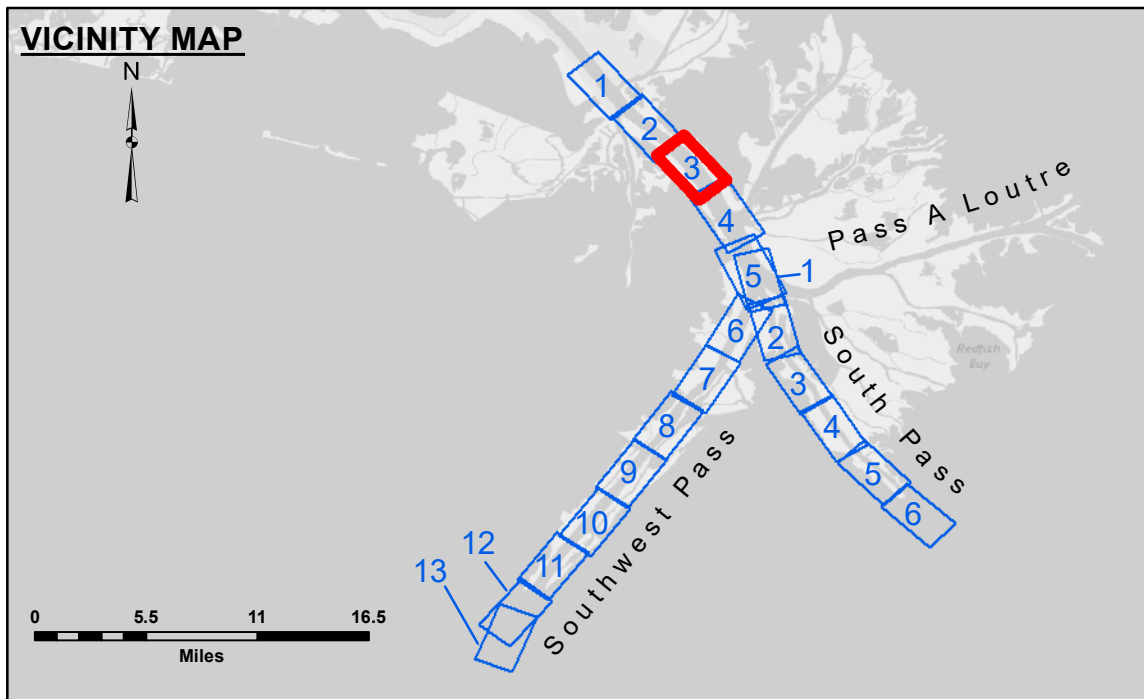
**Accuracy:** The data are accurate to the extent that the data were collected and used for the purpose for which they were collected.

**Disclaimer:** The information depicted on this map represents the results of a survey conducted by the United States Army Corps of Engineers. The information is provided for informational purposes only and does not constitute a warranty or guarantee of any kind. The user is responsible for the accuracy and reliability of the information and for the consequences of its use. The information is provided as is, without any warranty or guarantee of any kind. The user is responsible for the accuracy and reliability of the information and for the consequences of its use.

Submitted:	Surveyed By:
Recommended:	Plotted By:
Approved:	Checked By:

U.S. ARMY CORPS OF ENGINEERS  
NEW ORLEANS DISTRICT

**MISSISSIPPI RIVER - B. R. TO GULF  
SOUTHWEST PASS - SHEET 3  
SW\_03\_SWP\_20220126\_CS\_PRO  
26 January 2022**



LEGEND	
--- Federal Navigation Channel	● Cable Area
— Federal Navigation Center Line	■ Placement Area
— As-built Pipeline/Cable	□ Anchorage Area
..... Unconfirmed Pipeline/Cable	⊗ Obstruction Point
— Project Depth Contour	★ Wrecks-Submerged
□ Borrow Area	★ Beacon, General
● Shoalest Sounding**	◆ Red Navigation Buoy
◆ Green Navigation Buoy	

**NOTES:**

Horizontal Coordinate System:  
North American Datum of 1983 (NAD83), projected to the State Plane Coordinate System (SPCS), Louisiana South Zone. Distance units in U.S. Survey Feet.

Vertical Datum:  
Soundings are shown in feet and indicate depths below Mean Lower Low Water (MLLW, 12-16).  
Datum Relationships for gage 01480 as of March 2020:  
0.0' NAVD83, 2009.55 = -0.53' MLLW = 2.97' MLG

Distances on the Mississippi River, above and below Head of Passes are shown at 1 mile intervals.

The location of navigation aids are base on and provided by the U.S. Coast Guard.

2016 Aerial Photography data source: Precision Aerial Reconnaissance, LLC (1998 DOQQ in green)

Reference is N.O.A.A. Navigation Chart No. 11361.

\*\* Shoalest Sounding per Quarter Per Reach.

\*\*\* High frequency (200 kHz) survey data represents the first signal return at a sounding location and will include suspended solids, known as "fluff", if present. Low frequency (24 kHz) survey data normally penetrates through this "fluff" layer to depict elevations of consolidated bottom material. Low frequency accuracies may vary depending on channel conditions and fathometer settings.

**Sheet Reference Number  
3 of 13**

Revision Number:  
4.2-30204920