

DISTRIBUTION LIABILITY: The data represents the results of data collection/processing for a specific US Army Corps of Engineers project. It is only valid for its intended use, content, time and accuracy specifications. The user is responsible for the results of any use of the data for other than its intended purpose.

DATA CONSTRAINTS: Hydrographic survey data is subject to change and may not represent the current conditions. The user is responsible for the results of any use of the data for other than its intended purpose.

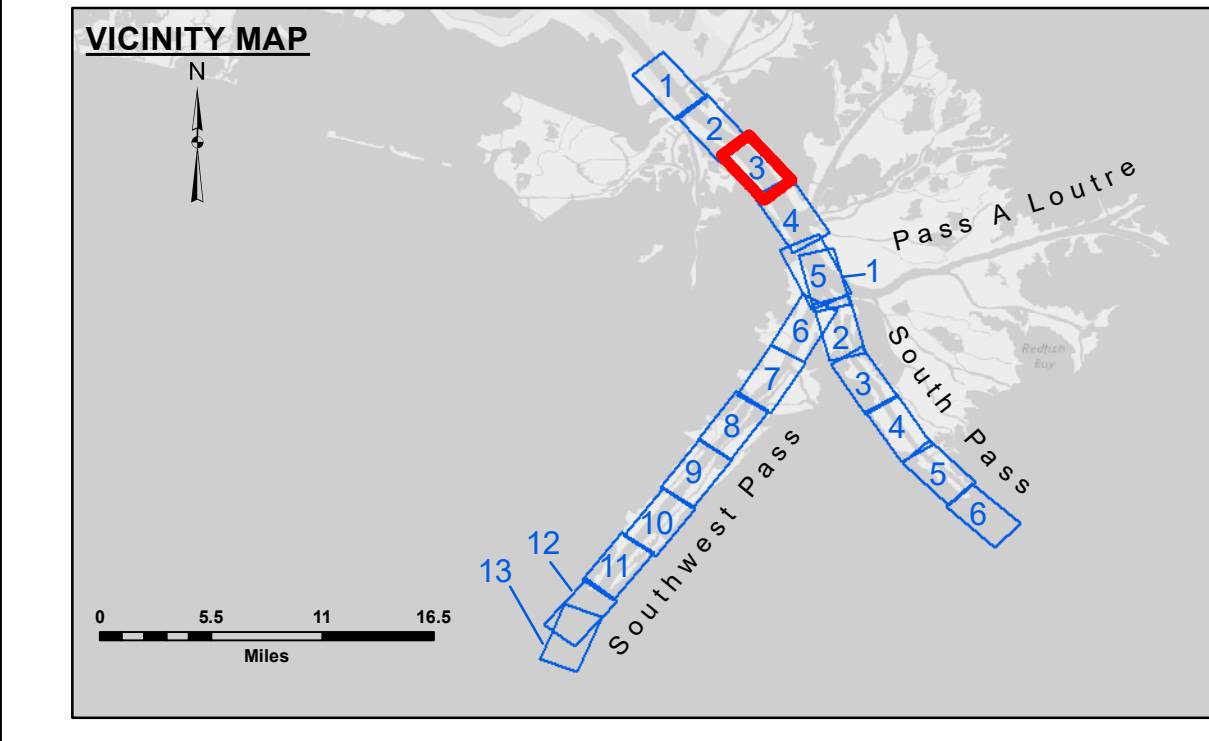
DISCLAIMER: The United States Government furnishes this data and the recipient accepts and uses them with the express understanding that the data is provided for informational purposes only and is not to be used for any purpose other than that for which it was provided. The recipient may not transfer, reproduce, or disseminate this data to anyone other than Government personnel. The recipient may not transfer this data to others without obtaining the permission of the donor. The information depicted on this map represents the results of a survey and is not to be used for any purpose other than that for which it was provided. The recipient may not transfer this data to others without obtaining the permission of the donor.

U.S. ARMY CORPS OF ENGINEERS NEW ORLEANS DISTRICT	
Submitted:	Surveyed By: JH & ROC
Recommended:	Plotted By: LLB
Checked:	Checked By: MSK
Approved:	

**MISSISSIPPI RIVER - B.R. TO GULF
SOUTHWEST PASS - SHEET 3
SW_03_SWP_20230309_CS_PRO
09 March 2023**

**Sheet Reference Number
3 of 13**

Revision Number:
4-2-2024(4/2)



LEGEND	
--- Federal Navigation Channel	● Cable Area
— Federal Navigation Center Line	■ Placement Area
— As-built Pipeline/Cable	□ Anchorage Area
..... Unconfirmed Pipeline/Cable	⊗ Obstruction Point
— Project Depth Contour	★ Wrecks-Submerged
□ Borrow Area	★ Beacon, General
● Shoalest Sounding**	◆ Red Navigation Buoy
★ Beacon, General	◆ Green Navigation Buoy

NOTES:

Horizontal Coordinate System:
North American Datum of 1983 (NAD83), projected to the State Plane Coordinate System (SPCS), Louisiana South Zone. Distance units in U.S. Survey Feet.

Vertical Datum:
Soundings are shown in feet and indicate depths below Mean Lower Low Water (MLLW, 12-16). Datum Relationships for gage 01480 as of March 2020:
0.0' NAVD83, 2009.55 = -0.53' MLLW = 2.97' MLG

Distances on the Mississippi River, above and below Head of Passes are shown at 1 mile intervals.

The location of navigation aids are base on and provided by the U.S. Coast Guard.

2022 Aerial Photography data source: Optimal GEO (1998 DOQQ in green)

Reference is N.O.A. Navigation Chart No. 11361.

** Shoalest Sounding per Quarter Per Reach.

*** High frequency (200 kHz) survey data represents the first signal return at a sounding location and will include suspended solids, known as "fluff", if present. Low frequency (24 kHz) survey data normally penetrates through this "fluff" layer to depict elevations of consolidated bottom material. Low frequency accuracies may vary depending on channel conditions and fathometer settings.

Gage Reading: 1.0 MLLW @ VENICE @ 1100
Sea Conditions: CALM
Vessel Name: TOBIN
Survey Type: CONDITION, SB
Sounding Frequency***: LOW

Feet
0 500 1,000 1,500 2,000 2,500