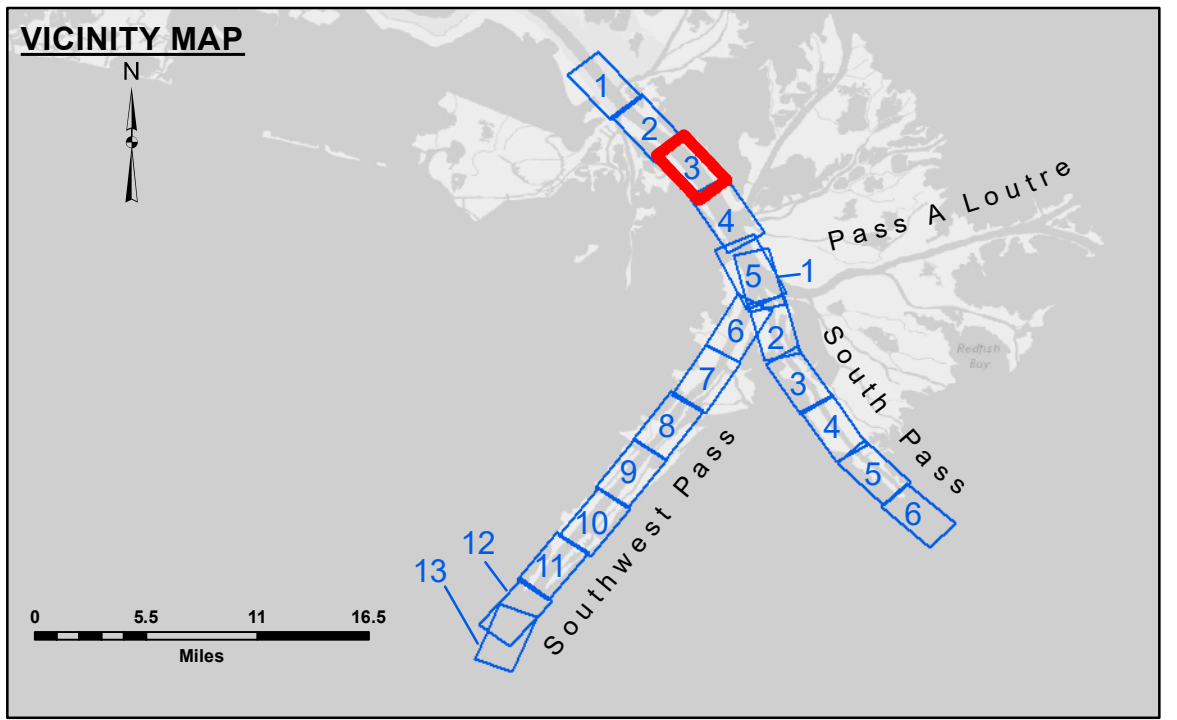


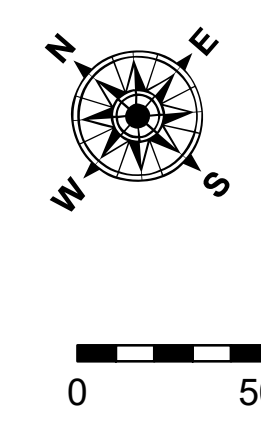
DISTRICT: The United States Government furnishes these data and the recipient accepts and uses them with the express understanding that the data are not to be used for any purpose other than that for which they were originally collected, expressed, or implied concerning the accuracy, completeness, reliability, usability or suitability for any particular purpose of the recipient. The user is responsible for the results of any use of the data under no liability whatsoever to any person by reason of any use of the data. The recipient agrees not to release these data to anyone other than Government personnel. The recipient may not transfer these data to others without also transferring the Disclaimer. The information depicted on this map represents the results of a survey conducted by the United States Army Corps of Engineers and is not to be considered a representation of the general condition existing at that time.

Submitted:	Surveyed By: JUC & RCC
Recommended: Chief, Survey Section	Plotted By: TSS
Approved: Chief, Waterways Maintenance Section	Checked By: MSK

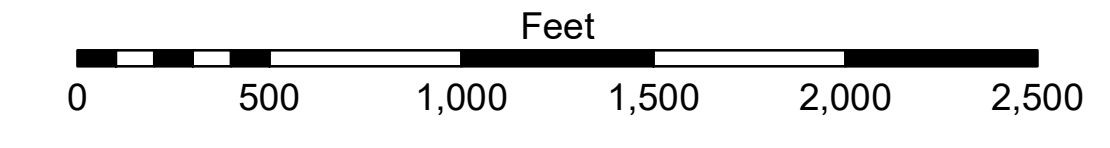
**MISSISSIPPI RIVER - B. R. TO GULF
SOUTHWEST PASS - SHEET 3
SW_03_SWP_20230426_CS_PRO
26 April 2023**



LEGEND	
--- Federal Navigation Channel	● Cable Area
— Federal Navigation Center Line	■ Placement Area
— As-built Pipeline/Cable	□ Anchorage Area
..... Unconfirmed Pipeline/Cable	⊗ Obstruction Point
— Project Depth Contour	★ Wrecks-Submerged
□ Borrow Area	★ Beacon, General
● Shoalest Sounding**	◆ Red Navigation Buoy
★ Beacon, General	◆ Green Navigation Buoy
◆ Red Navigation Buoy	■ -10' and above
◆ Green Navigation Buoy	■ -10' to -20'
	■ -20' to -30'
	■ -30' to -40'
	■ -40' to -45'
	■ -45' to -50'
	■ -50' to -55'
	■ -55' and below



Gage Reading: 1.6 MLLW @ VENICE @ 1145
 Sea Conditions: CALM
 Vessel Name: TOBIN
 Survey Type: CONDITION, SB
 Sounding Frequency***: LOW



NOTES:
 Horizontal Coordinate System: North American Datum of 1983 (NAD83), projected to the State Plane Coordinate System (SPCS), Louisiana South Zone. Distance units in U.S. Survey Feet.
 Vertical Datum: Soundings are shown in feet and indicate depths below Mean Lower Low Water (MLLW, 12-16). Datum Relationships for gage 01480 as of March 2020: 0.0' NAVD86, 2009.55 = -0.53' MLLW = 2.97' MLG
 Distances on the Mississippi River, above and below Head of Passes are shown at 1 mile intervals.
 The location of navigation aids are base on and provided by the U.S. Coast Guard.
 2022 Aerial Photography data source: Optimal GEO (1998 DOQQ in green)
 Reference is N.O.A. Navigation Chart No. 11361.
 ** Shoalest Sounding per Quarter Per Reach.
 *** High frequency (200 kHz) survey data represents the first signal return at a sounding location and will include suspended solids, known as "fluff", if present. Low frequency (24 kHz) survey data normally penetrates through this "fluff" layer to depict elevations of consolidated bottom material. Low frequency accuracies may vary depending on channel conditions and fathometer settings.

**Sheet Reference Number
3 of 13**

Revision Number: 4.2-3020420