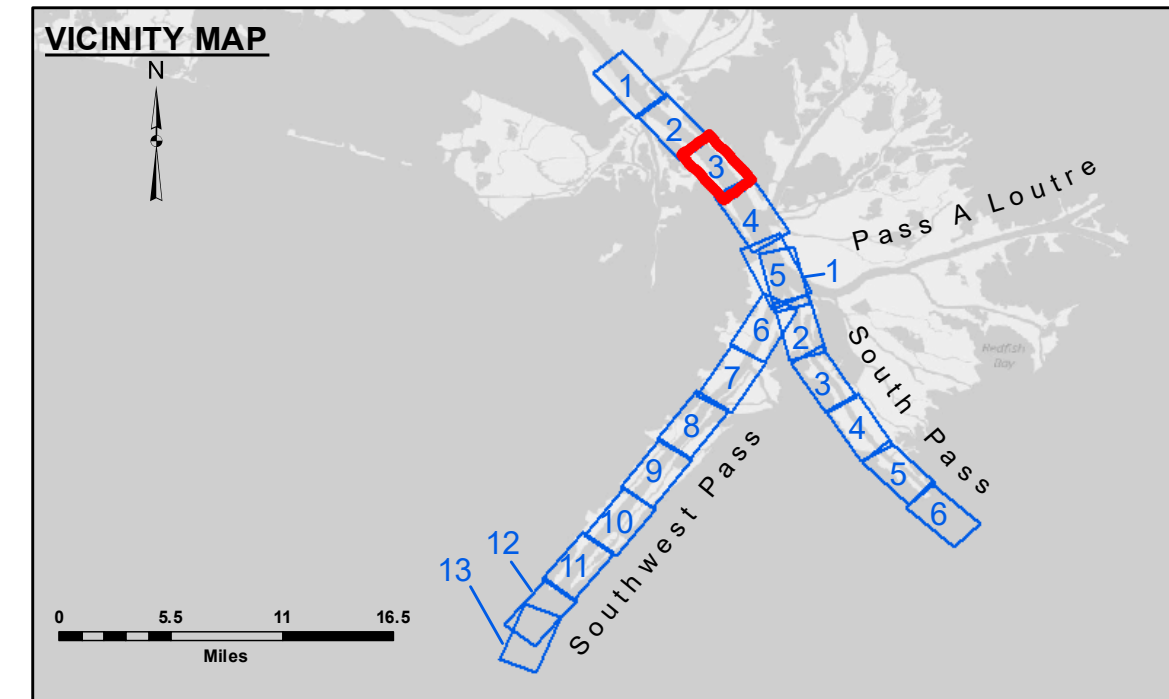


DREDGE GLENN EDWARDS
DREDGING STATION 2825+00 TO STATION 2925+00
FULL CHANNEL WIDTH SHEETS 3 & 4



LEGEND

--- Federal Navigation Channel	● Cable Area	□ Borrow Area	■ -10' and above
— Federal Navigation Center Line	□ Placement Area	● Shoalest Sounding**	■ -10' to -20'
— As-built Pipeline/Cable	□ Anchorage Area	★ Beacon, General	■ -20' to -30'
..... Unconfirmed Pipeline/Cable	⊗ Obstruction Point	◆ Red Navigation Buoy	■ -30' to -40'
— Project Depth Contour	⚓ Wrecks-Submerged	◆ Green Navigation Buoy	■ -40' to -45'
			■ -45' to -50'
			■ -50' to -55'
			■ -55' and below

NOTES:

Horizontal Coordinate System:
North American Datum of 1983 (NAD83), projected to the State Plane Coordinate System (SPCS), Louisiana South Zone. Distance units in U.S. Survey Feet.

Vertical Datum:
Soundings are shown in feet and indicate depths below Mean Lower Low Water (MLLW, 12-16). Datum Relationships for gage 01480 as of March 2020:
0.0' NAVD83, 2009.55 = -0.53' MLLW = 2.97' MLG

Distances on the Mississippi River, above and below Head of Passes are shown at 1 mile intervals.

The location of navigation aids are base on and provided by the U.S. Coast Guard.

2022 Aerial Photography data source: Optimal GEO (1998 DOQQ in green)

Reference is N.O.A. Navigation Chart No. 11361.

** Shoalest Sounding per Quarter per Reach.

*** High frequency (200 kHz) survey data represents the first signal return at a sounding location and will include suspended solids, known as "fluff", if present. Low frequency (24 kHz) survey data normally penetrates through this "fluff" layer to depict elevations of consolidated bottom material. Low frequency accuracies may vary depending on channel conditions and fathometer settings.

Gage Reading: 1.6 MLLW @ VENICE @ 0815
Sea Conditions: CALM
Vessel Name: BLANCHARD
Survey Type: CONDITION, SB
Sounding Frequency***: LOW

Feet
0 500 1,000 1,500 2,000 2,500



DISTRIBUTION LIABILITY: The data represents the results of data collection/processing for a specific US Army Corps of Engineers project. It is only valid for its intended use, content, time and accuracy specifications. The user is responsible for the results of their use. Application of the data for other than its intended purpose is prohibited.

DATA: Constants: Hydrographic survey data is subject to change rapidly due to several factors including but not limited to dredging operations. These data are being used in the design of the project. The user is responsible for the results of their use. The user is not responsible for changes in the hydrographic conditions which develop after the date of the survey. Prudent mariners should not rely solely upon it.

U.S. ARMY CORPS OF ENGINEERS
NEW ORLEANS DISTRICT

Submitted:	Surveyed By: JTB & DBD
Recommended:	Plotted By: TSS
Checked By: MSK	Checked By: MSK

MISSISSIPPI RIVER - B.R. TO GULF
SOUTHWEST PASS - SHEET 3
SW_03_SWP_20230525_CS
25 May 2023

Sheet Reference Number
3 of 13

Revision Number:
4.2-2023(04/20)