

DREDGE GLENN EDWARDS
DREDGING EAST HALF CHANNEL
STA. 2795+00 TO STA. 2920+00

WEST BAY,
ED-SS (0.0'
NAVD)

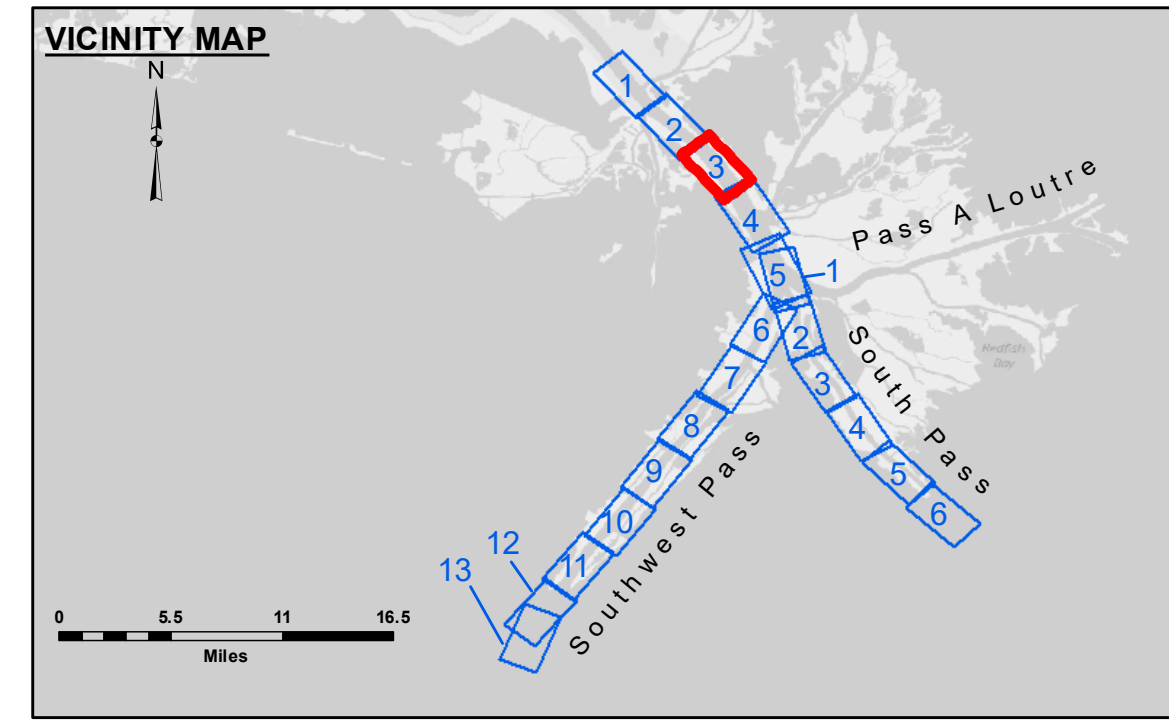
SPENCES '6A' (6.7)

10" TEACOC GAS PIP (ASBUILT)

2" ASPECTRA ENERGY GAS PIP (ASBUILT)

3,925,000
278,000
3,922,000

3,925,000
3,924,000
266,000
3,924,000
266,000
3,924,000



LEGEND

--- Federal Navigation Channel	● Cable Area	□ Borrow Area	■ -10' and above
— Federal Navigation Center Line	□ Placement Area	● Shoalest Sounding**	■ -10' to -20'
— As-built Pipeline/Cable	□ Anchorage Area	★ Beacon, General	■ -20' to -30'
..... Unconfirmed Pipeline/Cable	⊗ Obstruction Point	◆ Red Navigation Buoy	■ -30' to -40'
— Project Depth Contour	⚓ Wrecks-Submerged	◆ Green Navigation Buoy	■ -40' to -45'
			■ -45' to -50'
			■ -50' to -55'
			■ -55' and below

NOTES:

Horizontal Coordinate System:
North American Datum of 1983 (NAD83), projected to the State Plane Coordinate System (SPCS), Louisiana South Zone. Distance units in U.S. Survey Feet.

Vertical Datum:
Soundings are shown in feet and indicate depths below Mean Lower Low Water (MLLW, 12-16). Datum Relationships for gage 01480 as of March 2020:
0.0' NAVD83, 2009.55 = -0.53' MLLW = 2.97' MLG

Distances on the Mississippi River, above and below Head of Passes are shown at 1 mile intervals.

The location of navigation aids are base on and provided by the U.S. Coast Guard.

2022 Aerial Photography data source: Optimal GEO (1998 DOQQ in green)

Reference is N.O.A. Navigation Chart No. 11361.

** Shoalest Sounding per Quarter per Reach.

*** High frequency (200 kHz) survey data represents the first signal return at a sounding location and will include suspended solids, known as "fluff", if present. Low frequency (24 kHz) survey data normally penetrates through this "fluff" layer to depict elevations of consolidated bottom material. Low frequency accuracies may vary depending on channel conditions and fathometer settings.

Gage Reading: 1.7 MLLW @ VENICE @ 0820
Sea Conditions: CALM
Vessel Name: TOBIN
Survey Type: CONDITION, SB
Sounding Frequency***: LOW

Feet
0 500 1,000 1,500 2,000 2,500



DISTRIBUTION LIABILITY: The data represents the results of data collection/processing for a specific US Army Corps of Engineers project. It is only valid for its intended use, content, time and accuracy specifications. The user is responsible for the results of their use. Application of the data for other than its intended purpose. Data Constants: Hydrographic survey data is subject to change rapidly due to several factors including but not limited to dredging operations. These data are being used in the design of the project. The user is responsible for the results of their use. The information depicted on the map represents the results of a survey conducted on the date shown. It is not intended to represent the general condition existing at that time.

U.S. ARMY CORPS OF ENGINEERS
NEW ORLEANS DISTRICT

Submitted:	Surveyed By: JH & RCC
Recommended:	Plotted By: RSL
Approved:	Checked By: MSK

MISSISSIPPI RIVER - B.R. TO GULF
SOUTHWEST PASS - SHEET 3
SW_03_SWP_20230828_CS
28 August 2023

Sheet Reference Number
3 of 13

Revision Number:
4.2-20230828