

**Distribution Liability:** The data represents the results of data collection/processing for a specific US Army Corps of Engineers project. It is only valid for the intended use, content, time and accuracy specifications. The user is responsible for the results and accuracy of the data. Application of the data for other than the intended purpose is not warranted.

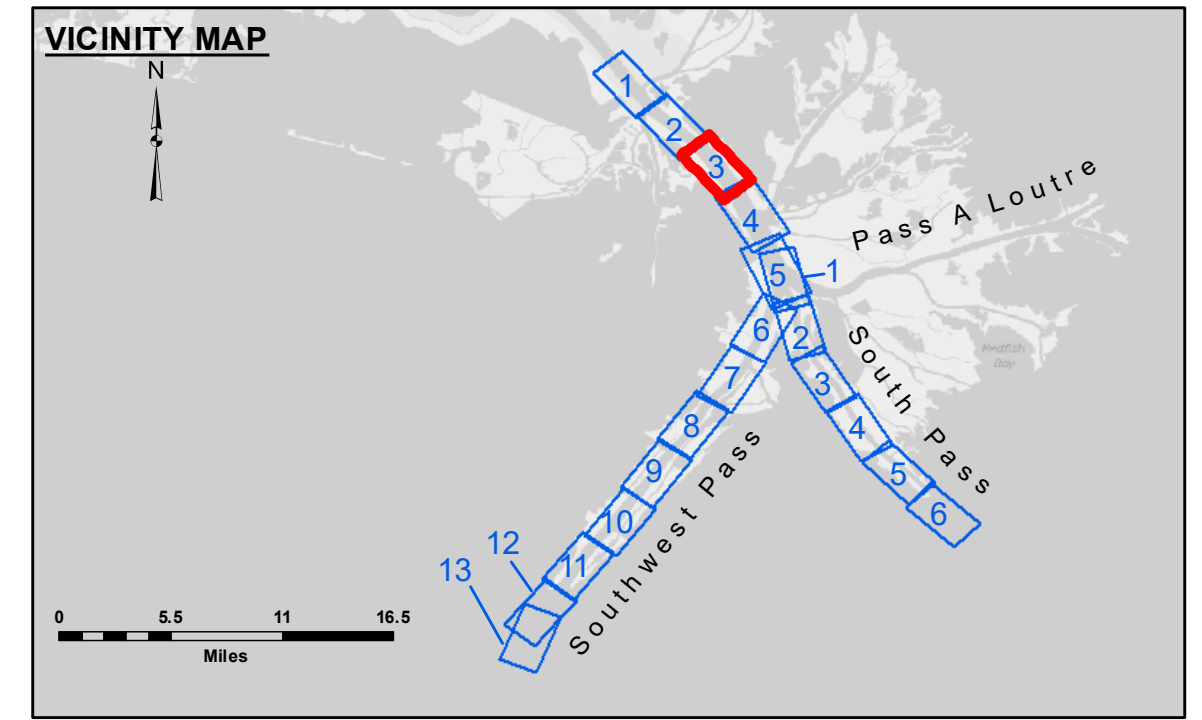
**Data:** Constants: Hydrographic survey data is subject to change rapidly due to several factors including but not limited to dredging operations, sedimentation, and changes in the bathymetry of the waterway. The user is responsible for the accuracy of the data. The information depicted on the map represents the results of a hydrographic survey conducted on the date of the survey. The information is not to be used for navigation purposes. Prudent mariners should not rely solely on this information.

Submitted:	Surveyed By: JTB & DBD
Recommended:	Plotted By: RSL
Approved:	Checked By: MSK

U.S. ARMY CORPS OF ENGINEERS  
NEW ORLEANS DISTRICT

**MISSISSIPPI RIVER - B.R. TO GULF  
SOUTHWEST PASS - SHEET 3  
SW\_03\_SWP\_20231211\_CS\_B2B**

**11 December 2023**



**LEGEND**

- Federal Navigation Channel
- Federal Navigation Center Line
- As-built Pipeline/Cable
- ..... Unconfirmed Pipeline/Cable
- Project Depth Contour
- Cable Area
- Placement Area
- Anchorage Area
- ⊗ Obstruction Point
- ★ Wrecks-Submerged
- Borrow Area
- Shoalest Sounding\*\*
- ★ Beacon, General
- ◆ Red Navigation Buoy
- ◆ Green Navigation Buoy
- -10' and above
- -10' to -20'
- -20' to -30'
- -30' to -40'
- -40' to -45'
- -45' to -50'
- -50' to -55'
- -55' and below

**NOTES:**

Horizontal Coordinate System:  
North American Datum of 1983 (NAD83), projected to the State Plane Coordinate System (SPCS), Louisiana South Zone. Distance units in U.S. Survey Feet.

Vertical Datum:  
Soundings are shown in feet and indicate depths below Mean Lower Low Water (MLLW, 12-16). Datum Relationships for gage 01480 as of March 2020:  
0.0' NAVD83, 2009.55 = -0.53' MLLW = 2.97' MLG

Distances on the Mississippi River, above and below Head of Passes are shown at 1 mile intervals.

The location of navigation aids are based on and provided by the U.S. Coast Guard.

2022 Aerial Photography data source: Optimal GEO (1998 DOQQ in green)

Reference is N.O.A. Navigation Chart No. 11361.

\*\* Shoalest Sounding per Quarter per Reach.

\*\*\* High frequency (200 kHz) survey data represents the first signal return at a sounding location and will include suspended solids, known as "fluff", if present. Low frequency (24 kHz) survey data normally penetrates through this "fluff" layer to depict elevations of consolidated bottom material. Low frequency accuracies may vary depending on channel conditions and fathometer settings.

Gage Reading: 1.3 MLLW @ VENICE @ 0820  
Sea Conditions: CALM  
Vessel Name: BLANCHARD  
Survey Type: CONDITION, SB  
Sounding Frequency\*\*\*: LOW

Feet  
0 500 1,000 1,500 2,000 2,500