

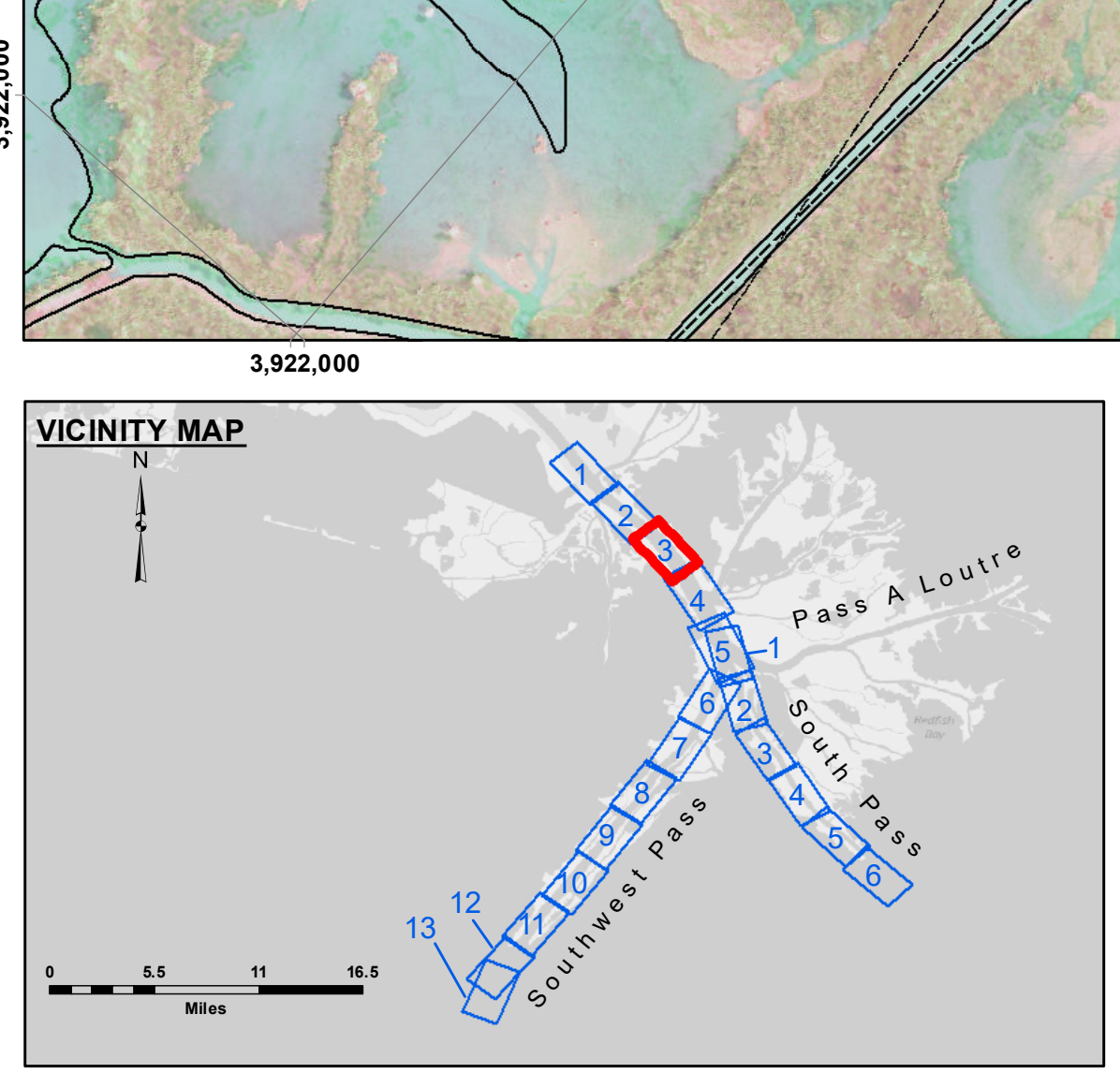
Access: The United States Government furnishes this data and the recipient accepts and uses them with the express understanding that the data are not to be used for any purpose other than that for which they were originally collected, and that the data are not to be distributed or used in any way that would reflect unfavorably on the United States Government or its personnel.

Disclaimer: The data are not to be used for any purpose other than that for which they were originally collected, and that the data are not to be distributed or used in any way that would reflect unfavorably on the United States Government or its personnel.

Access: The United States Government furnishes this data and the recipient accepts and uses them with the express understanding that the data are not to be used for any purpose other than that for which they were originally collected, and that the data are not to be distributed or used in any way that would reflect unfavorably on the United States Government or its personnel.

Disclaimer: The data are not to be used for any purpose other than that for which they were originally collected, and that the data are not to be distributed or used in any way that would reflect unfavorably on the United States Government or its personnel.

U.S. ARMY CORPS OF ENGINEERS NEW ORLEANS DISTRICT	
Submitted:	Surveyed By: JTB & DBD
Recommended:	Plotted By: RSL
Checked By: MSK	Checked By: MSK
Approved:	Checked By: MSK



LEGEND	
--- Federal Navigation Channel	••• Cable Area
— Federal Navigation Center Line	□ Placement Area
— As-built Pipeline/Cable	□ Anchorage Area
..... Unconfirmed Pipeline/Cable	⊗ Obstruction Point
— Project Depth Contour	⊙ Wrecks-Submerged
□ Borrow Area	★ Beacon, General
● Shoalest Sounding**	◆ Red Navigation Buoy
★ Beacon, General	◆ Green Navigation Buoy
◆ Red Navigation Buoy	
◆ Green Navigation Buoy	

Gage Reading:	-0.1 MLLW @ VENICE @ 0915
Sea Conditions:	CALM
Vessel Name:	BLANCHARD
Survey Type:	CONDITION, SB
Sounding Frequency***:	LOW

NOTES:

Horizontal Coordinate System:
North American Datum of 1983 (NAD83), projected to the State Plane Coordinate System (SPCS), Louisiana South Zone. Distance units in U.S. Survey Feet.

Vertical Datum:
Soundings are shown in feet and indicate depths below Mean Lower Low Water (MLLW, 12-16). Datum Relationships for gage 01480 as of March 2020:
0.0' NAVD83, 2009.55' = -0.53' MLLW = 2.97' MLG

Distances on the Mississippi River, above and below Head of Passes are shown at 1 mile intervals.

The location of navigation aids are base on and provided by the U.S. Coast Guard.

2022 Aerial Photography data source: Optimal GEO (1998 DOQQ in green)

Reference is N.O.A. Navigation Chart No. 11361.

** Shoalest Sounding per Quarter per Reach.

*** High frequency (200 kHz) survey data represents the first signal return at a sounding location and will include suspended solids, known as "fluff", if present. Low frequency (24 kHz) survey data normally penetrates through this "fluff" layer to depict elevations of consolidated bottom material. Low frequency accuracies may vary depending on channel conditions and fathometer settings.

**MISSISSIPPI RIVER - B.R. TO GULF
SOUTHWEST PASS - SHEET 3
SW_03_SWP_20240220_CS
20 February 2024**

**Sheet
Reference
Number
3 of 13**

Revision Number:
4.2-20240420