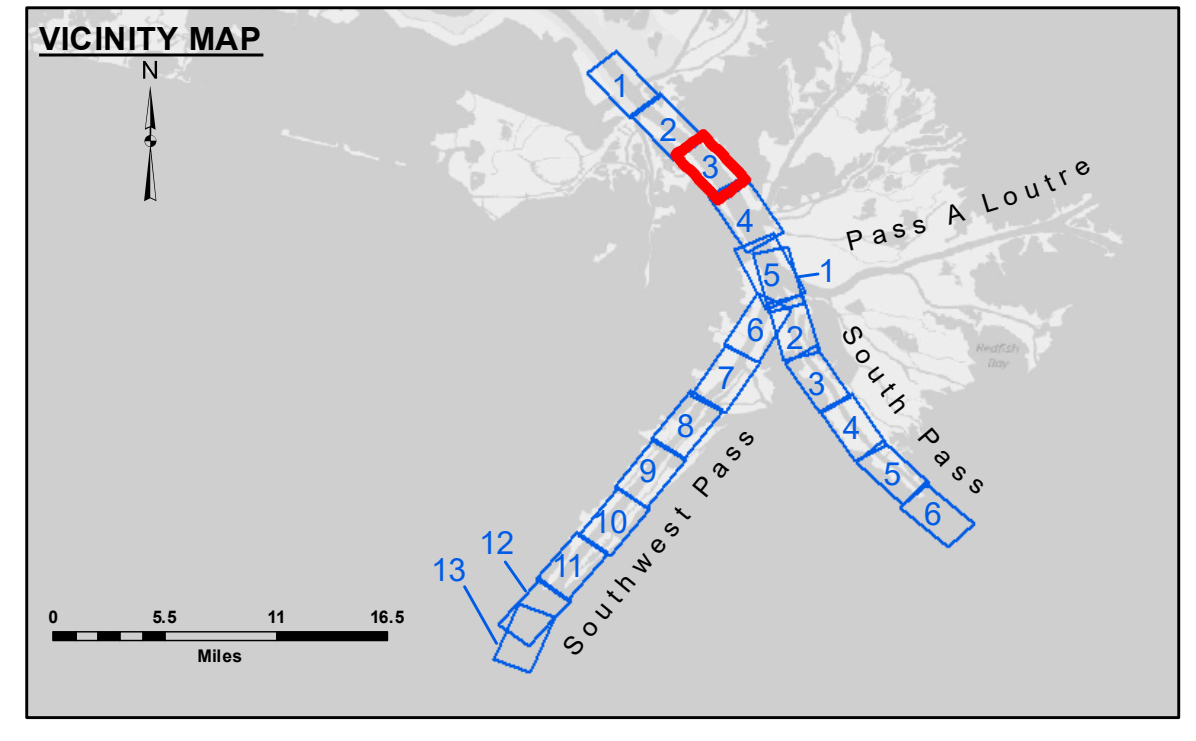


Distribution Liability: The data represents the results of data collection/processing for a specific US Army Corps of Engineers project. It is only valid for its intended use, content, time and accuracy specifications. The user is responsible for the results of any use of this data for purposes other than those intended for its purpose. Data Constants: Hydrographic survey data is subject to change rapidly due to several factors including but not limited to dredging operations, channel migration, and other factors. The user is responsible for the hydrographical conditions which develop after the date of the information depicted on the map represents the results of a survey. The information depicted on the map represents the results of a survey. The information depicted on the map represents the results of a survey. The information depicted on the map represents the results of a survey.

Submitted:	Surveyed By:
Recommended:	JTB & DBD
Checked By:	Plotted By:
MSK	RSL
Checked By:	MSK

**MISSISSIPPI RIVER - B.R. TO GULF
SOUTHWEST PASS - SHEET 3
SW_03_SWP_20240507_CS
07 May 2024**



LEGEND

--- Federal Navigation Channel	● Cable Area	□ Borrow Area	■ -10' and above
— Federal Navigation Center Line	□ Placement Area	● Shoalest Sounding**	■ -10' to -20'
— As-built Pipeline/Cable	□ Anchorage Area	★ Beacon, General	■ -20' to -30'
..... Unconfirmed Pipeline/Cable	⊗ Obstruction Point	◆ Red Navigation Buoy	■ -30' to -40'
— Project Depth Contour	⚓ Wrecks-Submerged	◆ Green Navigation Buoy	■ -40' to -45'
			■ -45' to -50'
			■ -50' to -55'
			■ -55' and below

Gage Reading: 1.5 MLLW @ VENICE (01480) @ 0810
Sea Conditions: CALM
Vessel Name: BLANCHARD
Survey Type: CONDITION, SB
Sounding Frequency*:** LOW

Vertical Datum: North American Datum of 1983 (NAD83), projected to the State Plane Coordinate System (SPCS), Louisiana South Zone. Distance units in U.S. Survey Feet.
Datum Relationships for gage 01480 as of March 2020:
 0.0' NAVD83, 2009.55 = -0.53' MLLW = 2.97' MLG

Distances on the Mississippi River, above and below Head of Passes are shown at 1 mile intervals.

The location of navigation aids are base on and provided by the U.S. Coast Guard.

2022 Aerial Photography data source: Optimal GEO (1998 DOQQ in green)

Reference is N.O.A. Navigation Chart No. 11361.

** Shoalest Sounding per Quarter per Reach.

*** High frequency (200 kHz) survey data represents the first signal return at a sounding location and will include suspended solids, known as "fluff", if present. Low frequency (24 kHz) survey data normally penetrates through this "fluff" layer to depict elevations of consolidated bottom material. Low frequency accuracies may vary depending on channel conditions and fathometer settings.

**Sheet Reference Number
3 of 13**

Revision Number:
4.2-20240420